



## Dalyell Road, SW9

£425,000

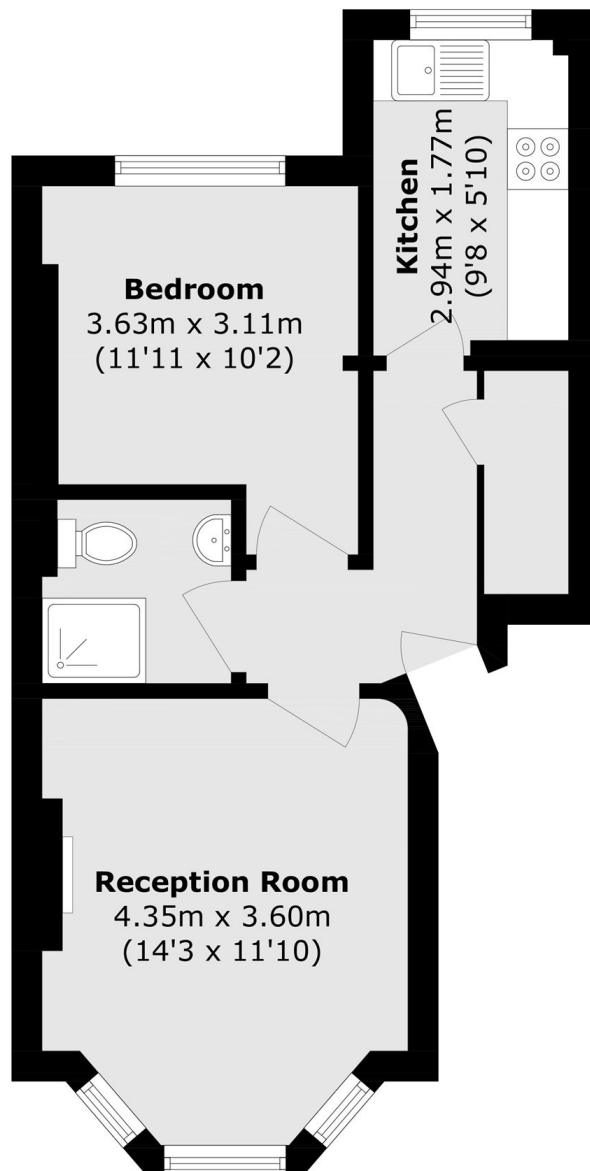
A charming one-bedroom Victorian apartment set on a desirable tree-lined street within the popular Brixton, Stockwell and Clapham triangle. The property combines period character with modern comforts, creating a bright and welcoming home ideal for a range of buyers.

Located on the sought-after Dalyell Road, the apartment enjoys a quiet residential setting with minimal through traffic, while being within easy reach of Brixton, Clapham and Stockwell. Brixton Station (Victoria Line), Clapham High Street (Northern Line and Overground) and Stockwell Station (Northern and Victoria Lines) are all nearby, along with the cafés, restaurants and amenities of Brixton Village, Clapham Old Town and Abbeville Village. The green spaces of Brockwell Park, Slade Gardens and Clapham Common are also within easy reach.

### Features

- Chain Free
- Raised Ground Floor
- One Double Bedroom

# Dalyell Road, London, SW9



Total area (approx.): 41.7 sq. m (448.9 sq. ft)