



174 St. Georges Drive, Watford
£725,000





174 St. Georges Drive

Watford, Watford



This beautifully presented four double bedroom semi-detached bungalow is offered to the market with no upper chain and showcases exceptional standards throughout following a comprehensive refurbishment. The property has been thoughtfully extended to the rear, creating an impressive open plan living and dining area that is flooded with natural light, providing a welcoming space for both relaxing and entertaining accompanied with bi-folding doors leading to the well maintained garden. The modern kitchen is finished to a high specification, featuring integrated appliances and ample storage, making it both stylish and practical for family life.

The ground floor boasts three generously sized double bedrooms, each with neutral décor and plush carpeting, while the principal bedroom is situated in the recently converted loft and benefits from a private ensuite shower room, creating a tranquil retreat. In addition to the principal ensuite, there is a second ensuite shower room serving one of the ground floor bedrooms, as well as a spacious family bathroom with contemporary fittings and a sleek finish.

The property's layout is both versatile and functional, catering perfectly to the needs of growing families or those seeking flexible living arrangements. High quality materials and finishes have been used throughout, ensuring the home is move-in ready and in exceptional condition.

Further benefits include off street parking to the front, double glazing, and gas central heating for year-round comfort. With its combination of contemporary design, generous proportions, and practical features, this exceptional bungalow is sure to impress upon viewing. Early inspection is highly recommended to fully appreciate all that this superb home has to offer.

Council Tax band: D





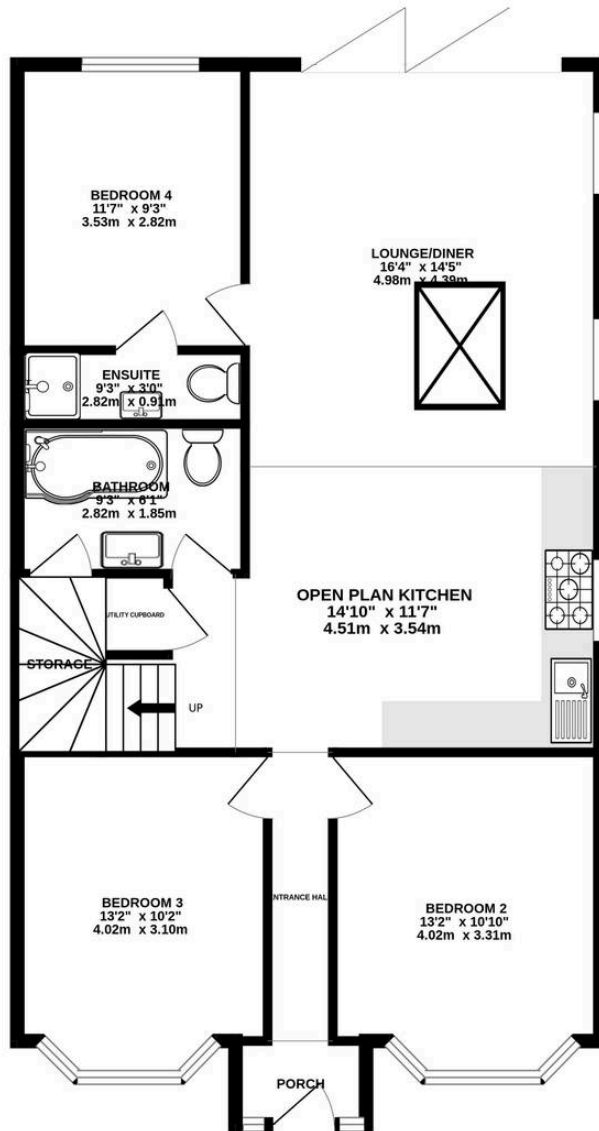




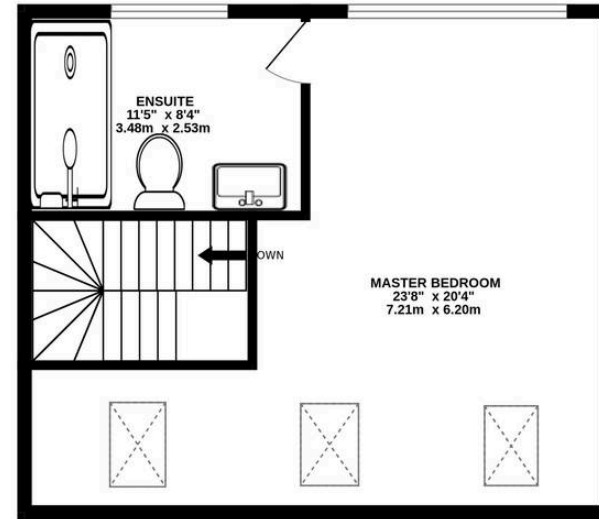




GROUND FLOOR
973 sq.ft. (90.4 sq.m.) approx.



1ST FLOOR
481 sq.ft. (44.7 sq.m.) approx.



TOTAL FLOOR AREA : 1455 sq.ft. (135.1 sq.m.) approx.

Whilst every attempt has been made to ensure the accuracy of the floorplan contained here, measurements of doors, windows, rooms and any other items are approximate and no responsibility is taken for any error, omission or mis-statement. This plan is for illustrative purposes only and should be used as such by any prospective purchaser. The services, systems and appliances shown have not been tested and no guarantee as to their operability or efficiency can be given.
Made with Metropix ©2026

