



## George Street, W1U

£3,999 Per calendar month

This well-proportioned apartment is on the second floor of a modern building (with lift), with two bedrooms, bathroom and separate WC, fitted kitchen and a large living room.

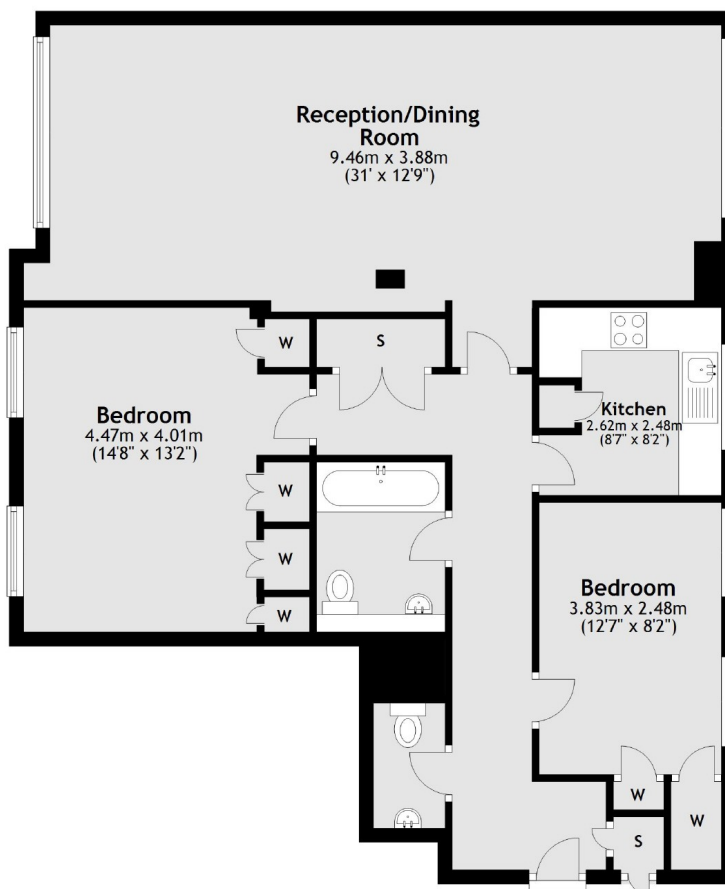
George Street is served by the vibrant shops, bars and restaurants of Marylebone High Street including and moments from the popular Chiltern Firehouse.

### Features

Second Floor  
Lift  
Two Bedrooms  
Bathroom & WC  
Unfurnished  
The Portman Estate

# George Street, London, W1U

## Second Floor



Total area: approx. 97.5 sq. metres (1049.1 sq. feet)