



Garter Way, SE16

£385,000

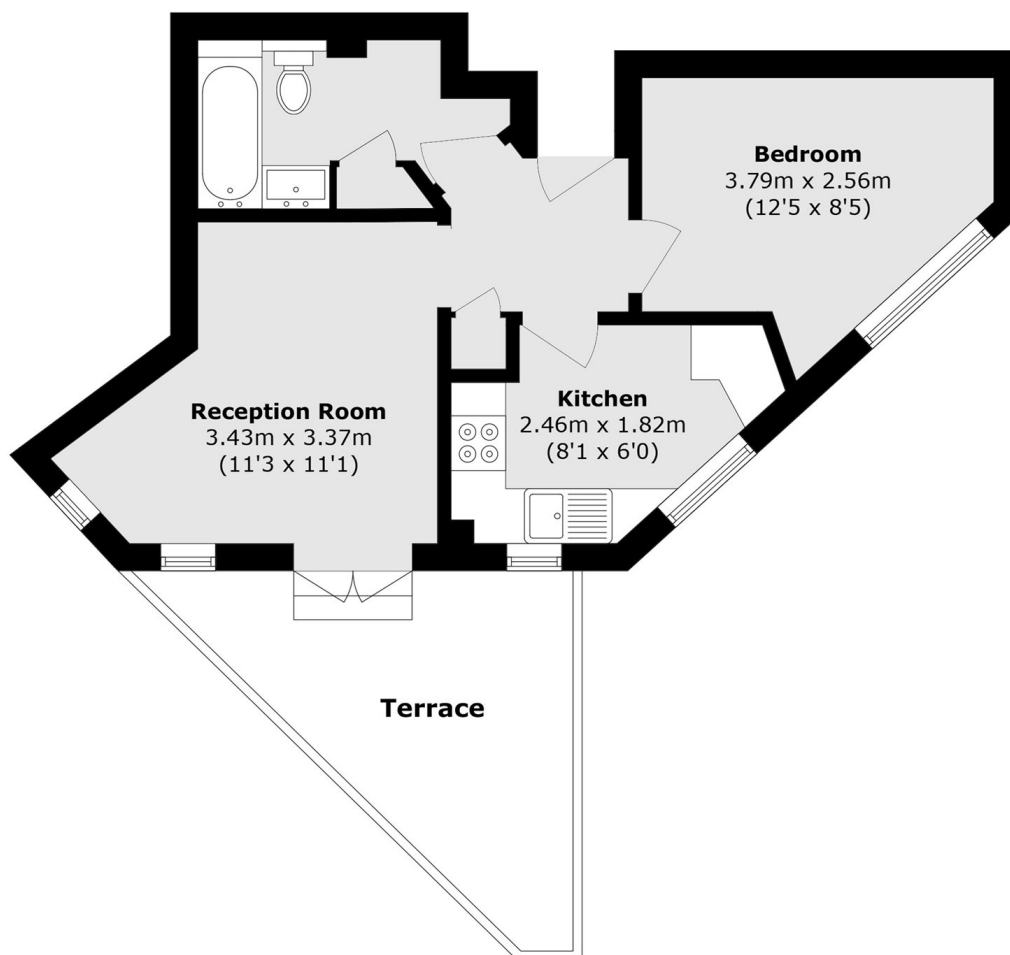
Situated in this sought after development, this one double bedroom flat is immaculately presented throughout and has a large living space, separate kitchen, modern bathroom, ample storage, allocated parking and a beautiful private garden.

Quilting Court is located only 0.3 miles from Canada Water station offering fantastic links to all of London. A wide range of shops, cafés and delis are also moments away.

Features

- One Double Bedroom
- Excellent Condition
- Private Garden
- Allocated Parking Space
- Views Of Canary Wharf
- Fantastic Location

Garter Way, London, SE16



Total area (approx.): 38.5 sq. m (414.4 sq. ft)

Terrace area (approx.): 11.2 sq. m (120.5 sq. ft)