



Beckway Road, SW16  
£535,000

**Dexters**



## Beckway Road, SW16

A beautifully presented, three bedroom family home with open plan living space, a modern finish through and separate garden room/office.

The accommodation comprises a porch opening into the entrance hall. The living space has been fully open-plan, providing fantastic natural light. The through reception room opens into the modern fitted kitchen, with French doors leading to the rear garden. Upstairs, there are three bedrooms and a family bathroom. Externally, the garden is laid with AstroTurf for easy maintenance and benefits from a home office/garden room, as well as additional storage.

Beckway Road is a conveniently located and quiet residential street, ideal for families. It offers excellent transport links with Streatham Common, Norbury, and Mitcham Eastfields stations nearby, as well as good bus routes. The area is within the catchment of local schools and also within walking distance, of a variety of shops, pubs, and cafés.

### Features

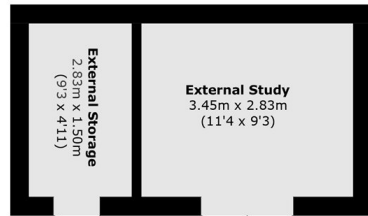
- Three bedrooms
- Excellent condition
- Openplan living
- Home office
- Low maintenance garden
- EPC:





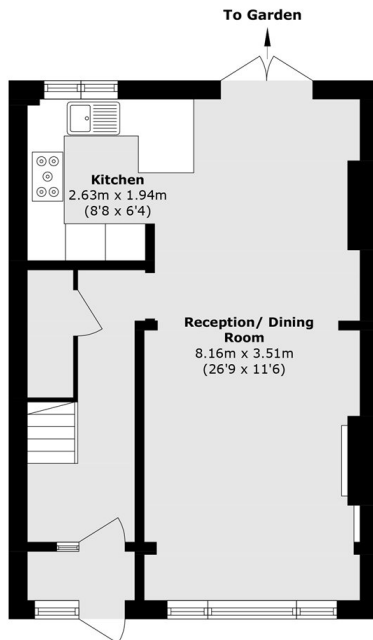


# Beckway Road, London, SW16

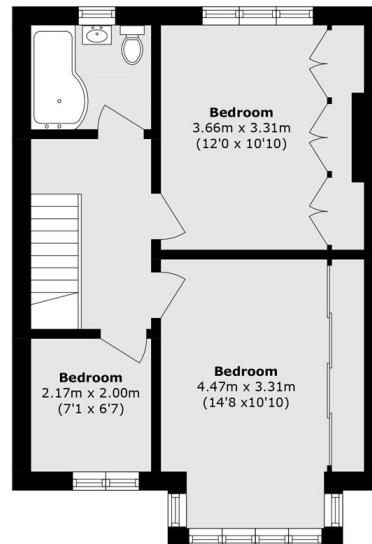


To Garden

## Ground Floor



## Ground Floor



## First Floor

Total area (approx.): 85.6 sq. m (921.4 sq. ft)  
External Study (approx.): 9.8 sq. m (105.5 sq. ft)  
External Storage (approx.): 4.8 sq. m (51.7 sq. ft)