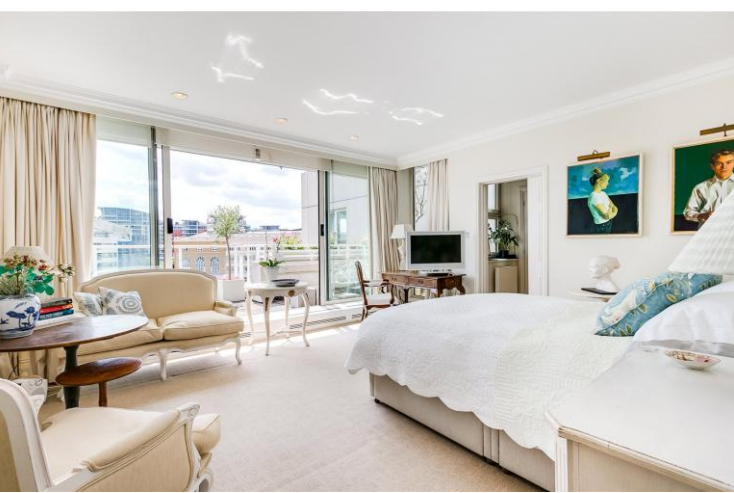




Kings Quay  
Chelsea, SW10

CHESTERTONS





(SHORT LET) A beautifully presented stunning three-bedroom apartment offers an exceptional blend of style, comfort, and convenience. Set in a prime riverside location, the property enjoys **west-facing views** that capture breathtaking sunsets across the harbour and the River Thames, creating a warm and inviting atmosphere throughout the living spaces.

The apartment features a bright and spacious open-plan living and dining area, designed to maximise natural light with large floor-to-ceiling windows. A fully equipped modern kitchen with high-spec appliances seamlessly integrates into the space, making it ideal for both relaxing and entertaining.

All three bedrooms are generously proportioned, with the principal bedroom benefiting from built-in storage and a sleek en-suite bathroom. The additional bedrooms are equally versatile, perfect for guests, family living, or a home office setup. A contemporary family bathroom and ample storage complete the interior.

- Three bedrooms
- One reception
- Three bathrooms
- Life
- Porter
- garage

**£10,833.33 pcm**

Additional tenant charges apply (fees apply to non-AST tenancies only)

Tenancy Agreement Fee: £300

References per Tenant/Guarantor: £60

Inventory check (approx. £100 – £250 inc. VAT)

[chestertons.co.uk/property-to-rent/applicable-fees](http://chestertons.co.uk/property-to-rent/applicable-fees)

Energy Efficiency Rating		Current	Potential
100-105	A		
81-100	B		85
62-80	C	78	
43-61	D		
25-42	E		
10-24	F		
1-9	G		

Not energy efficient - higher running costs

EU Directive 2002/91/EC

**Minimum Term:** 1 months  
**Deposit Required:** Five weeks  
**Local Authority:** Kensington and Chelsea  
**Council Tax Band:** H  
**EPC Rating:** C  
**Furnished**

**Chestertons Chelsea Lettings**

17 Cale Street

London

SW3 3QR

[chelsealettingsusers@chestertons.co.uk](mailto:chelsealettingsusers@chestertons.co.uk)

02075944750

[chestertons.co.uk](http://chestertons.co.uk)

# King's Quay, SW10

Approximate gross internal area  
170.10 sq m / 1831 sq ft  
(Excluding Lift)



Key :  
CH - Ceiling Height



## Fourth Floor

The floor plan is not to scale and measurements and areas shown are approximate and therefore should be used for illustrative purposes only. The plan has been prepared in accordance with the RICS code of Measuring Practice and whilst we have confidence in the information produced, it must not be relied on. If there is any aspect of particular importance, you should carry out or commission your own inspection of the property.  
Copyright of FeaturePRO.

Chesterton UK Services Limited trading as Chestertons for themselves and for the vendor of this property whose agents they are, give notice that (i) these particulars do not constitute any part of an offer or contract, (ii) all statements contained within these particulars are made without responsibility on the part of Chestertons or the vendor, (iii) whilst made in good faith, none of the statements contained within these particulars are to be relied upon as a statement or representation of fact, (iv) any intending purchasers must satisfy themselves by inspection or otherwise as to the correctness of each of the statements contained within these particulars, (v) the vendor does not make or give either Chestertons or any person in their employment any authority to make or give representation or warranty whatsoever in relation to this property. Wide angle lenses may be used. ©Copyright Chestertons | Chesterton Global Ltd | Registered Office 5th Floor, The Lantern, 75 Hampstead Road, London, NW1 2PL Registered Company Number 05334580.



This paper is  
100% recyclable