



Colville Terrace, W11

£575,000

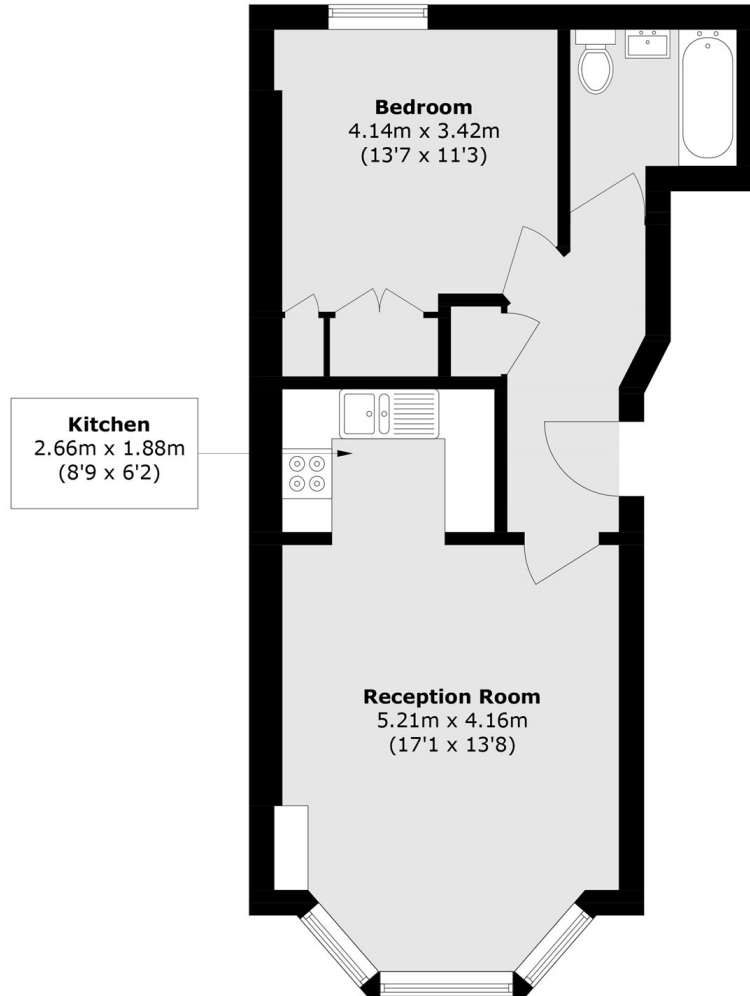
Situated on Colville Terrace, one of Notting Hill's most colourful addresses, is a one bedroom apartment in a Victorian period conversion. The property has a spacious open plan reception with high ceilings, wooden flooring, a large bay window and a fitted kitchen. The double bedroom is equally as spacious with plenty of room for storage.

Colville Terrace is a sought after, prime Notting Hill address and provides close proximity to plenty of local shops, restaurants and pubs on Westbourne Grove and Portobello Road. Ladbroke Grove and Notting Hill Gate underground stations are also nearby.

Features

- One Double Bedroom
- Share Of Freehold
- Raised Ground Floor
- High Ceilings
- Wooden Flooring
- Notting Hill

Colville Terrace, London, W11



Total area (approx.): 48.7 sq. m (524.2 sq. ft)