



7 Coberley Close, Downhead Park
£620,000



7 Coberley Close

Downhead Park, Milton Keynes

Spacious five-bed detached home in sought-after Downhead Park. Features multiple receptions, refitted kitchen, en-suite, family bathroom, utility, and parking for four cars. Ideal for families. Council Tax band: E

Tenure: Freehold

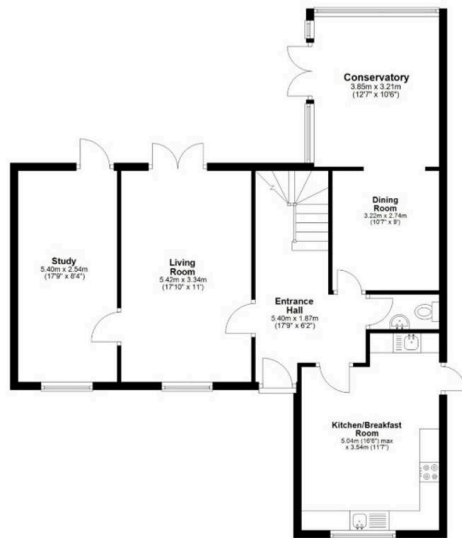
- Five-bedroom detached self-build home
- Located in the highly desirable Coberley Close, Downhead Park
- Quiet cul de sac
- Ideal family home
- Well-proportioned bedrooms throughout





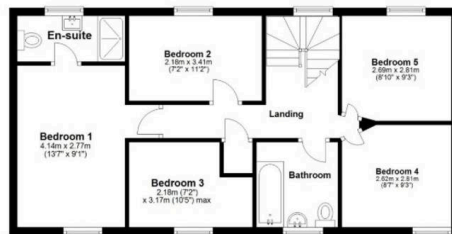
Ground Floor

Approx. 84.5 sq. metres (909.2 sq. feet)



First Floor

Approx. 60.1 sq. metres (646.8 sq. feet)



Total area: approx. 144.6 sq. metres (1556.0 sq. feet)



Elevation

Elevation Estate Agents, Beechwood House - MK5 8FT

01908
231551 • residential@elevationestateagents.com • www.elevationestateagents.com/

