

abbotFox

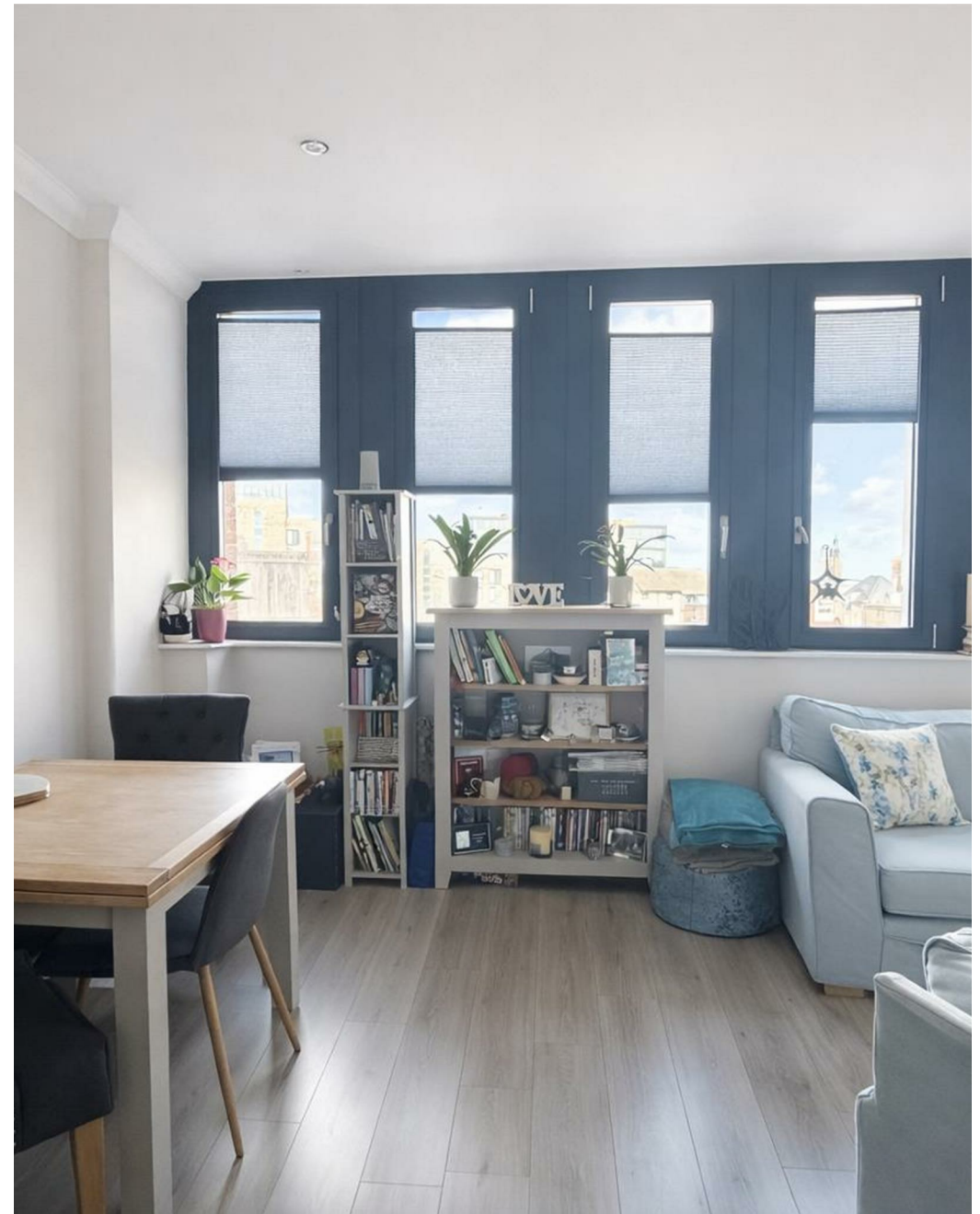


Sentinel House, Norwich, NR1
Offers In Excess Of £200,000

“

We are a team of genuine individuals who hold a deep passion for both property and marketing. Collectively, we bring over 70 years of experience in the property market of Norfolk and Suffolk. Our affection for both counties runs deep, and we are enthusiastic about sharing our passion with you.

Colin McKenzie | **Branch Partner**







THE DETAIL _____

abbotFox present this stylish and well proportioned two- bedroom apartment with parking, ideally located within the sought after Sentinel House development. Offering contemporary living throughout, this home is perfectly suited to first-time buyers, professionals, or investors alike.

The accommodation is thoughtfully arranged, featuring a generous open plan living space that seamlessly incorporates a modern fitted kitchen, creating an ideal setting for both relaxing and entertaining. Two well sized bedrooms provide comfortable accommodation, complemented by a sleek and well appointed bathroom.

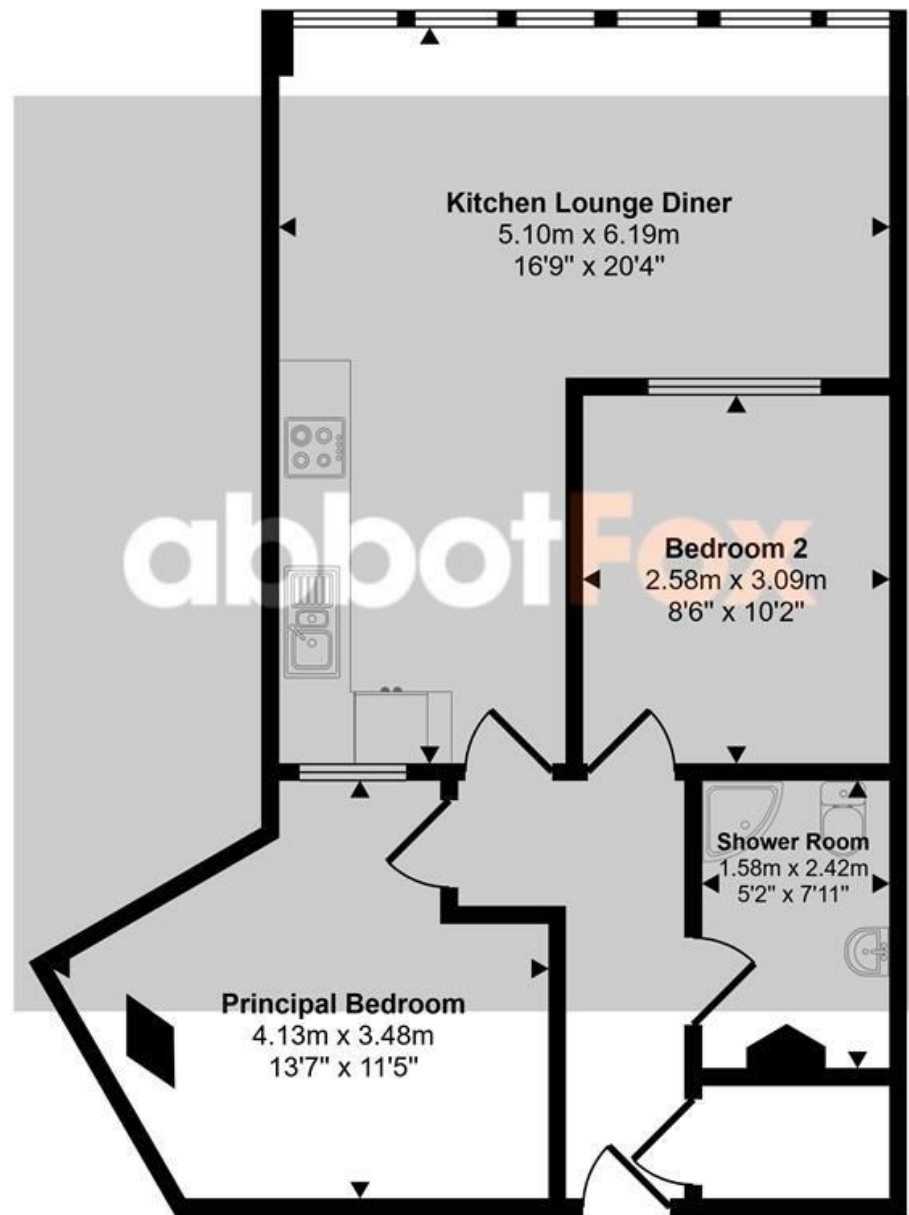
Finished to a high standard, the property benefits from a light and airy feel throughout, with large windows enhancing the sense of space.

Situated within easy reach of local amenities and transport links, this attractive apartment offers convenience alongside modern living. An early viewing is highly recommended to appreciate all that this property has to offer.



THE HIGHLIGHTS _____

- Two bedroom apartment
- Open plan living accomodation
- Secure, allocated parking
- Excellent on-site amenities including residents gym and concierge
- Convenient city centre location
- Ideal investment opportunity
- Viewing advised



Floorplan

Let's talk

01603 660000

sales@abbotfox.co.uk

@abbotfox

EPC RATING -

Disclaimer – In accordance with the Property Misdescriptions Act, the company abbotFox gives notice that all descriptions, references to condition, necessary permissions for use and other details are given in good faith and believed to be correct, but any purchaser should not rely on them as statements of fact, and must satisfy themselves by inspection or other means, as to their accuracy.