

38 Lennox Road

Hove, BN3 5HY

£2,350 Per month

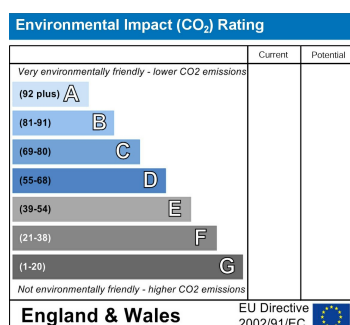
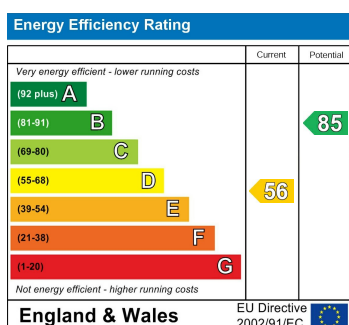
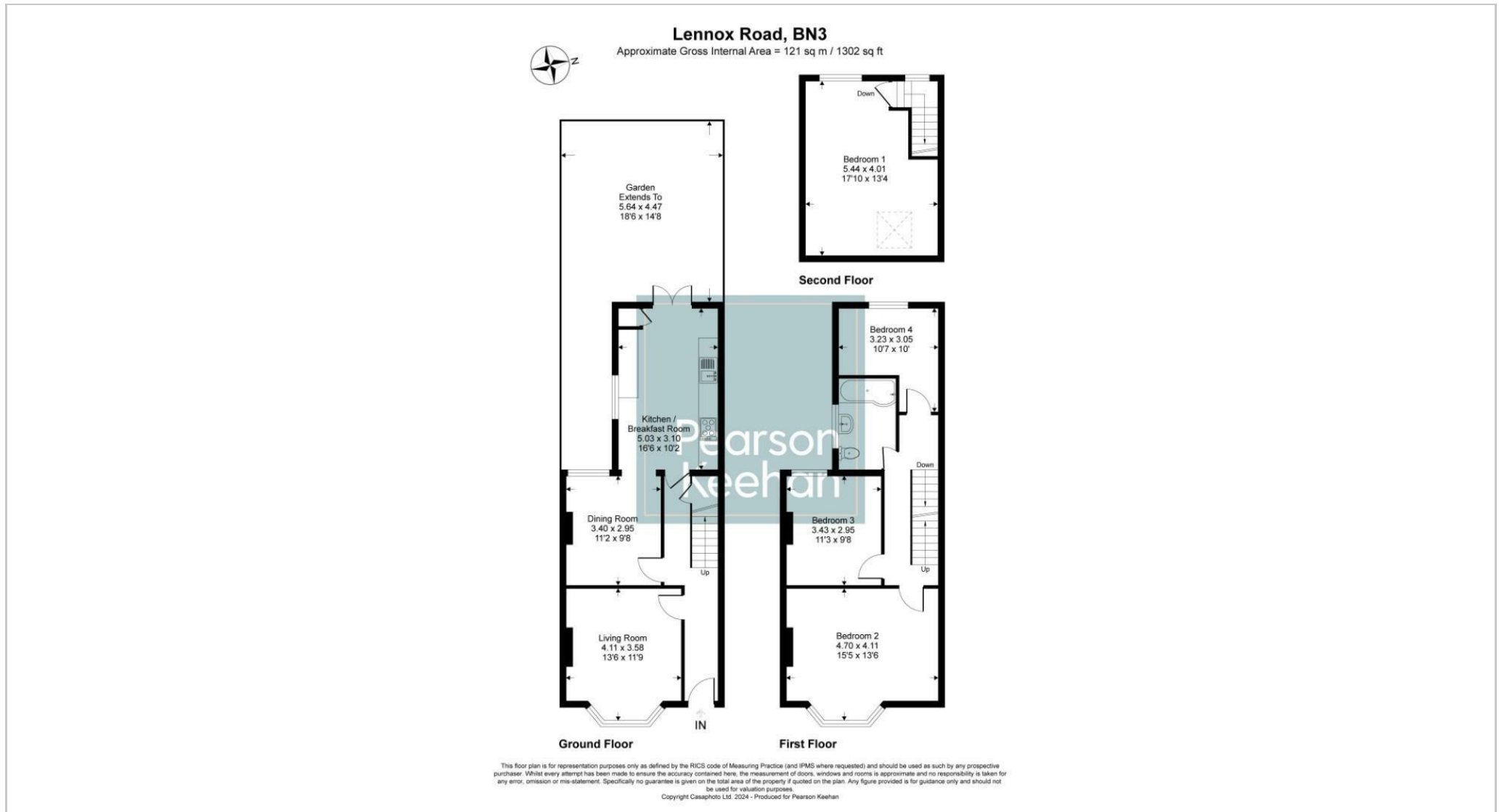
An immaculately presented four bedroom end-of-terrace house with west facing garden situated in the trendy Poets Corner district of Hove.

Stepping inside this three storey Victorian home, you are immediately greeted by an elegantly tiled hallway that leads you to a cosy bay-fronted living room to the front of the house. Set behind, is a second reception room that could be used as a home office or kids play room, which in turn, also leads through to the kitchen. The kitchen is a lovely bright, dual aspect space where you can dine and provides access of the westerly aspect private garden.

Moving upstairs to the first floor, you have a contemporary family bathroom and three bedrooms and completing the accommodation on the second floor is a further expansive bedroom.

Outside, the private west facing garden has been recently laid with astroturf offering low maintenance.

In terms of location, Lennox Road is situated in the heart of Poets Corner, where, within easy reach, you can find a number of trendy coffee shops, eateries and other independent stores on the Portland Road thoroughfare. Hove Beach is within walking distance, and the property's location also allows for easy access to several excellent local schools, including the extremely sought-after West Hove School. Nearby transport links include Aldrington & Hove Station which provide direct trains to Gatwick and London.



**Pearson
Keehan**