



STAVERTON ROAD, NW2

£403 per week

One Bedroom
First Floor
Open Plan
Integrated Kitchen
Tiled Bathroom
Period Conversion

@marshandparsons
marshandparsons.co.uk

MARSH &
PARSONS



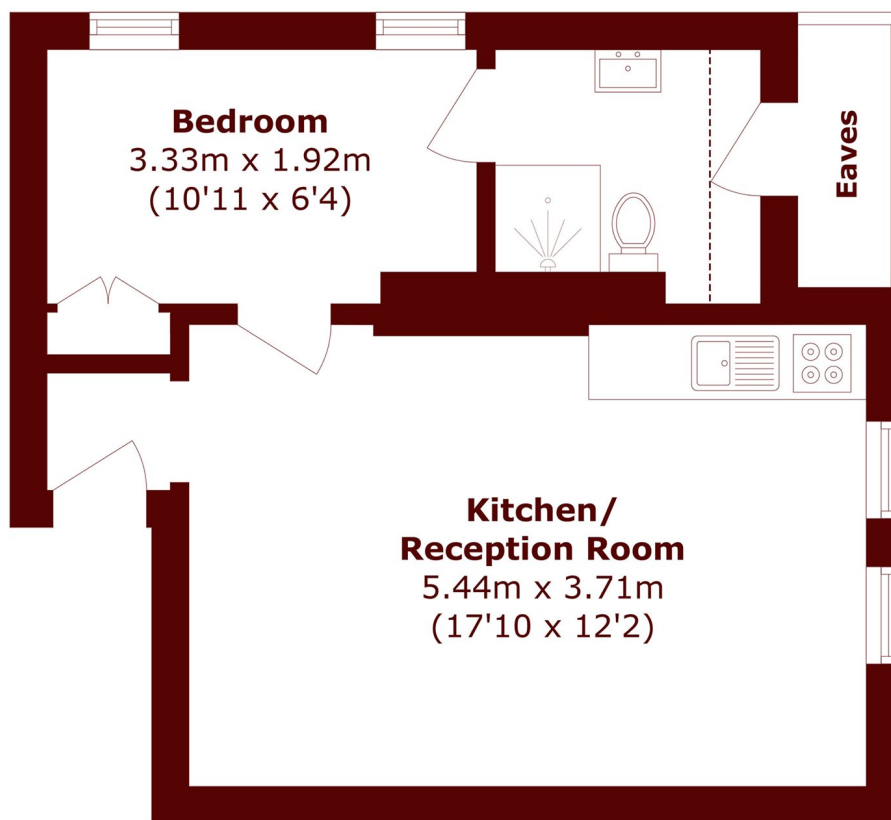
ABOUT THE PROPERTY

This one bedroom first floor flat is ideally located in Willesden Green with excellent transport links and local amenities near by. The flat has an open-plan living area, a well sized bedroom with built in storage and a tiled shower room.

Staverton Road is a quiet residential street well situated with many boutique cafés, restaurants, and local amenities near by. Willesden Green, Queen's Park and Kensal Rise are all within walking distance and Willesden Green and Brondesbury Park stations are also on your doorstep.



STEP INSIDE STAVERTON ROAD



Total area (approx.): 33.8 sq. m (363.8 sq. ft)
(Excluding Eaves)

Willesden Green
020 8939 1780

Energy Rating: C We aim to make our particulars both accurate and reliable. However, they are not guaranteed; nor do they form part of an offer or contract. If you require clarification on any points then please contact us, especially if you're traveling some distance to view. Please note that appliances and heating systems have not been tested and therefore no warranties can be given as to their good working order

MARSH &
PARSONS