



Beresford Avenue, KT5

£699,950

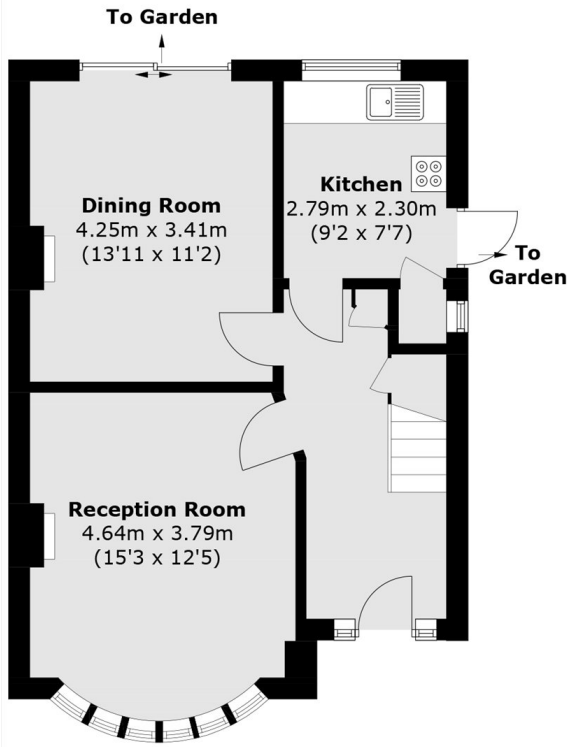
This spacious semi-detached home presents a fantastic opportunity for buyers looking to refurbish and extend to create their ideal family home. There are two good sized reception rooms, a kitchen, garage, three bedrooms, family bathroom and a large garden. The property has been in the same family for over 50 years and further benefits from off street parking and scope to extend onto the loft, side and rear.

Situated in a family-friendly neighbourhood close to Surbiton and Tolworth, offering excellent transport links with easy access to London Waterloo via Surbiton Station. The area is also well-served by reputable local schools, parks, and everyday amenities making it a fantastic choice for families and commuters alike.

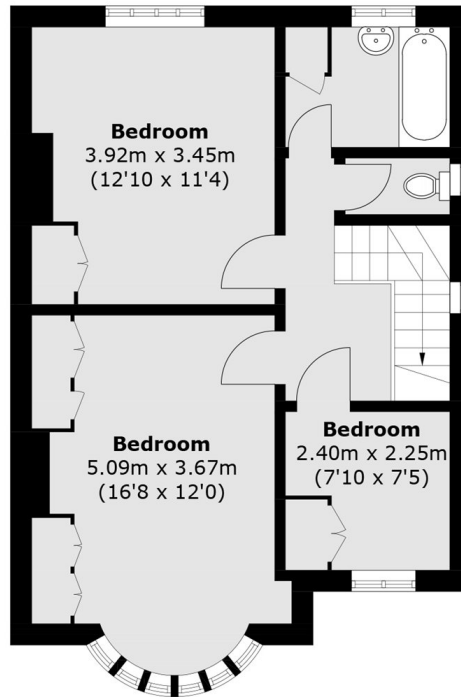
Features

- Semi Detached
- Three Bedrooms
- Large Garden
- Refurbishment Opportunity
- Scope to Extend (STPP)
- Garage & Off Street Parking

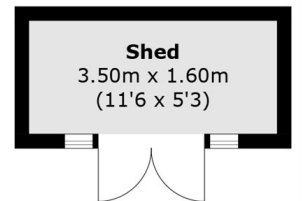
Beresford Avenue, Surbiton, KT5



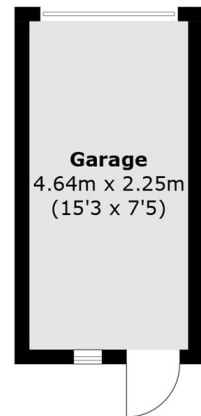
Ground Floor



First Floor



(Not Shown In Actual
Location / Orientation)



(Not Shown In Actual
Location / Orientation)

Total area (approx.): 98.8 sq. m (1,063.5 sq. ft)
Outbuilding : 5.6 sq. m (60.3 sq. ft)
Garage : 10.4 sq. m (111.9 sq. ft)