



## Kings Avenue, SW4

£535,000

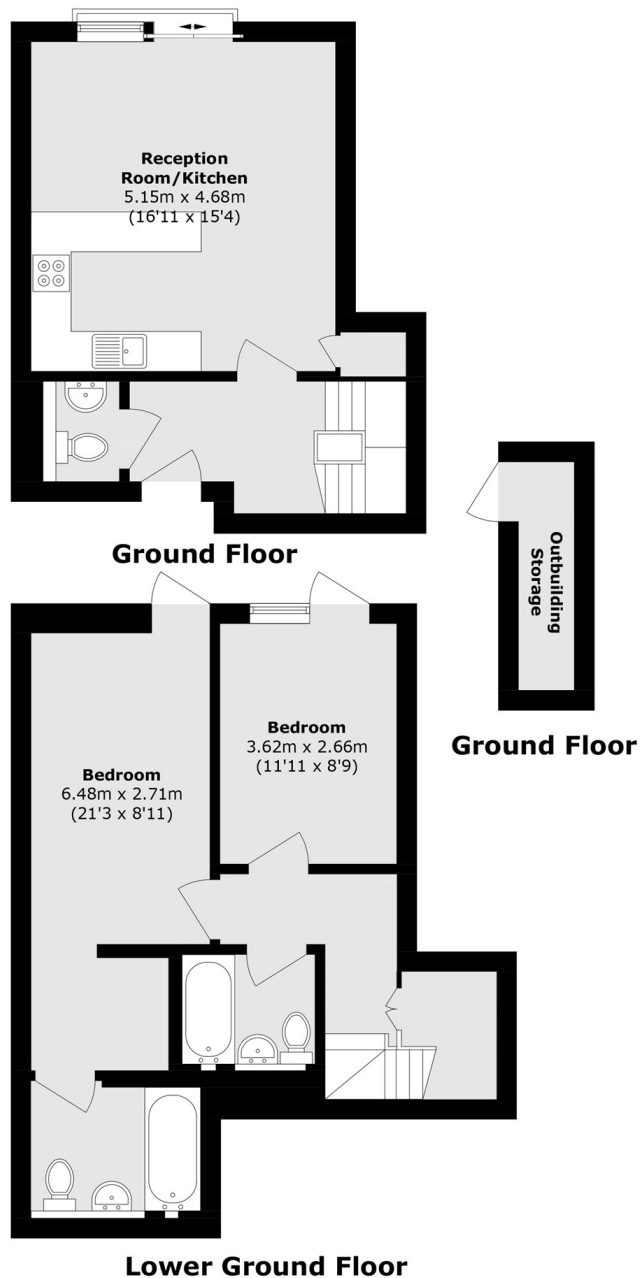
Set within a modern development, this stylish split-level apartment offers well-balanced accommodation, private outdoor space and off-street parking. It features a spacious open-plan kitchen/reception room with large windows and a Juliet balcony, two double bedrooms with access to outside space, an en suite, a separate bathroom and an additional WC. Right to Manage (RTM) confirmed from 31st July 2026, giving leaseholders greater control over the building's management

Kings Avenue provides easy access to the shops, bars, and restaurants of Abbeville Village, central Clapham, and central Brixton. Excellent transport links include Clapham Common, Clapham North & Brixton Underground Stations. The area is also well served by a wide selection of both state and independent schools.

### Features

- Two Double Bedrooms
- Two Bathrooms
- Private Garden
- Additional WC
- Juliet balcony
- Gated Off Street Parking

# Kings Avenue, London, SW4



Total area (approx.): 80.7 sq. m (868.6 sq. ft)  
Outbuilding area (approx.): 2.9 sq. m (31.2 sq. ft)