



# Alma Square

St John's Wood, NW8

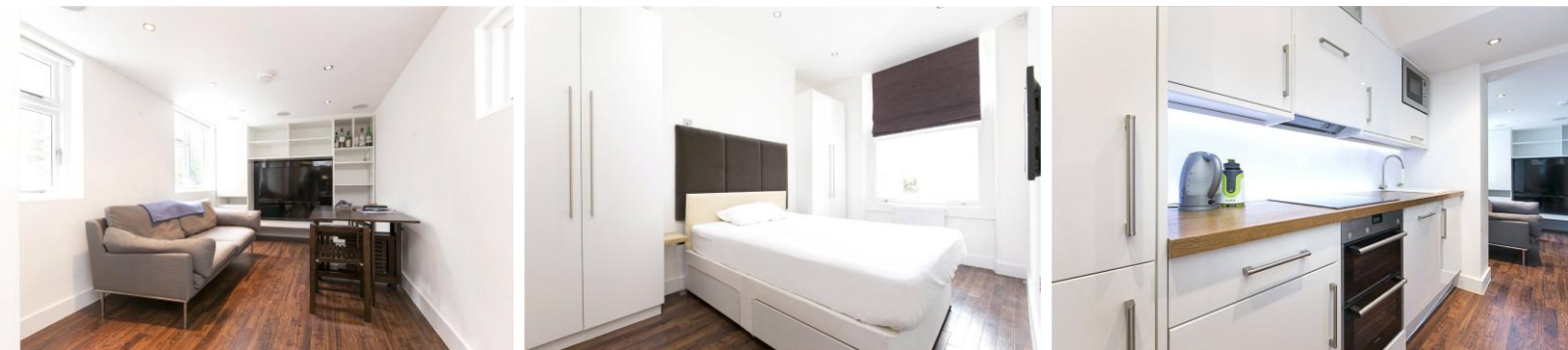
Asking Price £695,000

Sole Agent. A beautiful 2 bedroom raised ground floor apartment, benefiting from access to the gated communal gardens of Alma Square.

The property comprises; two bedrooms, two bathrooms (both en suite), modern open plan kitchen/living room with integrated appliances and wood flooring.

Additional benefits include entry phone system, double glazed sash windows, gas central heating and it is ideally located within close proximity to St John's Wood Underground station (Jubilee Line) and the amenities of St John's Wood High Street.

**CHESTERTONS**



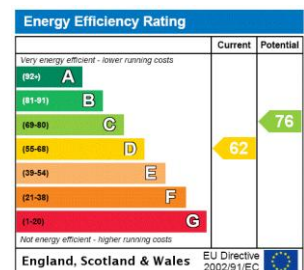
# Alma Square

St John's Wood, NW8

- 2 Bedroom 2 Bathroom Apartment
- 124 Year Leasehold
- 609 sq. ft.
- Access to Garden Square
- Very Good Condition



**Tenure:** Leasehold  
**Service Charge:** £500pa  
**Ground Rent:** £0  
**Local Authority:** Westminster  
**Council Tax Band:** D

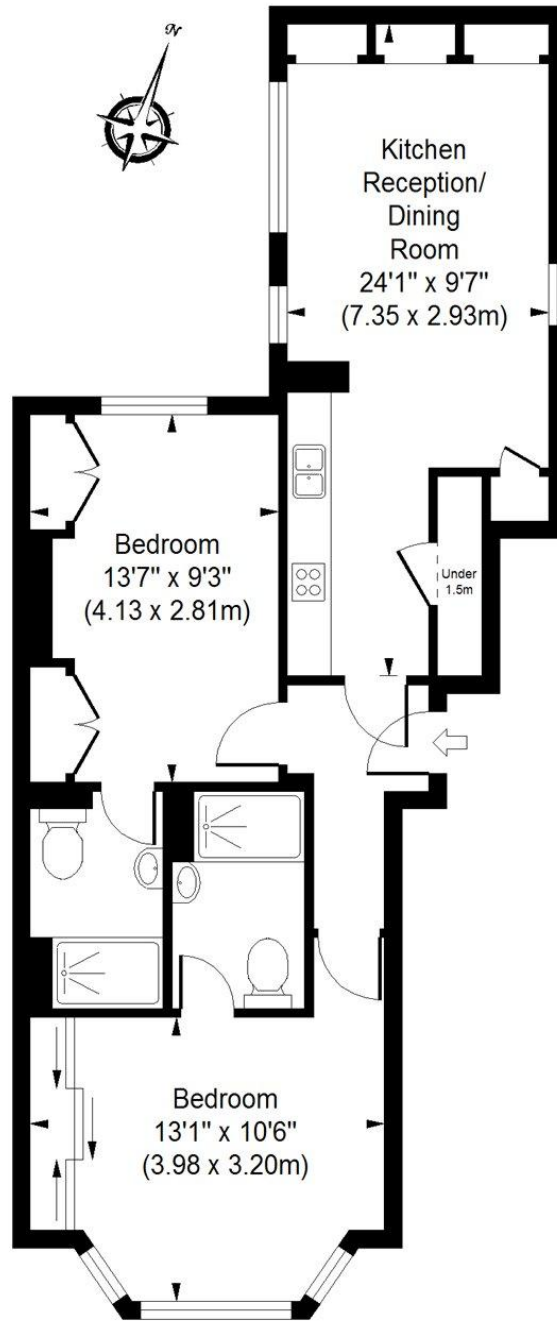


### *Chestertons St John's Wood Sales*

105 St. John's Wood Terrace  
London  
NW8 6PL  
stjohnswood@chestertons.co.uk  
020 3040 8611  
chestertons.co.uk

# Alma Square

Approximate Gross Internal Area  
609 sq ft / 56.53 sq m



Upper Ground Floor

ILLUSTRATION FOR IDENTIFICATION PURPOSES ONLY

ALL MEASUREMENTS ARE MAXIMUM, AND INCLUDE WINDOW BAYS AND WARDROBES WHERE APPLICABLE  
THIS PLAN MUST NOT BE REPRODUCED BY ANY OTHER PERSON WITHOUT PERMISSION

