



Westbourne Park Road, W11

£475,000

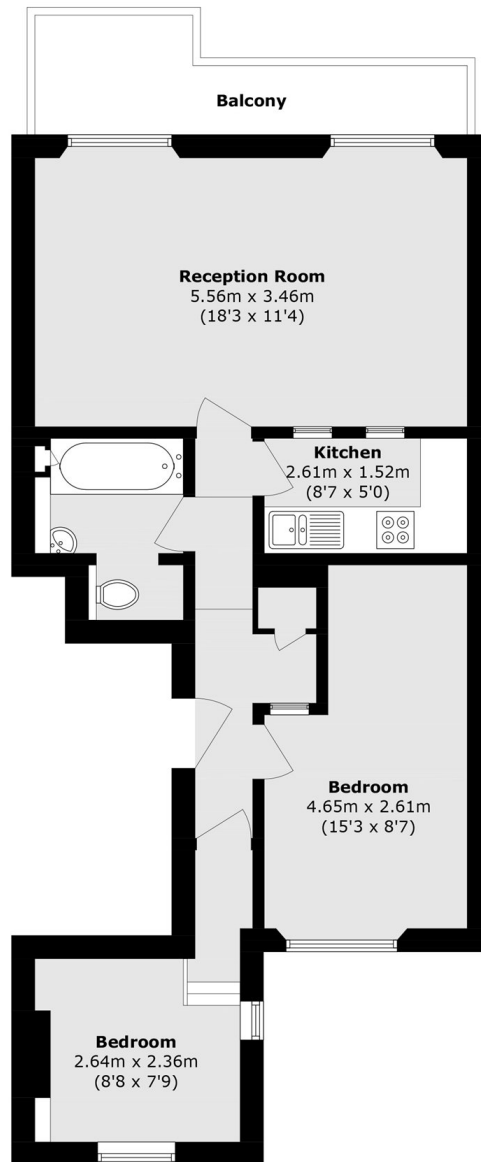
An unmodernised first floor flat in a Victorian conversion. Currently a two bedroom apartment with a separate kitchen and spacious reception room, perfect for anyone looking to modernise and reconfigure (subject to the usual consents). Please note, the lease expires 29/09/2074.

Westbourne Park is popular Notting Hill address, within easy walking distance of Westbourne Park and Ladbrooke Grove tube stations. The chic bars and restaurants on Westbourne Grove and Portobello Road are close by, as are the green spaces of Hyde Park.

Features

Two Bedrooms
First Floor Flat
Balcony
Unmodernised
Lease Expires 29/09/2074
Victorian Conversion

Westbourne Park Road, London, W11



First Floor

Total area (approx.): 52.8 sq. m (568.3 sq. ft)

Balcony area (approx.): 6.3 sq. m (67.8 sq. ft)