



## Farrow Lane, SE14

£425,000

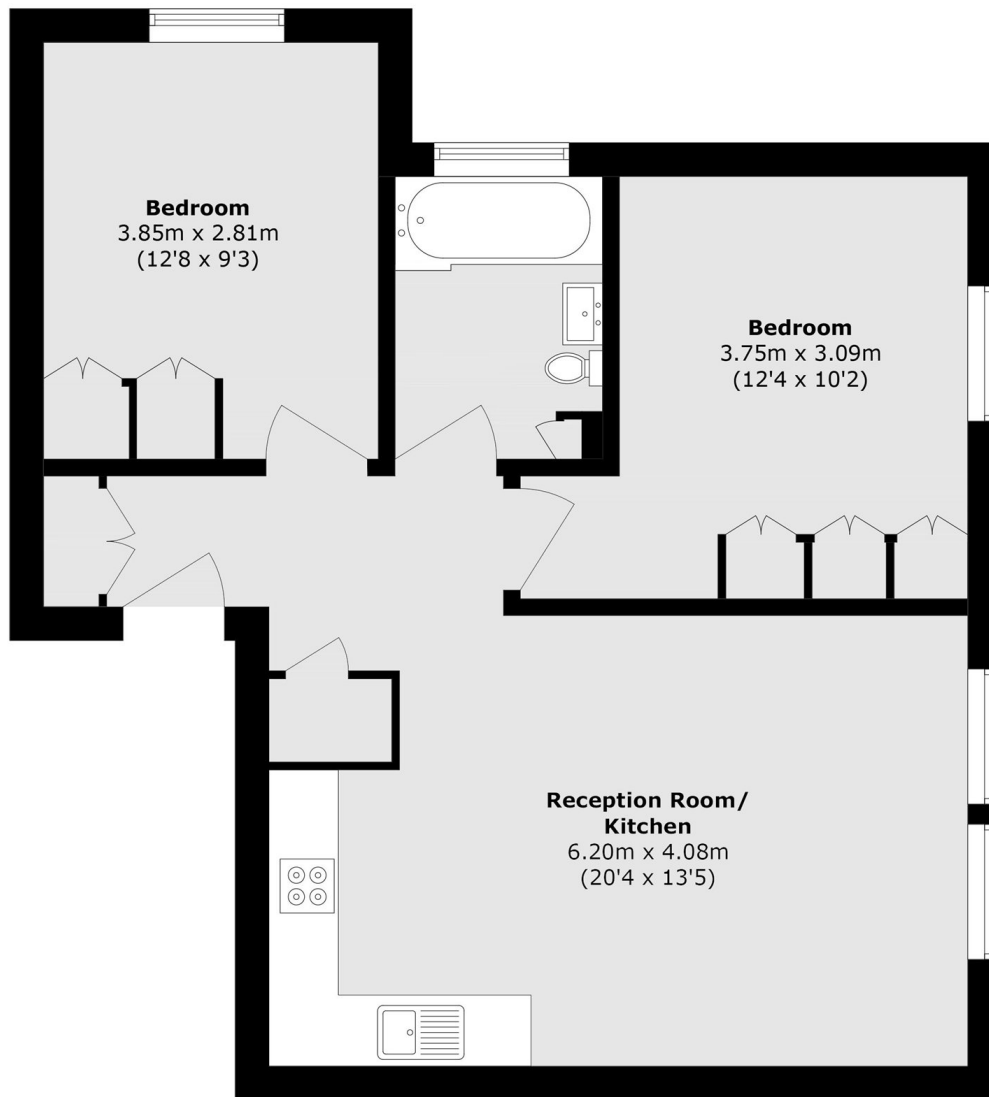
Set within a charming development is this stunning two double bedroom apartment. This home has been tastefully renovated throughout and boasts a bright contemporary interior, ample storage and an abundance of natural light.

Glastonbury Court is ideally located near supermarkets, gyms, bars, cafés, and restaurants. Just a short walk from New Cross Gate Station, it offers excellent links to London Bridge, Canada Water, Victoria, Highbury & Islington, and Charing Cross, with regular bus services to central London via Old Kent Road.

### Features

- Two Double Bedrooms
- Charming Development
- Open Plan Living
- Newly Renovated
- Off Street Parking
- Close To Transport Links

# Farrow Lane, London, SE14



Total area (approx.): 60.1 sq. m (646.9 sq. ft)