



Vicarage Avenue, Cheadle Hulme, SK8 7JW
£650,000

SNAPEs
SALES & LETTINGS AGENTS





SNAPES
SALES & LETTINGS AGENTS



Vicarage Avenue

Cheadle Hulme, Cheadle

Council Tax band: D

Tenure: Freehold

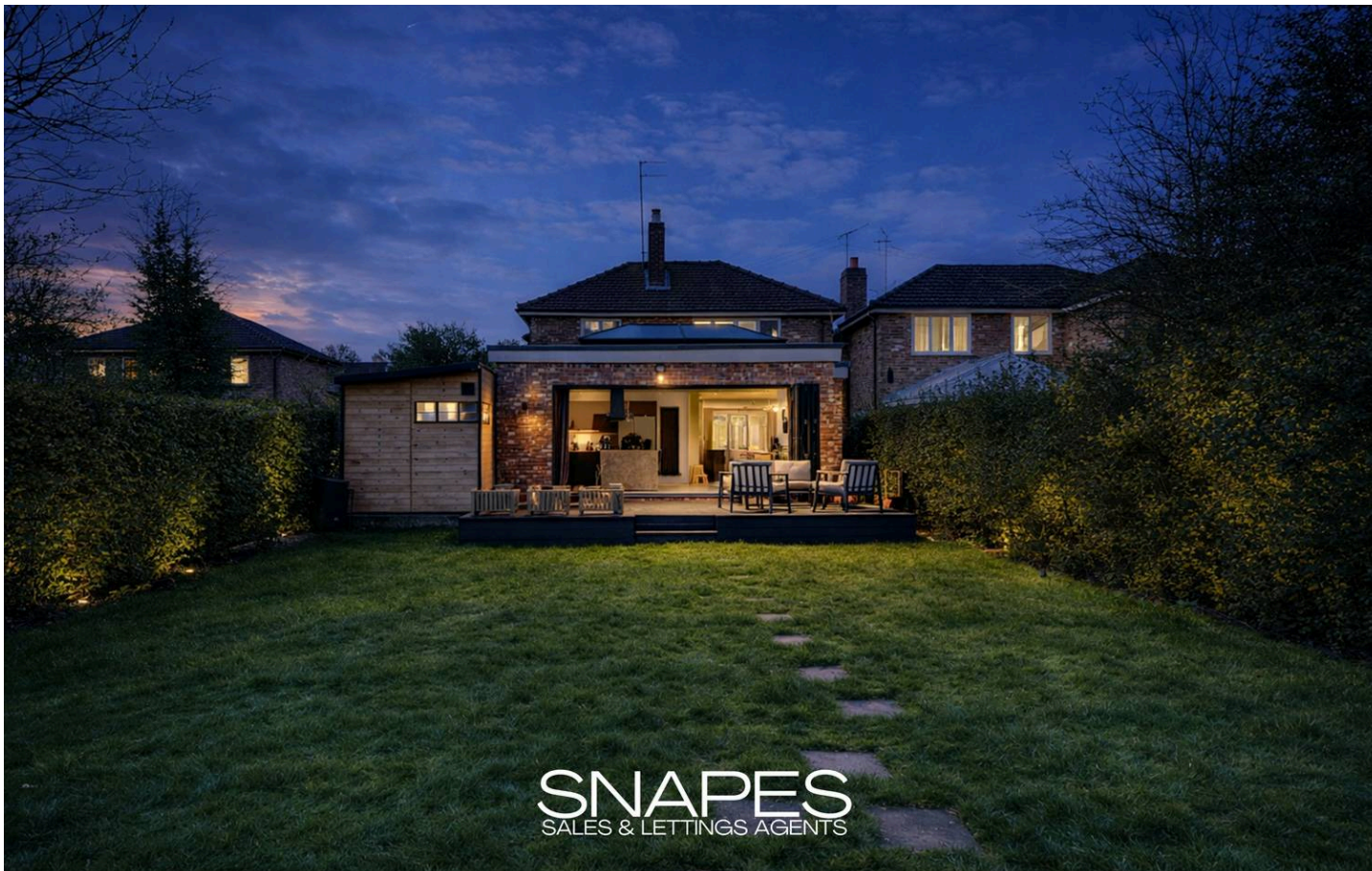
EPC Energy Efficiency Rating: C

EPC Environmental Impact Rating:

- Stunning & Completely Renovated Four Bedroom Detached Home
- Fabulous Extended "Nobilia" Kitchen Diner With Bi-Folds & Feature Roof Lantern
- Entrance Hallway & Living Room
- Large Double Bedroom & Stylish Ensuite To Ground Floor
- Utility Room
- Three Bedrooms To First Floor & Stunning Bathroom
- Large Private Rear Garden & Outside Store
- Ample Driveway Parking
- Catchment For Hursthead Primary & Cheadle Hulme High School
- Freehold



SNAPES
SALES & LETTINGS AGENTS



SNAPES
SALES & LETTINGS AGENTS

Entrance Hallway
10' 2" x 6' 4" (3.09m x 1.94m)

Utility Room
10' 3" x 6' 2" (3.12m x 1.87m)

Bedroom Four
14' 10" x 11' 10" (4.51m x 3.61m)

Ensuite
5' 5" x 6' 3" (1.64m x 1.90m)

Living Room
17' 2" x 11' 3" (5.23m x 3.43m)

Open Plan Kitchen Diner
18' 8" x 21' 9" (5.70m x 6.63m)

Master Bedroom
10' 2" x 15' 0" (3.10m x 4.56m)

Bedroom Two
9' 11" x 9' 10" (3.03m x 3.00m)

Bedroom Three
6' 8" x 9' 11" (2.03m x 3.03m)

Bathroom
10' 1" x 6' 0" (3.07m x 1.84m)

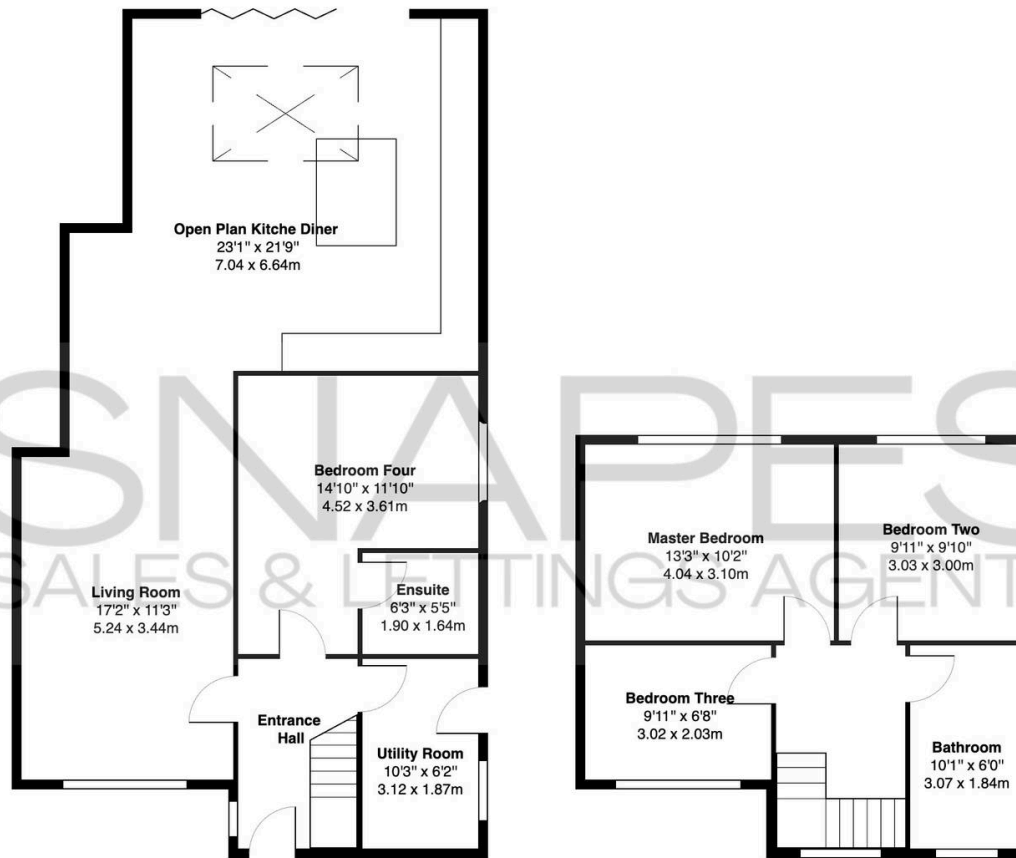


SNAPES
SALES & LETTINGS AGENTS



SNAPES
SALES & LETTINGS AGENTS





Ground Floor
Approximate Area: 936 ft² ... 87.0 m²

First Floor
Approximate Area: 465 ft² ... 43.2 m²

Approximate Total Area: 1402 ft² ... 130.2 m²

All measurements are approximate.
The floorplan may not include chimney breasts or support ribs and/or very small recess areas.
If a total floor area is quoted, this will include ALL areas shown on the plan, inc garages.
The area is calculated by the software and is approximate.

Cheadle Hulme Office

Andrew Snape Estate Agents, 31 Station Road – SK8 5AF

0161 485 2244 • cheadlehulme@snapes.co.uk • www.snapes.co.uk/