



RESIDE  
MANCHESTER



Worsley Mill Blantyre Street  
Castlefield, Manchester, M15 4LG

Asking Price £190,000



## Worsley Mill Blantyre Street

Castlefield, Manchester, M15 4LG

A south facing 1 bedroom apartment situated in Worsley Mill.

It is housed in a grade II listed building situated in the heart of Castlefield, boasting an array of original features, such as exposed brickwork and steel beams. The apartment comprises a beautifully designed open plan living area and kitchen, one bedroom and one bathroom.

Located on Blantyre Street, this building is ideally situated just a stone's throw away from numerous bars and restaurants, including Barca Bar, Albert Shed, and Dukes 92. Manchester City Centre and Spinningfields are both conveniently located within a 10-minute walk.

### Worsley Mill

Worsley Mill was built when Manchester was at the forefront of world attention as the birthplace of the industrial revolution. Persimmon's design team restored this old flour mill in 2007 whilst preserving many original features.

### The Tour

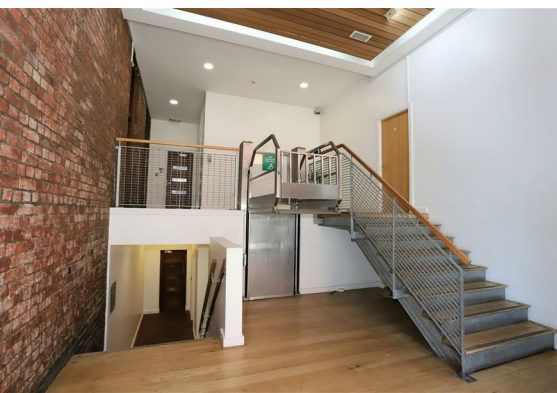
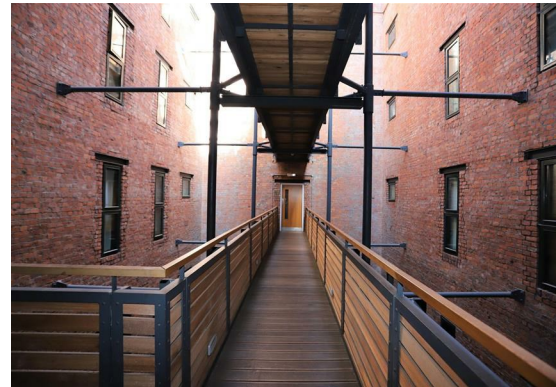
The apartment is South facing and located on the 1st floor of the popular Worsley Mill. You enter into a spacious hallway with laminate flooring throughout.

Living Room/Kitchen: Exposed brickwork featured in the living area with wooden flooring throughout, TV satellite point and wall mounted electric heaters. The kitchen includes a free standing fridge/freezer, baumatic frameless hob and electric oven.

Bedrooms: Fully carpeted bedrooms with TV and satellite points wall mounted electric heater.

Bathroom: Tiled bathroom offering a three piece suite and a shower over the bath with a heated towel rail.





### The Area

Castlefield is an inner-city conservation area. It is a unique and historic district, renowned for its beautifully preserved canals, industrial heritage, and Victorian architecture. The area was once home to the Roman, and its rich history is still visible in the many historical sites and monuments throughout the neighborhood.

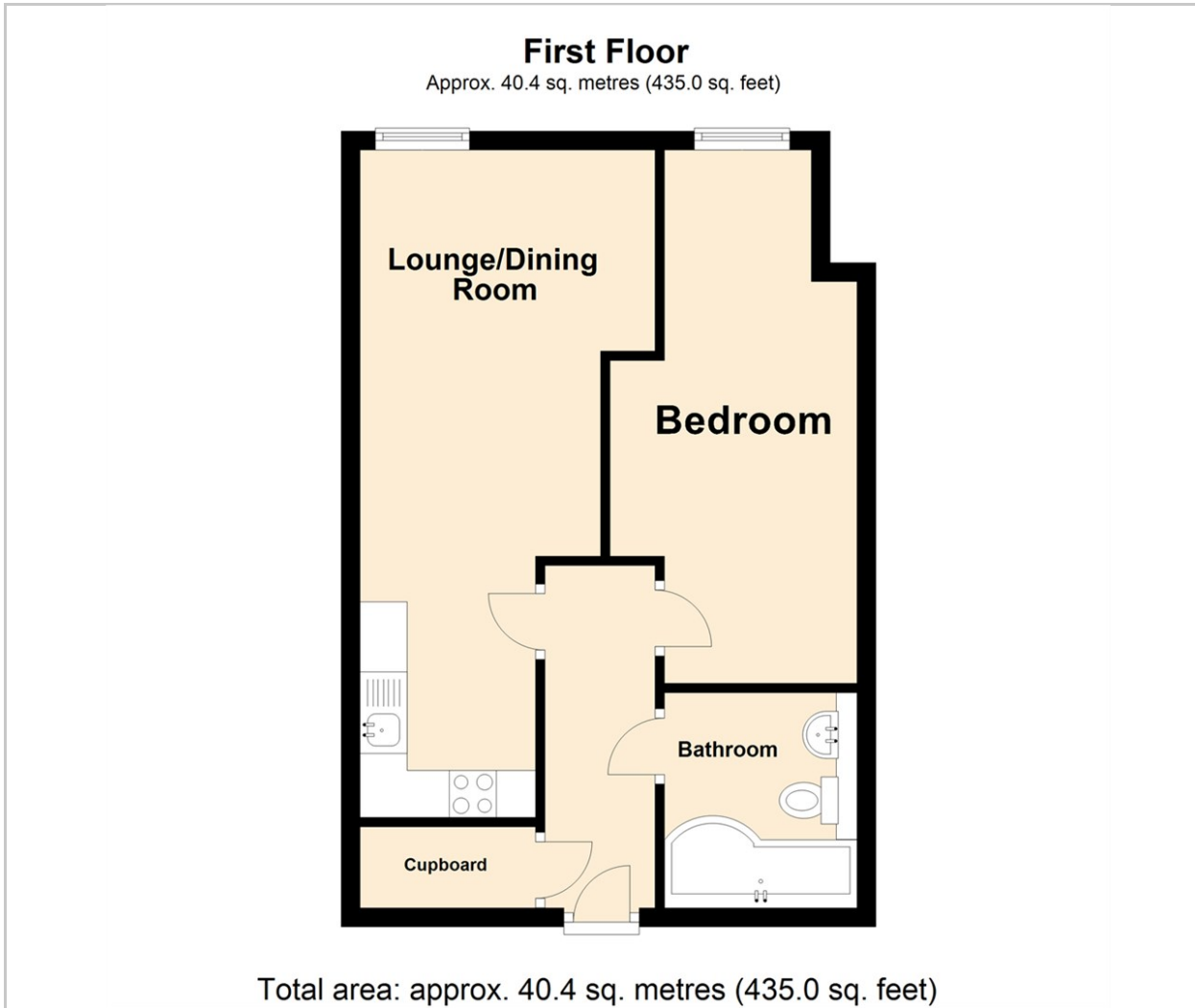
The area is home to numerous bars, restaurants, and cafes, as well as a variety of cultural and recreational facilities. The Castlefield Bowl, an outdoor concert venue, is a popular spot for live music events and festivals, while the nearby Museum of Science and Industry provides visitors with an immersive experience of Manchester's industrial history.

### Lease Information

Length of Lease - 999 years from 2003  
Service Charge - £2,327 per annum  
Ground Rent - £150 per annum (no review)

- One Bedroom Apartment
- One Bathroom
- Original Features Throughout
- Grade II Listed Conversion
- No Chain
- EPC Rating C
- EWS1 Form Available
- Central Castlefield Location

## Floor Plan

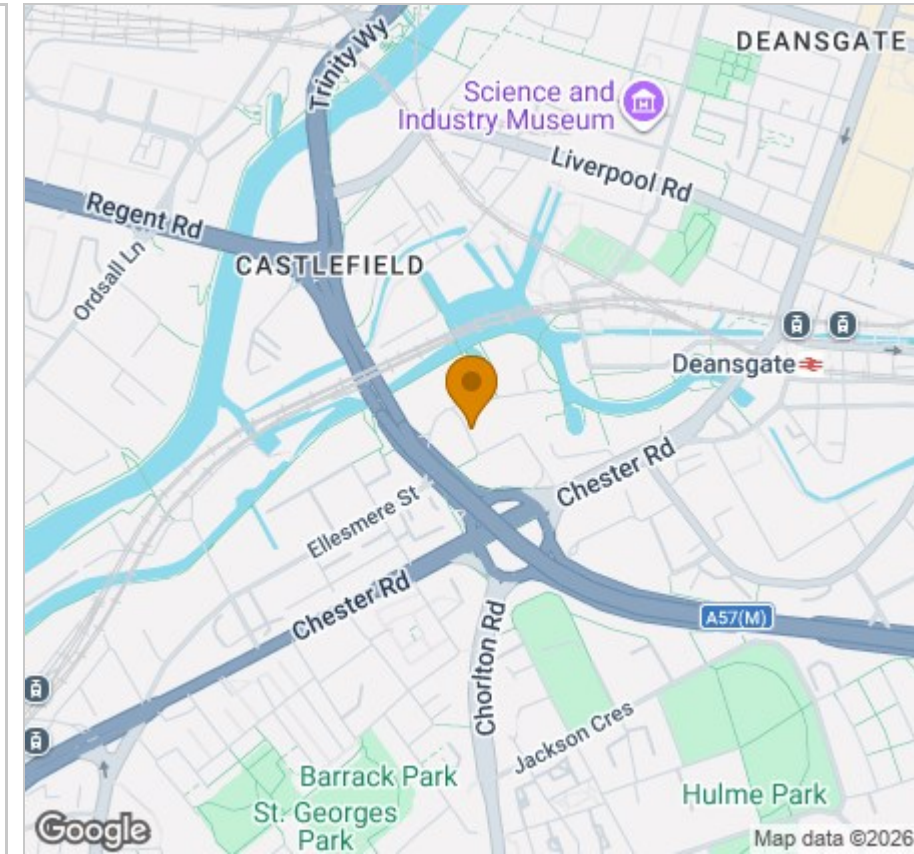


## Viewing

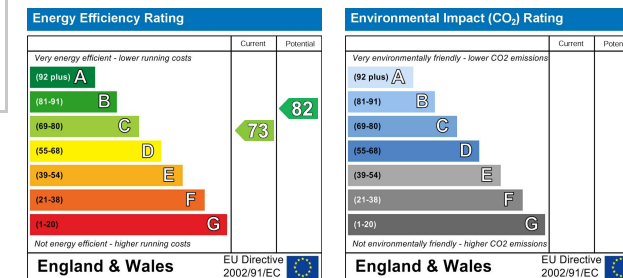
Please contact our Reside Manchester Office on 0161 837 2840 if you wish to arrange a viewing appointment for this property or require further information.

These particulars, whilst believed to be accurate are set out as a general outline only for guidance and do not constitute any part of an offer or contract. Intending purchasers should not rely on them as statements of representation of fact, but must satisfy themselves by inspection or otherwise as to their accuracy. No person in this firm's employment has the authority to make or give any representation or warranty in respect of the property.

## Area Map



## Energy Efficiency Graph



Upper Ground, 4 Jordan Street, Manchester, Greater Manchester, M15 4PY

Tel: 0161 837 2840 Email: [info@residemanchester.com](mailto:info@residemanchester.com) [www.reside-property.com](http://www.reside-property.com)