



Bradford Road, Brownhills

 3

 2

 2

OIRO £195,000



Key Features

- Popular location
- In need of modernisation
- End Terrace
- Driveway
- Large rear garden
- Lounge
- EPC rating D
- Freehold
- Council tax band B





*****SPACIOUS 3 BED End Terraced house - IDEAL MODERNISATION PROJECT****

Located in Brownhills, popular with families and commuters with good local schools, the High Street with its many shops, supermarkets and transport links to the M6 motorway and M6 toll road, Aldridge, Cannock, Lichfield and Walsall. For nature lovers, close by are the Brownhills Commons, the nature reserves of Chasewater and the immense Cannock Chase.

The spacious property briefly comprises of:

Driveway, large hall, lounge, dining room, kitchen/breakfast, utility room, downstairs shower room, large rear garden, three bedrooms, bathroom.

The property does require modernisation allowing the new owner to customise to their requirements.



Frontage

Driveway and garden area.

Hall

The property has two entrance doors, each with their own hall space. Understairs storage.

Lounge 4.14m x 5.18m (13.6ft x 17ft)

Spacious room with feature bay window. Ideal to relax in.

Dining Room 3.02m x 3.12m (9.9ft x 10.2ft)

Located between the lounge and kitchen.

Utility Room 1.72m x 1.6m (5.6ft x 5.2ft)

Having fitted wall units and plumbing for washing machine.

Downstairs shower room

Shower cubicle, basin and w.c.

Kitchen/breakfast room 4.06m x 3.12m (13.3ft x 10.2ft)

Fitted wall and base units and breakfast bar.

Bedroom One 4.14m x 3.25m (13.6ft x 10.7ft)

Double room with fitted wardrobes.

Bedroom Two 3.01m x 3.25m (9.9ft x 10.7ft)

Double room with fitted wardrobes.

Bedroom Three 3.02m x 2.12m (9.9ft x 7ft)

Located at the front of the property.

Bathroom 2.2m x 1.84m (7.2ft x 6ft)

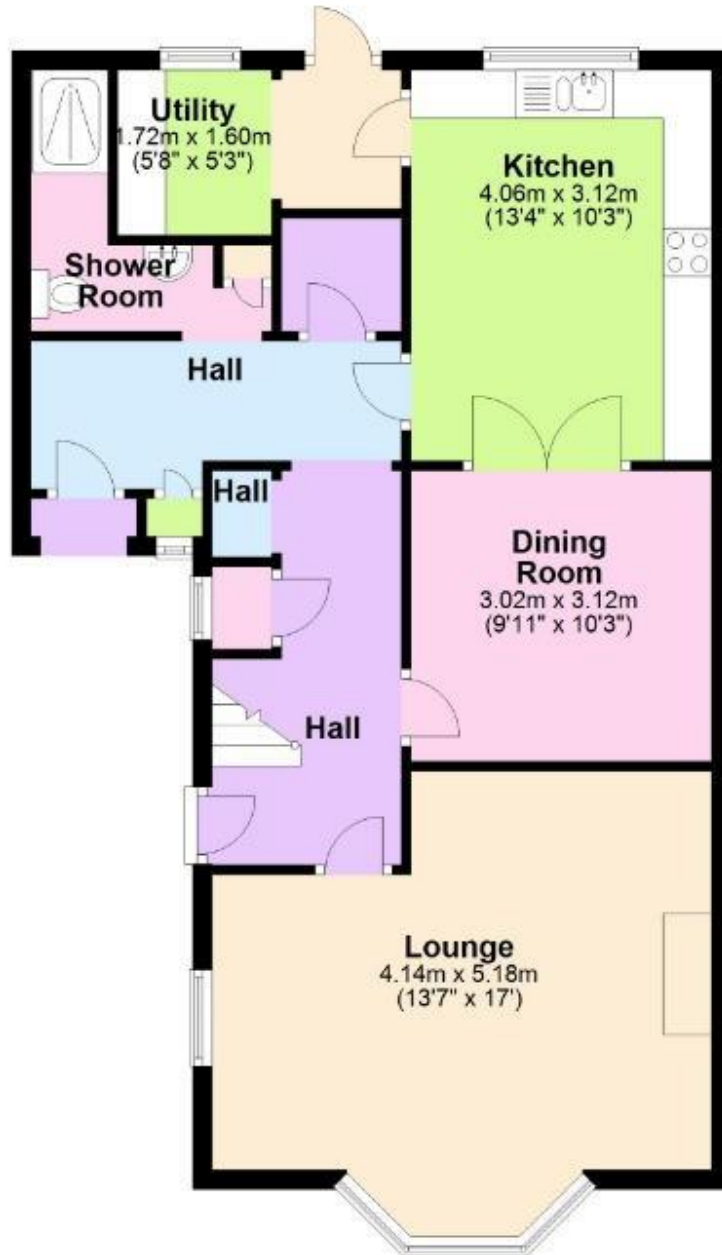
With corner cubicle, basin & w.c.





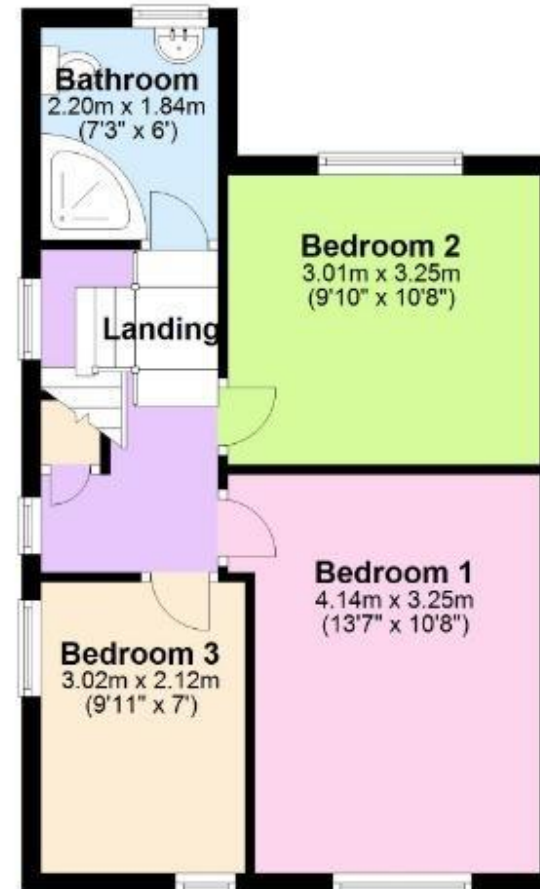
Ground Floor

Approx. 68.6 sq. metres (738.9 sq. feet)



First Floor

Approx. 40.4 sq. metres (434.6 sq. feet)



Total area: approx. 109.0 sq. metres (1173.5 sq. feet)

