



**Guide Price**  
**£200,000**

**Freehold**

1x  1x  1x 

**Kingfisher Road,  
Larkfield, Aylesford,  
Kent, ME20**

**OVER 60?**

Secure this property  
for up to **59% less!**

*Wards*  
Helping you move forwards



## Main features

- Presented in good condition throughout
- Sociable lounge/kitchen - ideal for today's modern lifestyle
- Pretty low maintenance rear garden to enjoy
- Great for commuters - rail stations & the M20 nearby
- Perfect home for a first time buyer or investors

## Accommodation

### GROUND FLOOR

Lounge/Kitchen: 18'10 x 9'8 (5.74m x 2.95m)

### FIRST FLOOR

Landing

Bedroom : 11'0 x 9'9 (3.36m x 2.97m)

Shower Room

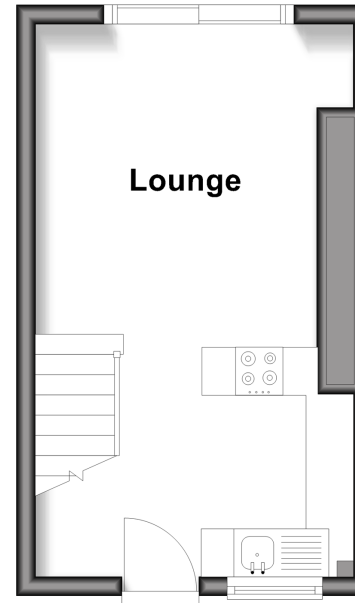
### OUTSIDE

Front & Rear Gardens

Allocated Parking Space

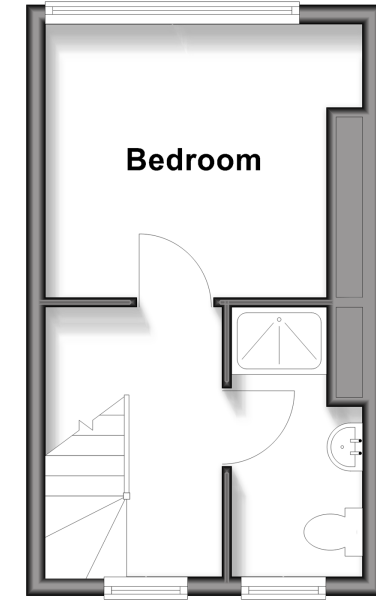
## Ground Floor

Approx. 19.3 sq. metres (207.5 sq. feet)



## First Floor

Approx. 19.3 sq. metres (207.5 sq. feet)



Call Larkfield - 01732 847877 ■ [wardsokent.co.uk](http://wardsokent.co.uk)

■ Through a Homewise Home For Life Plan people aged 60+ can secure this property for up to 59% less, by purchasing a Lifetime Lease



12933836/20260402/BB/HS1