



## Queenstown Road, SW8

£2,200 Per calendar month

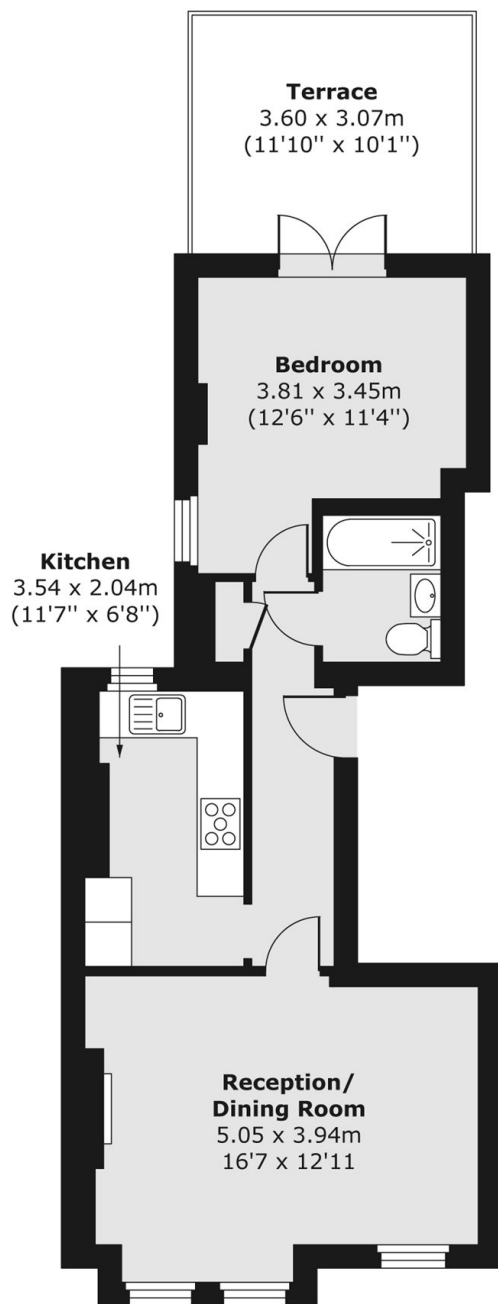
Located on the desirable Queenstown Road, this well-presented flat offers a spacious reception room, a generous double bedroom and access to a private terrace.

Queenstown Road is conveniently located close to both Queenstown road and Battersea park stations, offering excellent transport links into central London. The area also benefits from a variety of local shops, cafés and amenities nearby.

### Features

- One Double Bedroom
- Large Reception Room
- Wooden Flooring
- Private Terrace
- Well-Maintained Building
- Great Location

# Queenstown Road, London, SW8



Total area (approx.) 46.33 sq. m (499 sq. ft)  
Terrace area (approx.) 11.05 sq. m (119 sq. ft)