



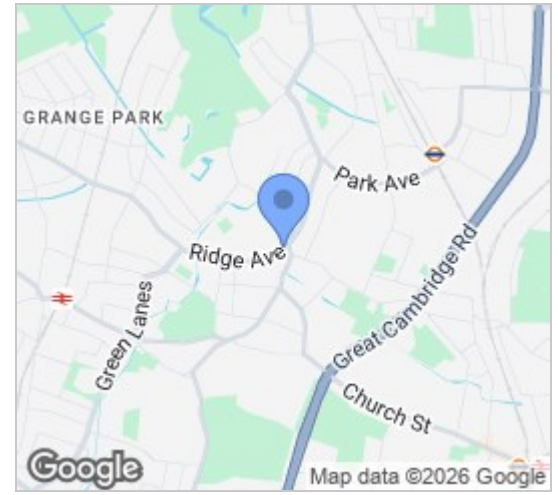
Ridge Avenue, Winchmore Hill, London

£2,350 Per Month

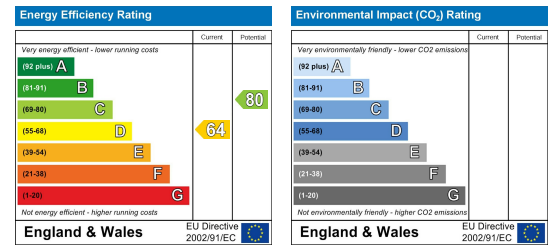
Floor Plan



Area Map



Energy Efficiency Graph



Viewing

Please contact our Homelink Lettings & Estates Office on 0208 882 2112 if you wish to arrange a viewing appointment for this property or require further information.

- Three bedroom Maisonette
- Newly refurbished
- Newly installed kitchen
- Newly installed three piece family bathroom
- Close to Bush Hill station
- Available now
- Ideal for working professional's
- Close to schools
- Close to local shops
- Must see.

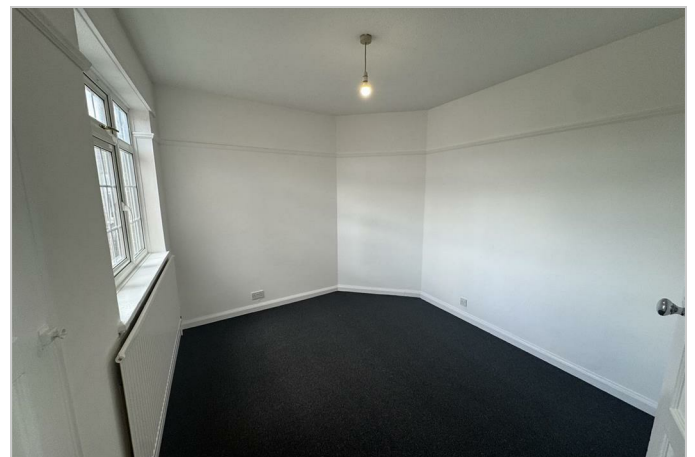
Nestled in the charming area of Winchmore Hill, this newly refurbished three-bedroom split-level maisonette on Ridge Avenue presents an excellent opportunity for working professionals seeking a modern and comfortable living space.

Upon entering, you will be greeted by a bright and inviting reception room, perfect for relaxation or entertaining guests. The newly fitted kitchen boasts contemporary appliances and ample storage, making it a delightful space for culinary enthusiasts. The three well-proportioned bedrooms offer versatility, whether you require a home office or guest accommodation.

The property is designed with modern living in mind, ensuring that every corner is both functional and stylish. With one well-appointed bathroom, this maisonette caters to the needs of a busy lifestyle while providing a serene retreat at the end of the day.

Available for rent now, this flat is ideally situated for those who commute, with excellent transport links and local amenities within easy reach. Experience the perfect blend of comfort and convenience in this delightful home. Don't miss the chance to make this splendid maisonette your new residence.

Council tax band - D - Enfield Council - £1,923.57 -25/26



These particulars, whilst believed to be accurate are set out as a general outline only for guidance and do not constitute any part of an offer or contract. Intending purchasers should not rely on them as statements of representation of fact, but must satisfy themselves by inspection or otherwise as to their accuracy. No person in this firm's employment has the authority to make or give any representation or warranty in respect of the property.

Homelink Lettings and Estates
62 Chase Side, London N14 5PA
0208 882 2112 homelink.co.uk

