

Flat 26, High Point Richmond Hill Road, Birmingham

£280,000 Leasehold

Hadleigh Estate Agents are delighted to offer this three bedroom ground floor apartment for sale. Offered with NO UPWARD CHAIN this spacious three bedroom apartment is located within the sought after development High Point located on Richmond Hill Road, Edgbaston.

With secure entrance on the ground floor this property comprises of a spacious entrance hall, three double bedrooms with built in storage, bathroom, kitchen and living / dining room with access onto the rear terrace. The ground floor apartment further benefits from having its own garage en-bloc.





Location

High Point is conveniently located for easy access onto Harborne High Street, offering an array of bars, restaurants and local supermarkets. Edgbaston Village is close at hand, along with excellent transport links into Birmingham City Centre. A short walk away is The University of Birmingham and Queen Elizabeth Hospital with a number of local independent and private schools close at hand.

Entrance Hall

Spacious entrance hallway with storage cupboards, carpeted flooring and ceiling light point. Giving access to bedroom one, living room and kitchen.

Lounge Diner

Extensive lounge diner, boasting UPVC double glazed windows and patio door leading to your own patio area. Two wall lights, ceiling light point and ceiling rose, carpeted flooring and electric heaters.

Kitchen

Fitted kitchen with a range of base and wall units, plumbing for utilities and cooker. Tiled flooring, stainless steel sink and drainer unit and double glazed window.

Bedroom One

Large double bedroom offering fitted wardrobes, double glazed windows, carpeted flooring and electric heater.





Bedroom Two

Boasting a further large double bedroom, complete with fitted wardrobes, double glazed windows, electric heater and ceiling light point.

Bedroom Three

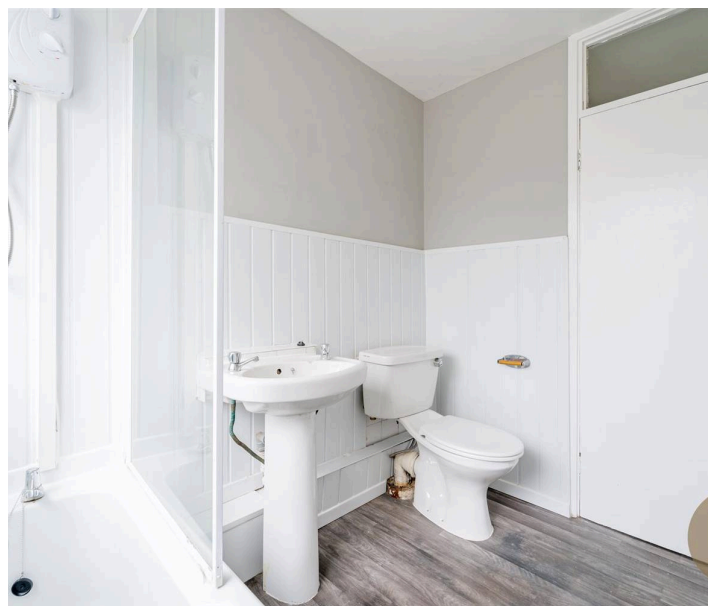
Double bedroom with double glazed windows to the front elevation, carpeted flooring, built in wardrobes and electric heater.

Bathroom

Modern fitted bathroom with bath and electric shower over. Low level flush WC, hand wash basin and electric towel radiator. Ceiling light point and opaque glazed window.

External

The apartment has access to its own patio area, along with private garage and shared access of the communal grounds.



Council Tax band: D

Tenure: Leasehold

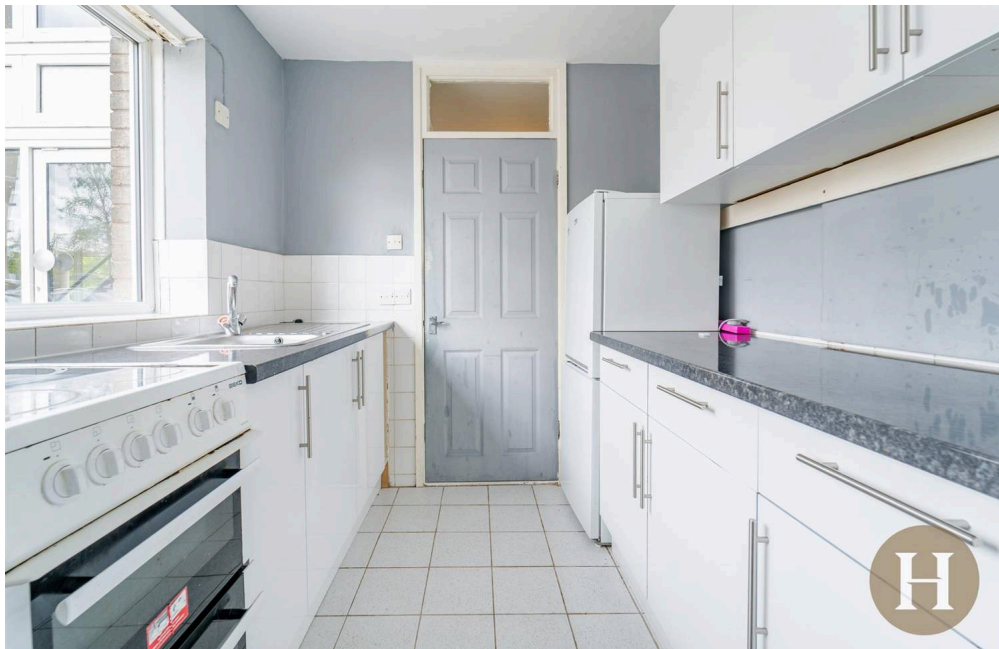
Years Remaining: 123

Service Charge PA: £2,392.64

Ground Rent PA: £0

EPC Energy Efficiency Rating: D

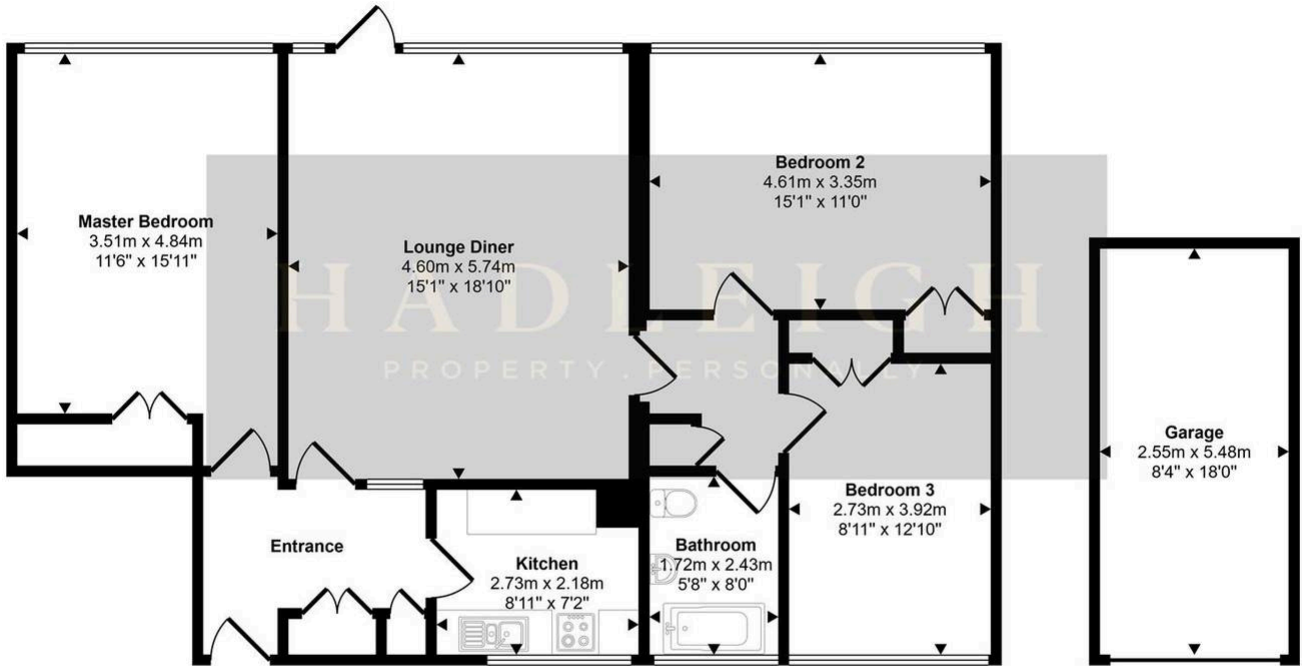
EPC Environmental Impact Rating: E



- › Ground floor three bedroom apartment in High Point
- › No upward chain
- › Spacious lounge/diner with rear terrace access
- › Three double bedrooms with built-in storage



Approx Gross Internal Area
114 sq m / 1222 sq ft



Floorplan
Approx 99 sq m / 1071 sq ft

Garage
Approx 14 sq m / 150 sq ft

This floorplan is only for illustrative purposes and is not to scale. Measurements of rooms, doors, windows, and any items are approximate and no responsibility is taken for any error, omission or mis-statement. Icons of items such as bathroom suites are representations only and may not look like the real items. Made with Made Snappy 360.