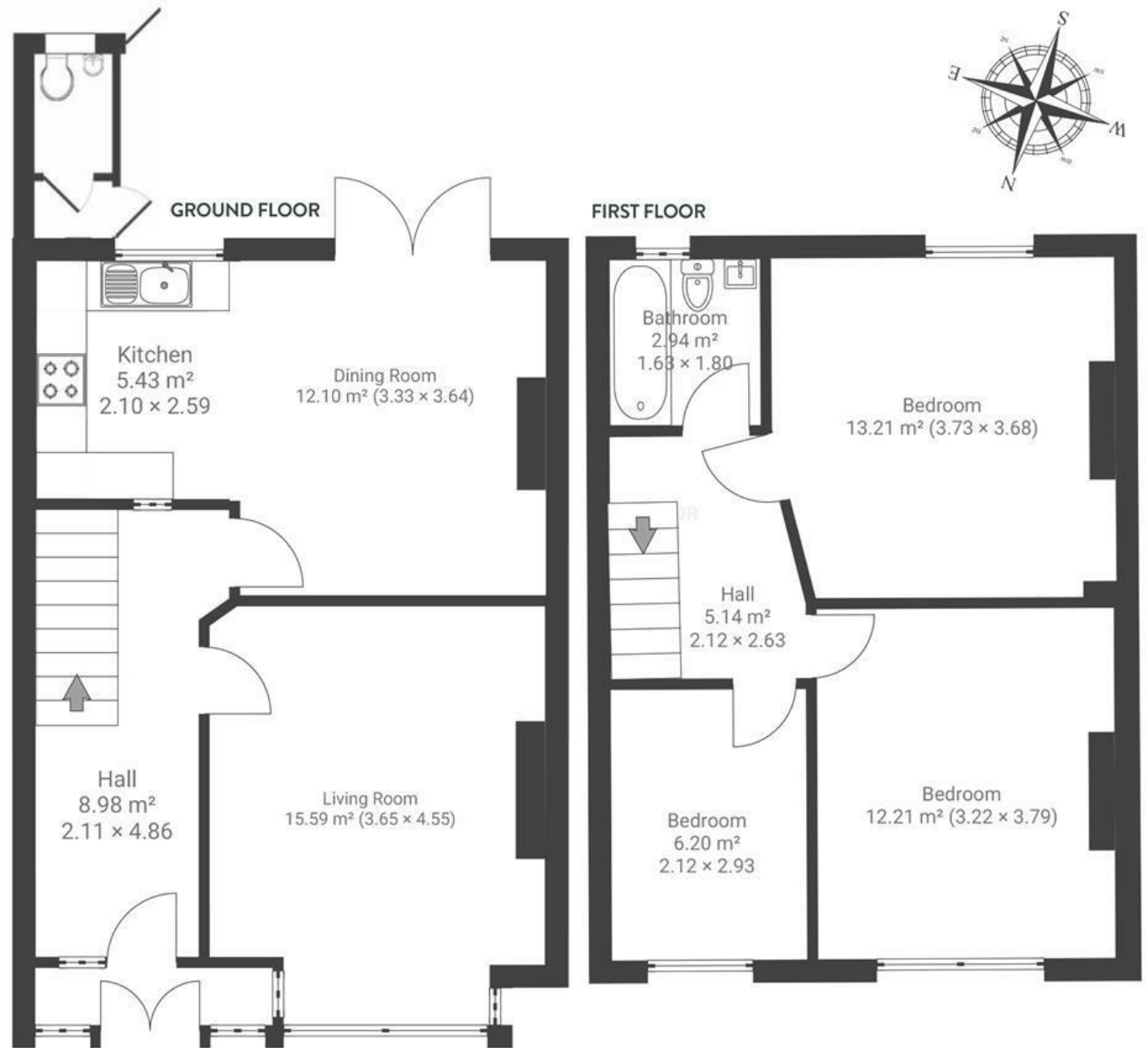


Maple Road HORFIELD

APPROXIMATE FLOOR AREA
87 SQM / 936 SQFT



Boardwalk

Maple Road , BRISTOL



£575,000



3 Bedrooms



BS7 8RG



1 Bathrooms

"Maple Road is a fantastic place to live, it's such a friendly community and only a few steps away from the Ardagh and Horfield Common with cafe, children's playground, community sauna and lots of space to chill on the grass. Gloucester road is also just a short walk away we especially like Joe's bakery and Fed. No 86 has a superb elevated position, South facing garden and views across Bristol to Kelston Hill. Its a lovely home and we're looking forward to somebody else making it their own."

