

Property ref: 50890

Kings Road, Reading, RG1 4FE

£1,200 PCM



A well presented fourth floor apartment located to the east side of Reading town centre with good access to local bus routes and within

- Double bedroom

walking distance to both the town centre and train station.
Reading Borough Council tax band B.
Water supply: Mains
Drainage info: Mains
Electricity supply: Mains
Broadband/Mobile Info: Connections available. For an indication of specific speeds and supply of Broadband and Mobile, we advise applicants go to the Ofcom website Broadband and Mobile Coverage Checker.

- Fully fitted kitchen with appliances
- Large shower
- Electric heating
- Allocated parking; Lift; Furnished
- EPC Rating C; Managed by LANDLORD

Available 12/06/2026

*Fees For Assured Shorthold Tenancies: when you rent a property from us you will be required to pay a sum equivalent to one weeks' rent for a holding deposit. Upon successful application, this amount will be off set against your first months' rent. You will also be required to pay a security deposit equivalent to 5 weeks' rent which will be held and protected in line with Deposit legislation. For more information about our fees please visit: www.haslams.net
Fees for all other tenancies (Non Housing Act Tenancies / Company Lets): when you rent a property from us we will charge you a one-off fee per property. This charge is the equivalent of 15 days of the monthly rental charge (+VAT) with a minimum fee of £450 (inc.VAT) up to a maximum of £650 (inc.VAT). Other fees may apply depending on your circumstances.

0118 960 1055

lettings@haslams.net www.haslams.net

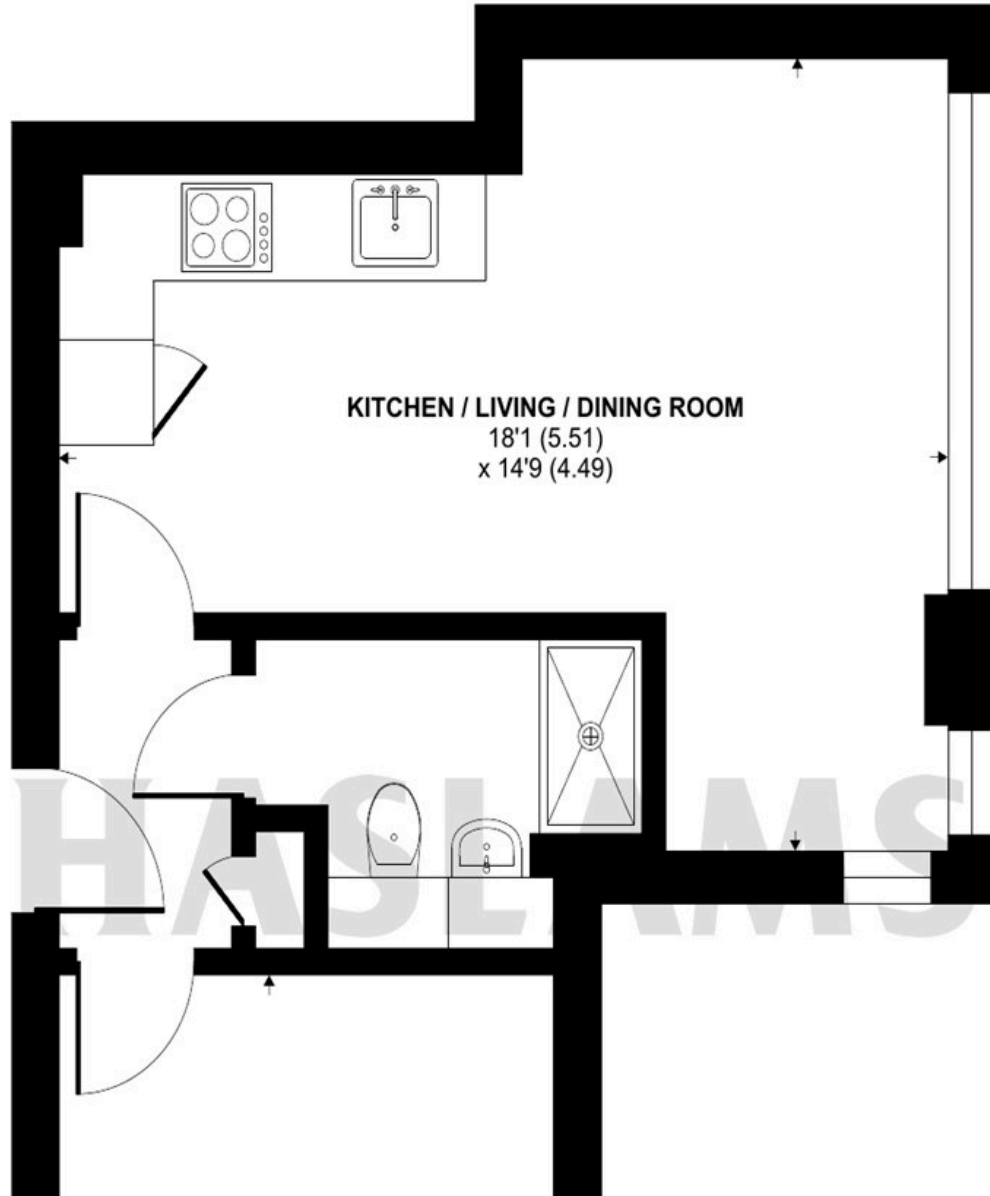
Haslams Estate Agents Ltd, 159 Friar Street, Reading, Berkshire, RG1 1HE

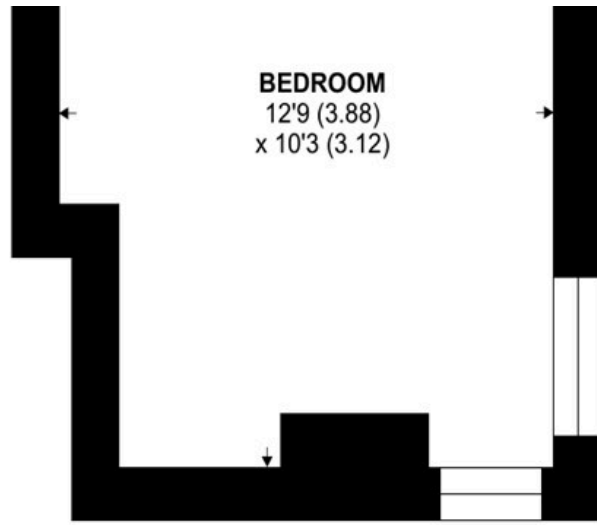


Kings Road, Reading, RG1

Approximate Area = 402 sq ft / 37.3 sq m

For identification only - Not to scale





THIRD FLOOR



Floor plan produced in accordance with RICS Property Measurement 2nd Edition, Incorporating International Property Measurement Standards (IPMS2 Residential). © nchecon 2026. Produced for Haslams. REF: 1446052