



## Halliford Road, TW16

£749,950

A spacious five-bedroom semi-detached family home spanning nearly 2,000 sq.ft, offering versatile living across two floors. Brimming with potential, it's a rare opportunity to create a stunning, bespoke home tailored perfectly to your lifestyle.

Halliford Road is ideally situated within close proximity to the River Thames, Lower Sunbury's village amenities and its famous 'Walled Garden'. Sunbury and Upper Halliford stations are only a few minutes' drive with direct access into Kingston and London Waterloo stations.

### Features

- Semi-Detached
- Double Storey Extended
- Five Bedrooms
- Four Bathrooms
- Utility room
- Off-Street Parking



## Halliford Road, TW16

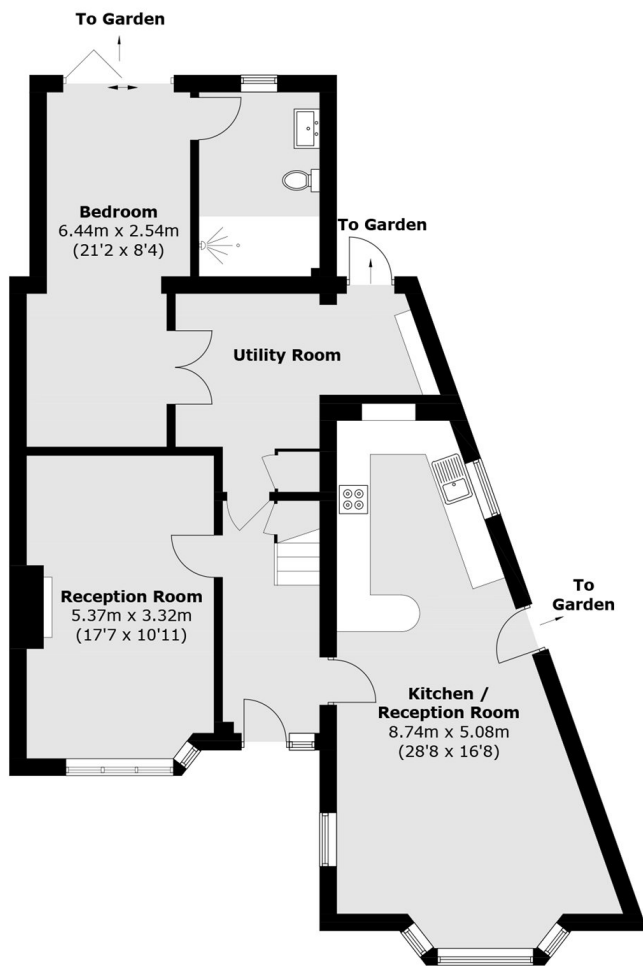
Having been enhanced by a substantial double-storey extension, this impressive residence now offers close to 2,000 sq.ft of beautifully adaptable living space ideal for growing families, multi-generational living, or those seeking the perfect work-from-home environment.

The ground floor unfolds with a warm and inviting living room, complete with a charming bay window and striking feature fireplace. To the rear, a generous open-plan kitchen and dining space creates the true heart of the home. Perfect for entertaining and everyday family life complemented by a spacious utility room.

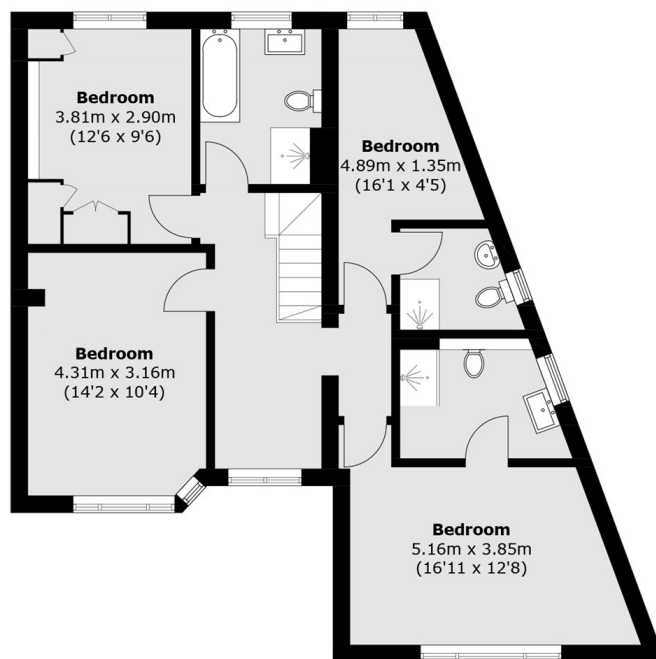
A versatile ground-floor bedroom suite, featuring its own reception area and sleek en suite bathroom, provides exceptional flexibility for guests, independent living, or a private office setup. Upstairs, four well-proportioned bedrooms are served by three contemporary bathrooms, two of which are en suite, ensuring comfort and convenience throughout. Externally, the property benefits from off-street parking and a secluded walled rear garden. Early viewing is highly recommended.



# Halliford Road, Sunbury-On-Thames, TW16



**Ground Floor**



**First Floor**

Total area (approx.): 178.1 sq. m (1,917.1 sq. ft)