



Dalmeny Road, N7

£500,000

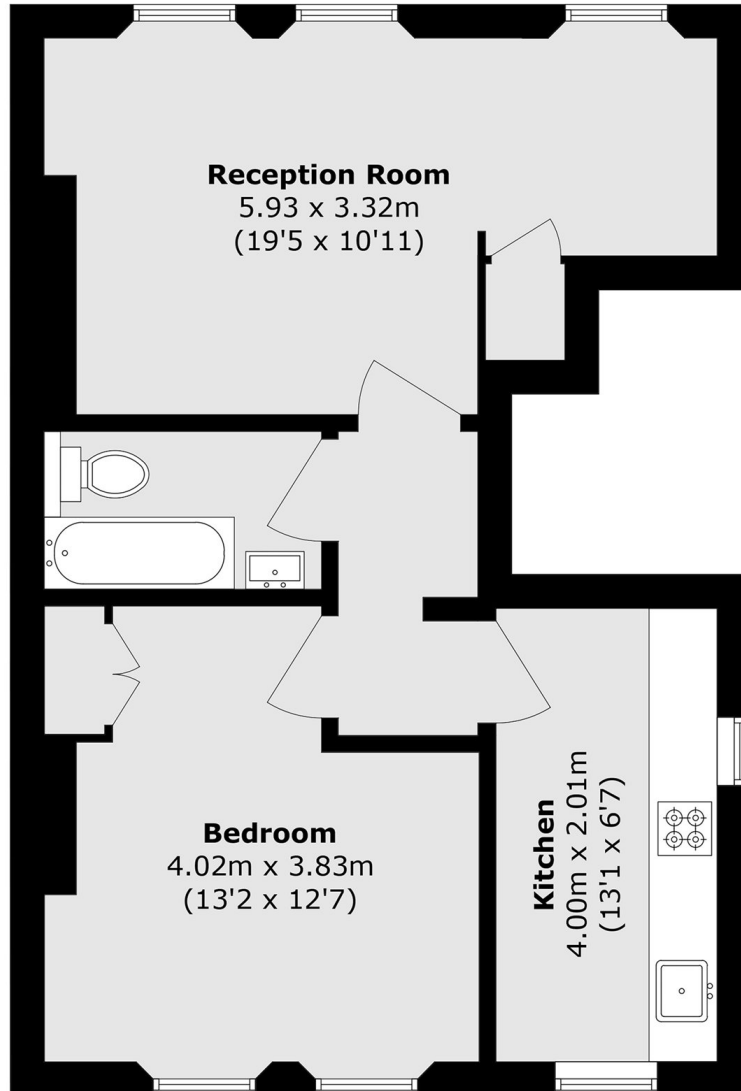
A lovely one double bedroom first floor flat located in the heart of Tufnell Park. The property offers a refurbished living space, a separate modern kitchen, large windows and ample storage throughout.

Dalmeny Road is located close to the green spaces of Dalmeny Park, with Hampstead Heath and Tufnell Park playing fields also nearby. Tufnell Park station (Northern line) is approximately 0.4 miles away.

Features

- One Double Bedroom
- Recently Refurbished
- Period Conversion
- First Floor Flat
- Permit Parking
- Leasehold

Dalmeny Road, London, N7



Total area (approx.): 47.8 sq. m (514.5 sq. ft)