

Hurlingham Business Park, SW6

£3,400 Per week

This two bedroom loft style flat is on the first and second floors of this modern conversion. The property has fantastic natural light and offers great space throughout, a semi open plan reception with high ceilings and an integrated modern kitchen with space for dining.

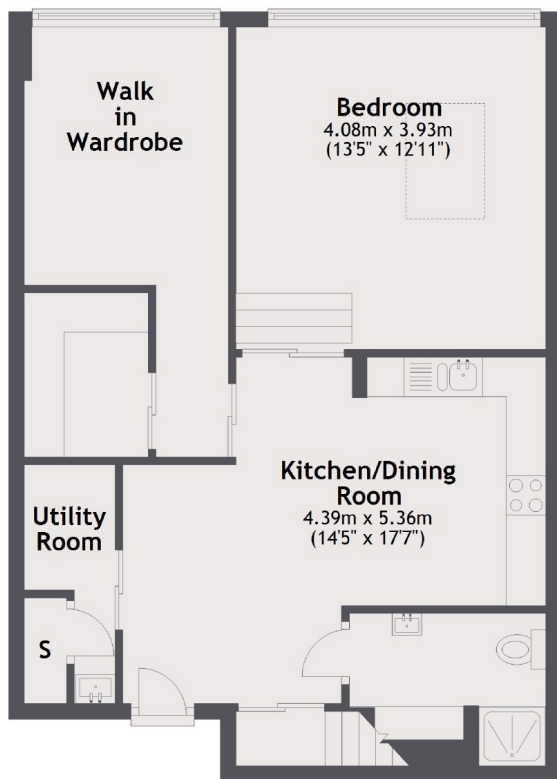
The property is off Sullivan Road, with good access to local amenities on Wandsworth Bridge Road, Parsons Green and on Fulham Broadway. South Park and Hurlingham Park are close by and you have a variety of bus routes leading into Chelsea and the city.

Features

- Open-Plan
- Two Bedrooms
- Two Bathrooms
- Off Street Parking
- Secure Development
- Integrated Kitchen

Hurlingham Business Park, Fulham, SW6

Ground Floor



First Floor

Total area: approx. 94.6 sq. metres (1018.3 sq. feet)