



📍 86 Bradford Road, Atworth, Melksham, Wiltshire County, SN12 8HY

🏠 Price Guide £385,000

- Period Terraced Property
- 2 Double Bedrooms
- Very Well Presented Throughout
- Large Living Room
- Large Kitchen Dining Room
- Wonderful Village Location
- Private Garden And Outbuilding/Office With Power And Light
- No Onward Chain

🏠 Freehold

🏠 EPC Rating D



This immaculately presented and sizeable 2 bedroom cottage, sold with no onward chain is located in the prettiest part of "old" Atworth, itself a delightful village. The property to the front has a canopied storm porch which leads directly to the main living room with shallow and enclosed stairs to the first floor, dual aspect windows front and rear, a fireplace with log burner and a door and steps down to the kitchen dining room. This large spacious and quirky room is light and airy with two windows to the front and is fitted with a range of shaker style base units and built in appliances which include an electric oven and hob, dishwasher as well as space for a washing machine and fridge freezer and useful shelved larder for additional storage, wood effect laminate flooring and a door to the rear garden. The combination boiler is located in a purpose built cupboard. Off the landing are the two bedrooms, both double and at opposite ends of the cottage, the main being a particularly good size with built in wardrobes and steps from the landing. There is also a separate quality cloakroom with sink and shower room with double shower and a further sink. The property is double glazed and heated by a mains gas fired heating system. Externally there is a pretty front garden enclosed by a stone wall and laid to stone chippings with a path to the front door. The rear garden is well maintained with low maintenance gravel and stepping stones and a number of attractive and established trees bushes and shrubs. At the far end of the garden, a shared path leads to the stone outhouse which has been converted to a superb work from home office with power, light and slate roof. Continue on the path past this building and there is a further private courtyard laid to patio and a real sun trap. The property has right of access to the garden and back door, this path passes Fuchsia Cottage, No 85 also has access over number 86 for entry to the rear of their home.

#### Atworth

Atworth is a popular and sought after village surrounded by beautiful countryside and is approximately three miles from Corsham. The village offers a number of amenities including a public house, church, infant and primary school, garage / convenience store and, the superb Lowden Garden Centre with café. A short from the property itself leads to the play ground. There are further shops and facilities in the nearby towns of Bradford on Avon, Chippenham and Melksham provide a more comprehensive range of shopping facilities, schools and services. Atworth has good transport links to the M4 junction 17 and is within easy commuting distance of Bath (c.9 miles), Bristol and Swindon with regular buses running through the village. Rail services are available at Bath, Melksham and Chippenham providing hourly services to London Paddington.

#### Property information

Council Tax Band: C

Gas Fired Central Heating

EPC Rating: D

Wonderful Village Location

No Onward Chain

Pretty Gardens And Outbuilding/Office



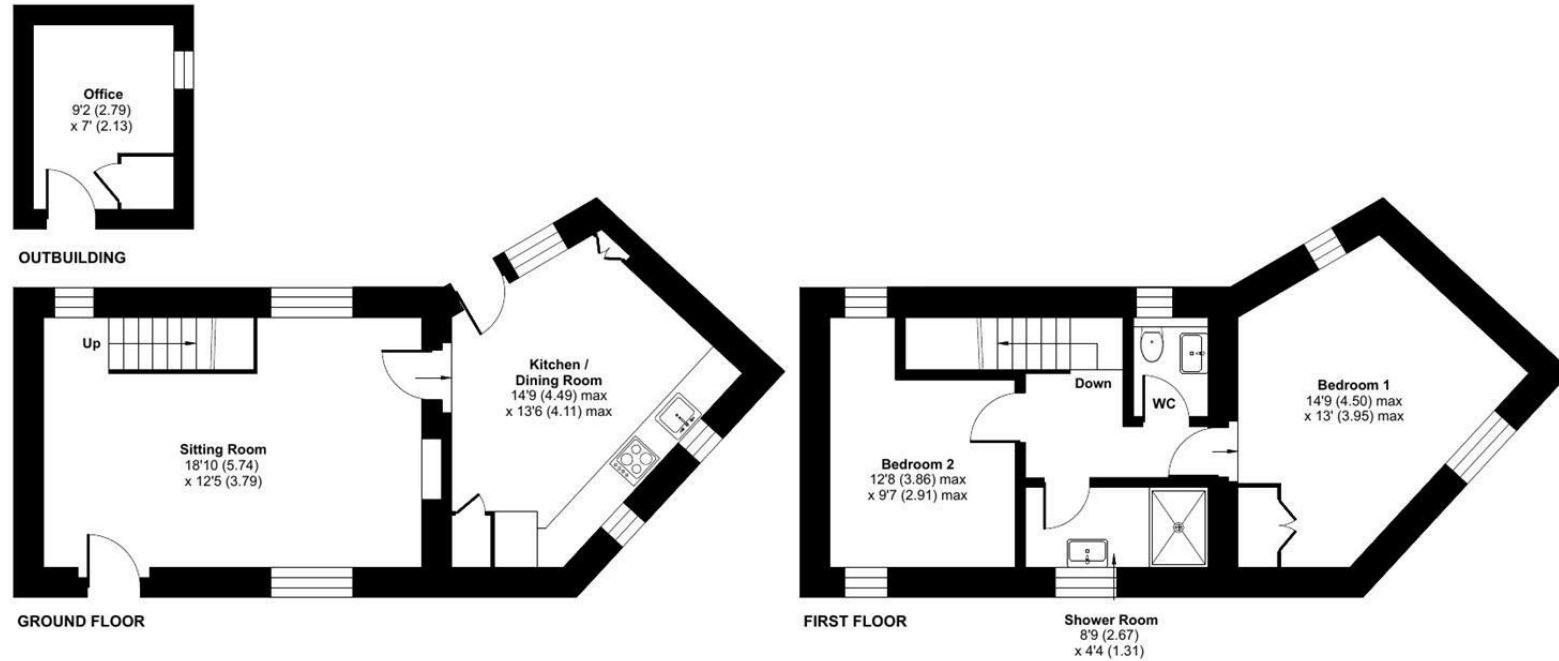
# Bradford Road, Atworth, Melksham, SN12

Approximate Area = 816 sq ft / 75.8 sq m

Outbuilding = 64 sq ft / 5.9 sq m

Total = 880 sq ft / 81.7 sq m

For identification only - Not to scale



 Floor plan produced in accordance with RICS Property Measurement 2nd Edition, Incorporating International Property Measurement Standards (IPMS2 Residential). © ntechcom 2026. Produced for Strakers. REF: 1454487

Disclaimer These particulars, whilst believed to be accurate are set out as a general outline only for guidance and do not constitute any part of an offer or contract. Intending purchasers should not rely on them as statements of representation of fact, but must satisfy themselves by inspection or otherwise as to their accuracy. No person in this firm's employment has the authority to make or give any representation or warranty in respect of the property. All measurements and distances are approximate only. Your home is at risk if you do not keep up repayments on a mortgage or other loan secured on it.