

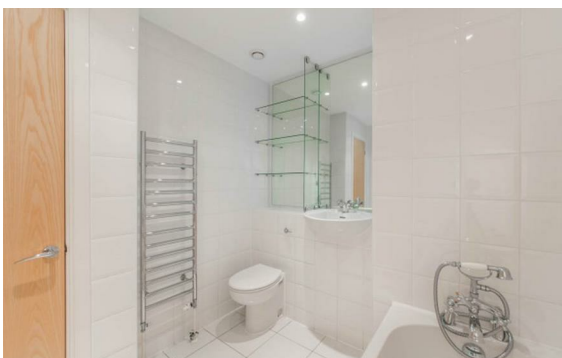
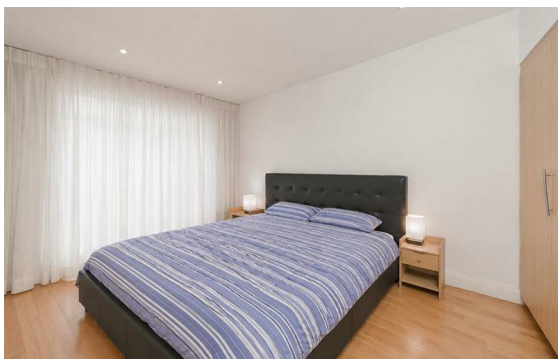
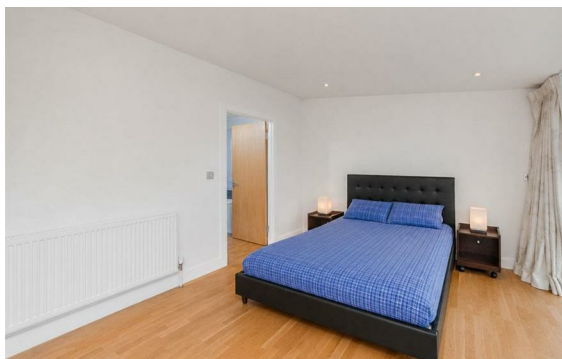


**Allsop Place, Marylebone, London, NW1**

Rent £1,000 PCM

2 Bed | 2 Bath | 1 Reception

*Please call us on 020 7724 2233 or email us [info@newingtonstates.com](mailto:info@newingtonstates.com) to book a viewing.*



A well-presented two-bedroom apartment offering generous living space and modern finishes in a sought-after Marylebone location. The property features a bright reception room, a modern fitted kitchen with integrated appliances, and two well-proportioned double bedrooms. Two bathrooms provide added convenience, while a private balcony/terrace offers valuable outdoor space. Large windows enhance the natural light throughout.

Residents benefit from lift access, porter service, and heating and hot water included within the rent. Ideally located close to Baker Street Station and Marylebone Station, with Regent's Park and local amenities nearby.

EPC Rating: C

## Energy Efficiency Rating: C

Agents Note: Whilst every care has been taken to prepare these particulars, they are for guidance purposes only. All measurements are approximate and are for general guidance purposes only and whilst every care has been taken to ensure their accuracy, they should not be relied upon and potential buyers/tenants are advised to recheck the measurements.

**NEWINGTON**  
— ESTATES —

60 Upper Montagu Street

London

W1H 1SN

020 7724 2233

[info@newingtonstates.com](mailto:info@newingtonstates.com)

<http://www.newingtonstates.com>