



3 Marlowe Court, King Street, Canterbury, Kent, CT1 2AL

£1,250 PCM

- FLAT
- 2 BEDROOMS
- 1 RECEPTION ROOMS
- NO CHILDREN
- NO GARDEN
- CLOSE TO CITY CENTRE
- UNFURNISHED PROPERTY
- 1 BATHROOMS
- SORRY, NO SMOKERS
- NO PETS ALLOWED

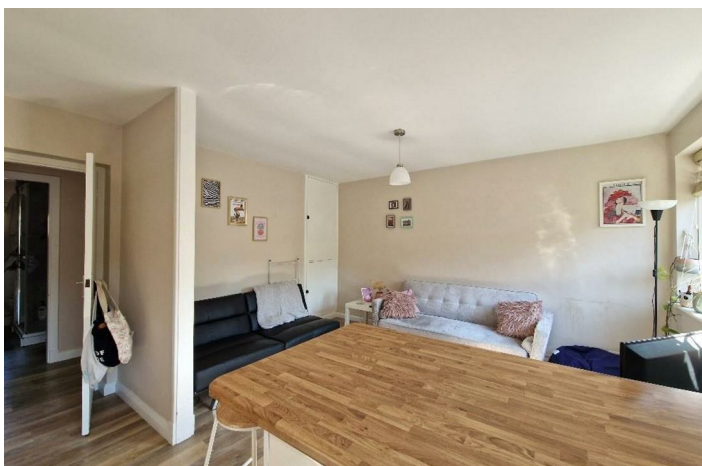
3 Marlowe Court, Canterbury CT1 2AL

This first floor apartment is ideally situated for the town centre. The good sized accommodation is available unfurnished and has good storage. The accommodation comprises an entrance hall, a lounge area with views over the Cathedral, the kitchen is fitted with white goods including a dishwasher, fridge with ice box, electric hob and oven and washing machine. Both bedrooms are doubles, one is slightly larger with a built in wardrobe. The shower room is to be redecorated at the end of the tenancy.

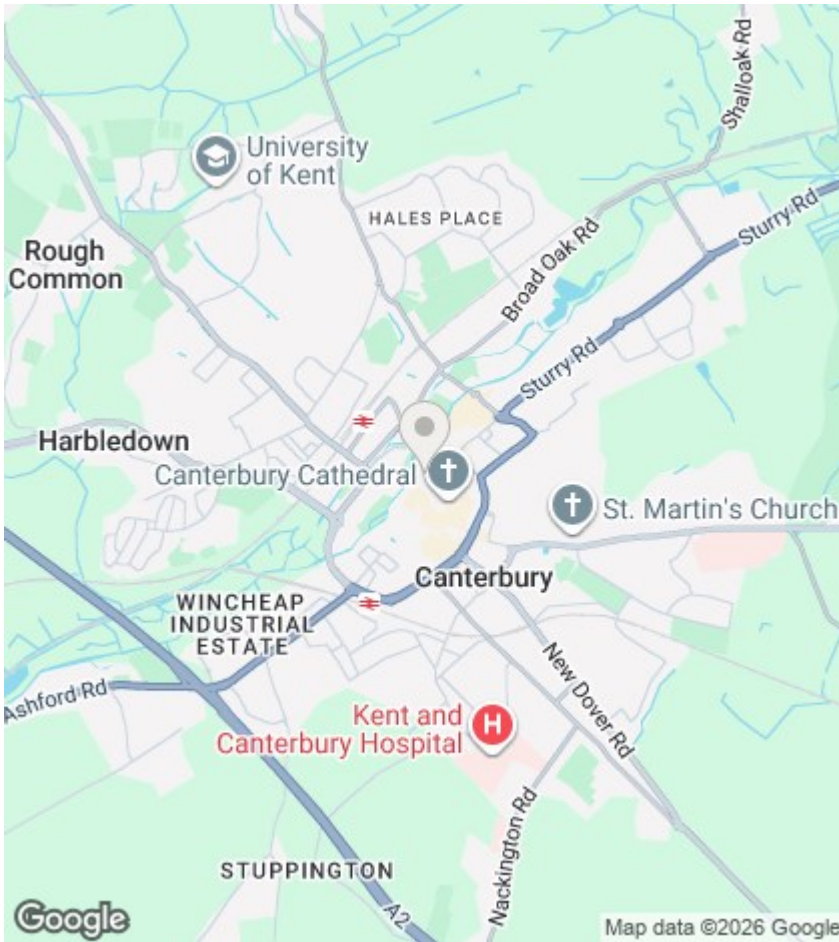
Situated in a quiet location within the St Radiguns area of the City, this property is ideal for working professionals or mature post graduate students. Both East and West train stations are within easy walking distance. Council Tax Band C.



Council Tax Band: C







Directions

Viewings

Viewings by arrangement only. Call 01634 576000 to make an appointment.

EPC Rating:

D

Energy Efficiency Rating		Current	Potential
Very energy efficient - lower running costs			
(92 plus) A			
(81-91) B			
(69-80) C			78
(55-68) D		59	
(39-54) E			
(21-38) F			
(1-20) G			
Not energy efficient - higher running costs			
England & Wales		EU Directive 2002/91/EC	