



Granby Place, Leeds LS6 3BD

welcome to

Granby Place, Leeds

This well-presented four-bedroom terraced property offers deceptively spacious accommodation across multiple levels, making it an ideal choice for families seeking comfort and flexibility



Lounge

17' 11" max x 13' 8" max (5.46m max x 4.17m max)

A bright and inviting lounge featuring a sleek laminated floor, a radiator for year-round comfort, and a front-facing window that floods the space with natural light. Furnished with stylish free-standing pieces, the room offers versatility and a modern touch—perfect for relaxing or entertaining in comfort.

Kitchen

17' 11" max x 13' 8" max (5.46m max x 4.17m max)

A stylish and functional kitchen featuring a sleek grey matt finish throughout, complemented by durable laminate flooring for easy upkeep. The space includes a modern electric hob and oven, along with free-standing appliances that offer flexibility and convenience. A front-facing window provides natural light, brightening up the workspace, while the one-bowl metal sink is set against classic white metro tiles for a timeless touch. Finished with elegant quartz worktops, this kitchen blends contemporary design with everyday practicality.

Bedroom 1 (basement)

13' 4" max x 12' 3" max (4.06m max x 3.73m max)

A cosy double bedroom tucked away in the basement, featuring soft carpeted flooring for added warmth and comfort. Natural light filters in through a high-set window, accessible via built-in ladder steps, adding character to the space. The room includes a built-in cupboard and ample room for free-standing furniture, making it both functional and inviting.

Ensuite (basement)

A well-appointed ensuite bathroom situated in the basement, featuring stylish tiled floors and walls for a modern, easy-to-clean finish. The space includes a sleek square shower enclosure with an extractor fan for ventilation, plus a radiator for added warmth. You'll also find a pedestal sink, toilet, and a built-in cupboard housing the boiler, providing both

functionality and comfort in one neatly designed space.

Bedroom 2

13' 9" max x 8' 1" max (4.19m max x 2.46m max)

A spacious double bedroom featuring plush carpeted flooring for warmth and comfort. The front-facing window allows plenty of natural light to brighten the space, while a radiator ensures a cosy atmosphere year-round. With room for free-standing furniture, this bedroom offers both style and flexibility

Bedroom 3 (attic)

9' 6" max x 8' 4" max (2.90m max x 2.54m max)

A charming double bedroom nestled in the attic, featuring soft carpeted flooring and a front-facing window that brings in natural light. The space includes a built-in cupboard for handy storage, a radiator for year-round comfort, and plenty of room for free-standing furniture, offering flexibility in layout and design. A cosy retreat with character.

Bedroom 4 (attic)

13' 8" max x 10' 10" max (4.17m max x 3.30m max)

A charming double bedroom nestled in the attic, featuring soft carpeted flooring and a front-facing window that brings in natural light. The space includes a built-in cupboard for handy storage, a radiator for year-round comfort, and plenty of room for free-standing furniture, offering flexibility in layout and design. A cosy retreat with character.

Bathroom

Bright and practical with lino flooring, a panelled bath with shower over, pedestal sink, toilet, radiator, and Velux window.

Parking

On street parking



view this property online williamhbrown.co.uk/Property/HEA109179



welcome to

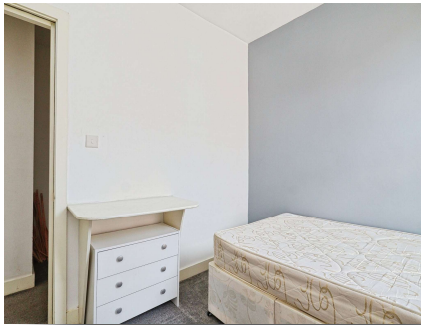
Granby Place, Leeds

- GUIDE PRICE £240,000 - £250,000
- 4 Bedroom Terraced House
- On Street Parking
- Great Transport Links To Leeds City Centre
- 10 Years Letting History

Tenure: Freehold EPC Rating: D
Council Tax Band: B

guide price

£240,000



Please note the marker reflects the
postcode not the actual property

view this property online williamhbrown.co.uk/Property/HEA109179



Property Ref:
HEA109179 - 0007

1. MONEY LAUNDERING REGULATIONS Intending purchasers will be asked to produce identification documentation at a later stage and we would ask for your co-operation in order that there is no delay in agreeing the sale. 2. These particulars do not constitute part or all of an offer or contract. 3. The measurements indicated are supplied for guidance only and as such must be considered incorrect. Potential buyers are advised to recheck measurements before committing to any expense. 4. We have not tested any apparatus, equipment, fixtures or services and it is in the buyers interest to check the working condition of any appliances. 5. Where an EPC, or a Home Report (Scotland only) is held for this property, it is available for inspection at the branch by appointment. If you require a printed version of a Home Report, you will need to pay a reasonable production charge reflecting printing and other costs. 6. We are not able to offer an opinion either written or verbal on the content of these reports and this must be obtained from your legal representative. 7. Whilst we take care in preparing these reports, a buyer should ensure that his/her legal representative confirms as soon as possible all matters relating to title including the extent and boundaries of the property and other important matters before exchange of contracts.

William H Brown is a trading name of Sequence (UK) Limited which is registered in England and Wales under company number 4268443, Registered Office is Cumbria House, 16-20 Hockliffe Street, Leighton Buzzard, Bedfordshire, LU7 1GN. VAT Registration Number is 500 2481 05.



william h brown



0113 278 5337



Headingley@williamhbrown.co.uk



1a Arndale Centre, Otley Road, LEEDS, West
Yorkshire, LS6 2UE



williamhbrown.co.uk