

Camberwell New Road, SE5

£650,000

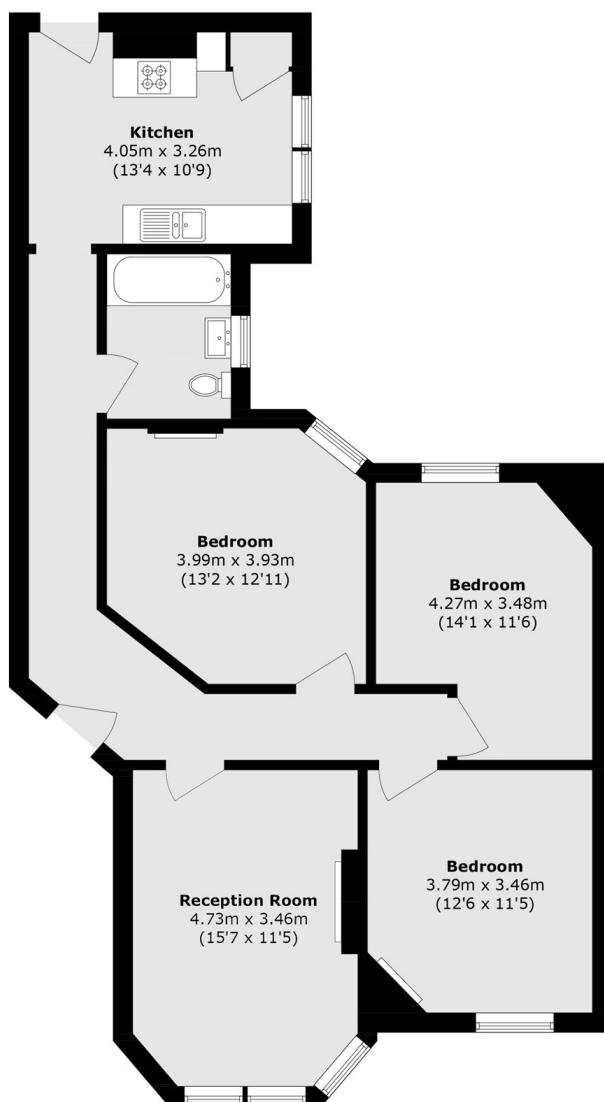
A spacious and well presented three double bedroom ground floor mansion apartment. Benefitting from a share of the freehold and high ceilings, this well proportioned home has a large reception room with a feature fire place and large sash windows that draw in lots of natural light. The property also benefits from a separate kitchen which has access onto well kept communal gardens. Furthermore there is a modern bathroom, good storage throughout and the property is being sold with no onward chain.

Hayes Court is well located within walking distance of Oval underground station and there are frequent buses on the doorstep to the city and West End. You are also not too far from Camberwell's varied shops, bars, restaurants and the green spaces of Myatt's Fields Park.

Features

- Three Double Bedrooms
- No Onward Chain
- Communal Gardens
- Share Of Freehold
- Separate Kitchen
- Convenient Location

Camberwell New Road, London, SE5



Total area (approx.): 92.9 sq. m (1,000.0 sq. ft)