



## Keatley Place, Hospital Road, Moreton-In-Marsh

Guide Price £350,000



A beautifully presented two bedroom top floor apartment designed and built for the over 60's by McCarthy & Stone, situated a short level walk from the High Street and mainline rail station to Oxford/London. The light and airy property boasts penthouse style throughout, with balconies from the living room and bedrooms, you are surrounded by wonderful outlooks over the well maintained grounds and also picturesque fields extending towards Batsford House. The apartment comprises: entrance hall with video entry door system, storage/utility/boiler cupboard with washer dryer, spacious open plan sitting/dining room, a modern fitted kitchen with integrated appliances including fridge/freezer, electric oven, hob, microwave and a slimline dishwasher. Further along the hallway is a principal bedroom with walk-in wardrobe and en-suite bathroom, second double bedroom with wardrobes, and a large shower room with WC. The apartment also has double glazing, underfloor heating throughout, neutral décor, spectacular views, modern fittings and an allocated parking space.

There are some fabulous benefits to living in Keatley Place: A friendly House Manager on hand during the day, a 24 hour emergency call system, the 'Homeowners Lounge' with tea and coffee on hand so you can sit and chat with your new neighbours, a guest suite bookable for family and friends to stay overnight in and beautifully landscaped gardens to sit and enjoy without the worry of maintaining them.

EPC: C

Council Tax Band: E

Tenure: Leasehold

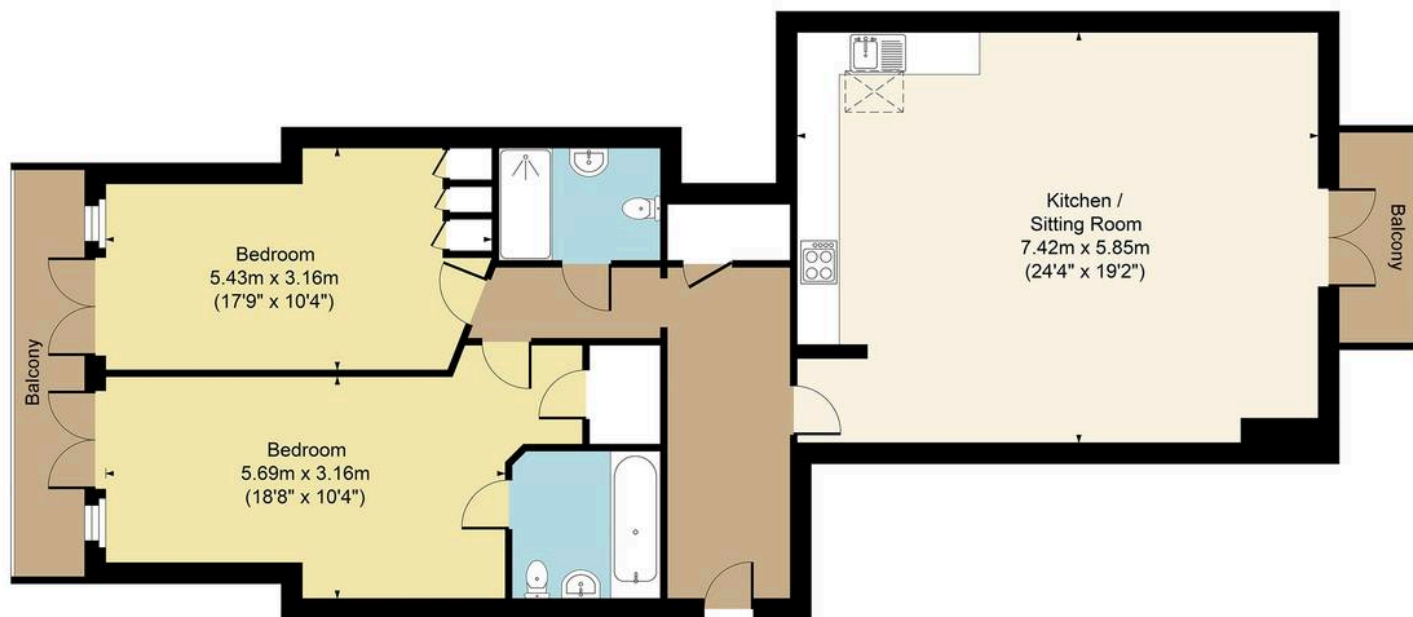
There is a ground rent of approximately £495 per annum and a service charge of approximately £442.31 per month. The maintenance charge includes the water.







Main House Approx. Gross Internal Area:- 102.0 sq.m. 1098 sq.ft.



FOR ILLUSTRATIVE PURPOSES ONLY-NOT TO SCALE  
The position & size of doors, windows, appliances and other features are approximate only.  
□ □ □ Denotes restricted head height  
[www.dmlphotography.co.uk](http://www.dmlphotography.co.uk)

High Street, Moreton-In-Marsh  
Gloucestershire, GL56 0AF

[harrisonhardie.co.uk](http://harrisonhardie.co.uk) 01608 651000