



## Udney Park Road, TW11

£524,999

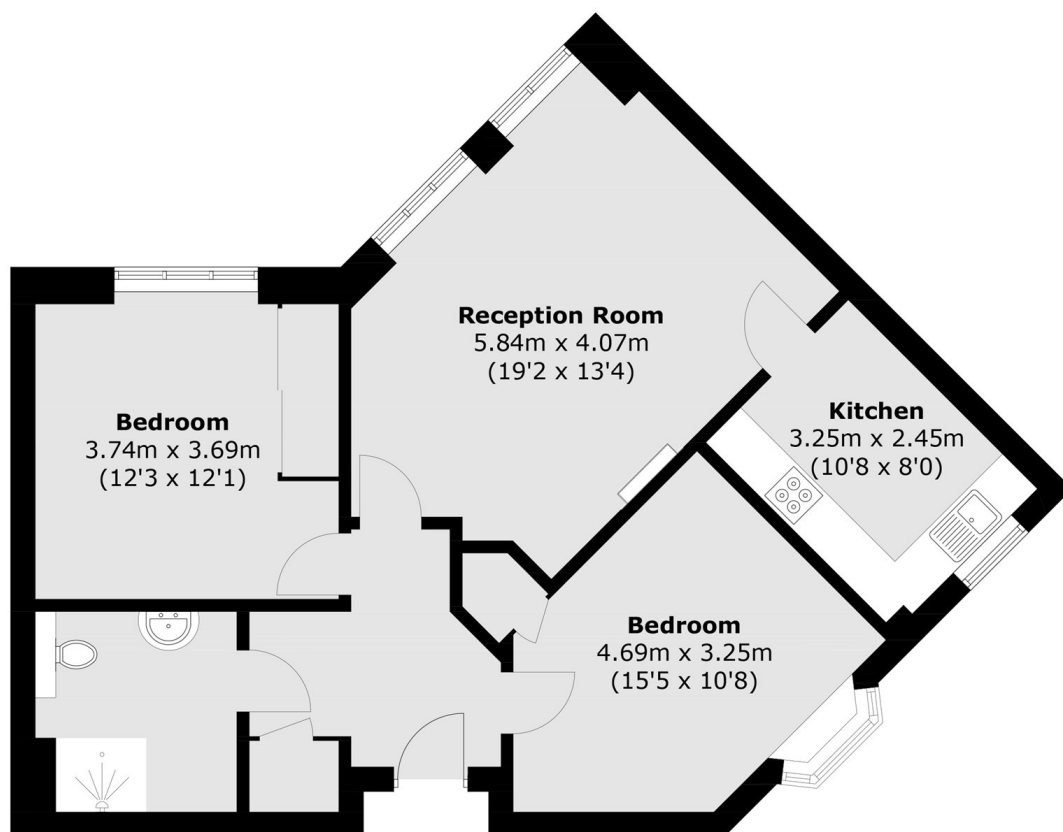
This well presented two-bedroom retirement apartment is perfectly positioned in the centre of Teddington. Designed for comfort, independence and peace of mind, this beautifully maintained development combines high quality living with exceptional on-site services.

Fullerton Court is located on Udney Park Road moments from Teddington High Street. Teddington High Street offers local and well known retailers. The River Thames and Royal Bushy Park are close by.

### Features

- Central Location
- Two Bedrooms
- Ground Floor Apartment
- Sought After Retirement Development
- Communal Gardens
- No Onward Chain

Udney Park Road,  
Teddington, TW11



**Ground Floor**

Total area (approx.): 73.6 sq. m (792.2 sq. ft)