



# Herders Way

Keresley End, Coventry, CV7 8RJ

## Offers over £245,000

\* Modern three-bedroom semi-detached house \* Located on Herders Way in the sought-after area of Keresley End, Coventry. This property is ideally situated, providing easy access to local amenities and excellent transport links, including the M6 and A444, making it an excellent choice for both commuters and families.

Upon entering the home, you are greeted by a spacious entrance hall that leads to a well-appointed downstairs WC, adding convenience for both guests and family members. The ground floor features a contemporary kitchen/diner, perfect for family meals and entertaining, alongside a comfortable lounge that offers a relaxing space to unwind after a long day. The rear of the property boasts a low-maintenance garden, complete with artificial grass, allowing for year-round enjoyment without the hassle of upkeep. Additionally, side access leads to off-road parking, complemented by a shed for convenient storage of garden tools and equipment.

As you ascend to the first floor, you will discover three generously sized bedrooms. The master bedroom benefits from an en-suite bathroom, providing a private retreat, while a family bathroom serves the other two bedrooms, ensuring ample facilities for all.

This property has been freshly decorated throughout and features new carpets, making it

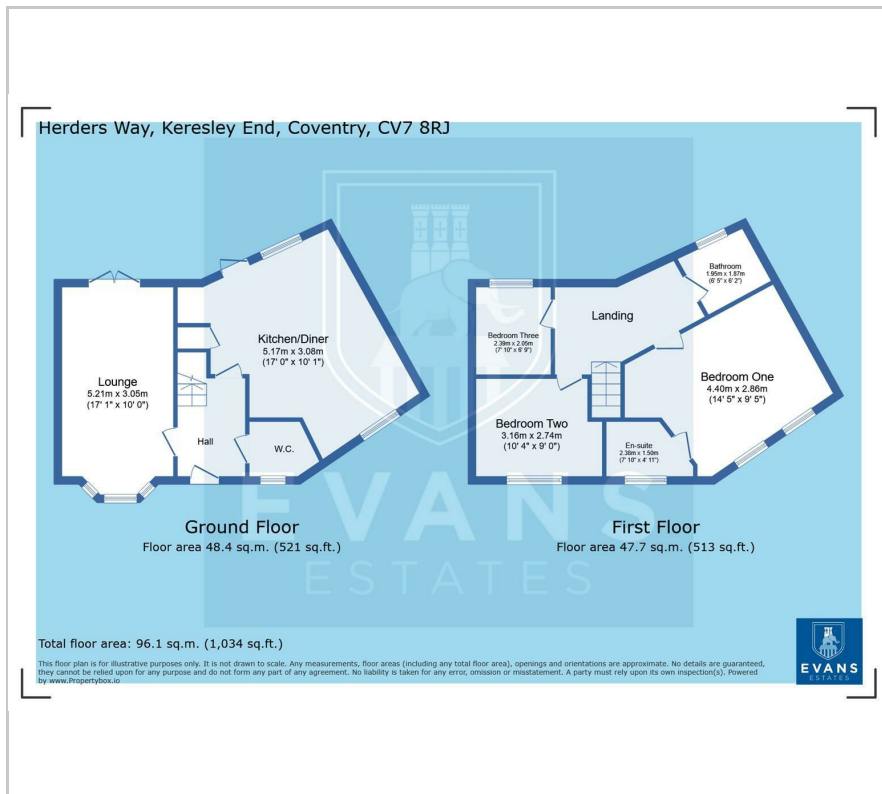
- Three Bedrooms
- Master Bedroom with En Suite
- Off Road Parking
- Lounge
- Kitchen Diner

### Viewing

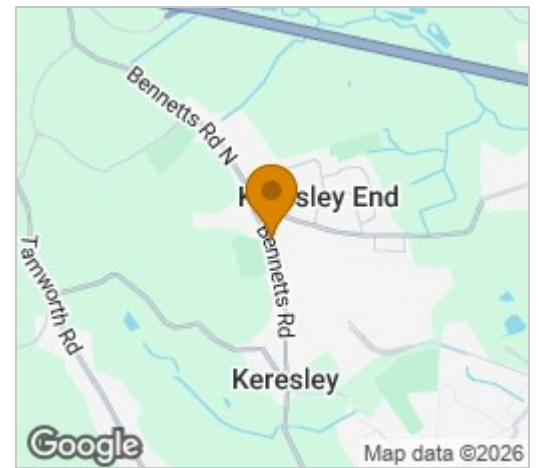
Please contact our Evans Estates Office on 02476333363 if you wish to arrange a viewing appointment for this property or require further information.



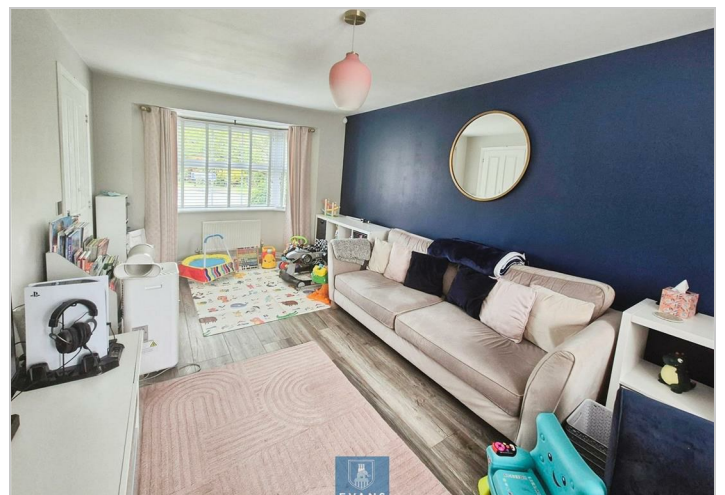
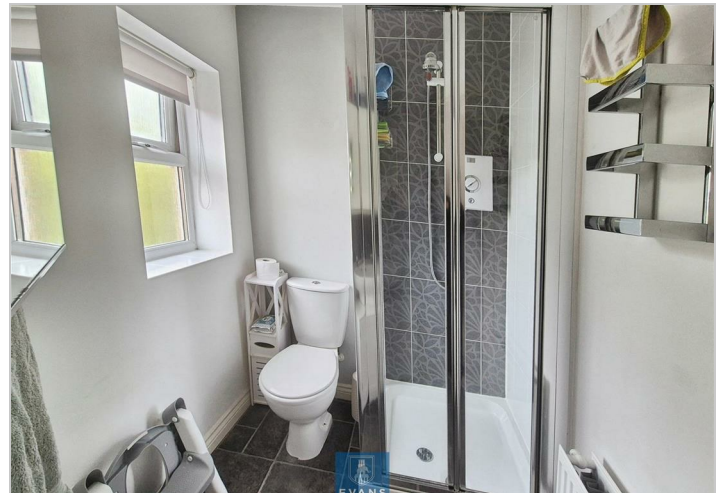
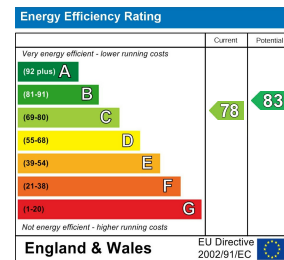
## Floor Plan



## Area Map



## Energy Efficiency Graph



These particulars, whilst believed to be accurate are set out as a general outline only for guidance and do not constitute any part of an offer or contract. Intending purchasers should not rely on them as statements of representation of fact, but must satisfy themselves by inspection or otherwise as to their accuracy. No person in this firm's employment has the authority to make or give any representation or warranty in respect of the property.

47 Headington Avenue, Coventry, West Midlands, CV6 2GX

Tel: 02476333363 Email: [info@evans-estates.co.uk](mailto:info@evans-estates.co.uk) <https://www.evans-estates.co.uk>