



Guide Price
£260,000

Freehold

3x  1x  1x 

**Green Lane, Shanklin,
Isle of Wight, PO37**

OVER 60?

Secure this property
for up to **59% less!**

Pittis 
Helping you move forwards



Main features

- End of terrace house with front and rear gardens
- Parking for several cars to the rear with rear access to the house
- Popular residential area close to the town centre and transport links
- Open plan lounge/dining room and kitchen

Accommodation

GROUND FLOOR

Entrance Hallway
 Lounge/Dining Room: 15'8 x 14'10 (4.78m x 4.52m)
 Kitchen: 8'7 x 8'0 (2.62m x 2.44m)
 Conservatory: 12'9 x 9'0 (3.89m x 2.75m)
 Cloakroom

FIRST FLOOR

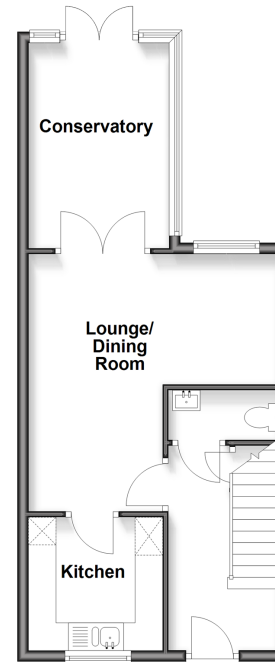
Landing
 Bedroom 1: 12'0 x 8'0 (3.66m x 2.44m)
 Bedroom 2: 9'0 x 8'0 (2.75m x 2.44m)
 Bedroom 3: 8'6 x 6'6 (2.59m x 1.98m)
 Bathroom: 7'2 x 6'6 (2.19m x 1.98m)

OUTSIDE

Front & Rear Gardens
 Off Road Parking

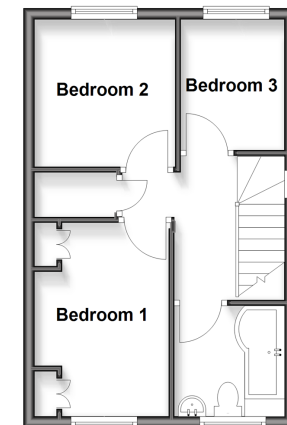
Ground Floor

Approx. 42.3 sq. metres (455.0 sq. feet)



First Floor

Approx. 32.5 sq. metres (350.3 sq. feet)



Call Shanklin - 01983 868777 ■ pittis.co.uk

■ Through a Homewise Home For Life Plan people aged 60+ can secure this property for up to 59% less, by purchasing a Lifetime Lease



60620410/20260407/RC/RC