



30 Park Mount Harpenden, AL5 3AR

Fabulous, five bedroom semi-detached home of circa 1,733 sq ft, arranged over three floors. Benefiting from a private rear garden and off-street parking and ideally located for excellent schooling. Close to the popular Nickey Line and within walking distance of the town centre and station.

Guide price £1,099,995

30 Park Mount

Harpenden, AL5 3AR



- Semi-detached house
- Three reception rooms
- Within walking distance of town centre & station
- Five bedrooms
- Private rear garden
- Well placed for excellent schooling
- Arranged over three floors
- Driveway
- Council Tax Band G

Porch

Entrance Hall

Living Room

14'0" x 12'6" (4.29 x 3.83)

Dining Room

13'11" x 11'6" (4.26 x 3.52)

Kitchen/Breakfast Room

19'8" x 16'4" (6.01 x 5)

Family Area

Utility Area

Garage

16'2" x 9'2" (4.93 x 2.81)

Landing

Bedroom One

12'4" x 9'8" (3.76 x 2.95)

En-suite with shower

Bedroom Two

14'11" x 11'8" (4.56 x 3.58)

Bedroom Three

13'1" x 11'9" (3.99 x 3.60)

Bedroom Four

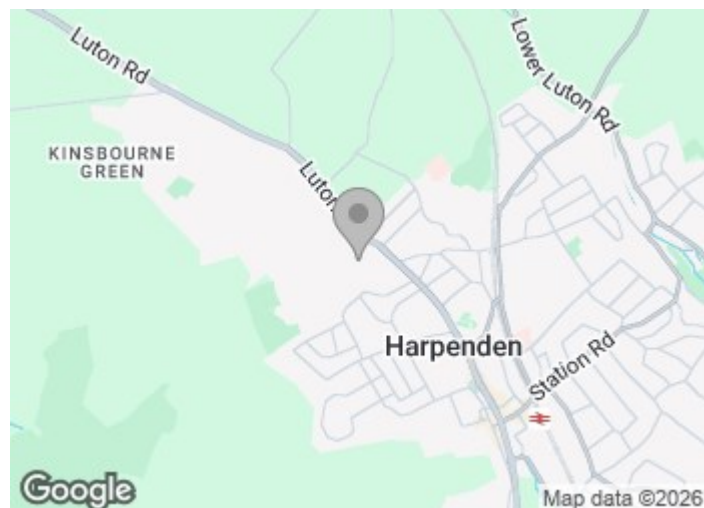
9'5" x 5'2" (2.88 x 1.58)

Bathroom

Landing

Bedroom Five

15'11" x 14'6" (4.86 x 4.44)



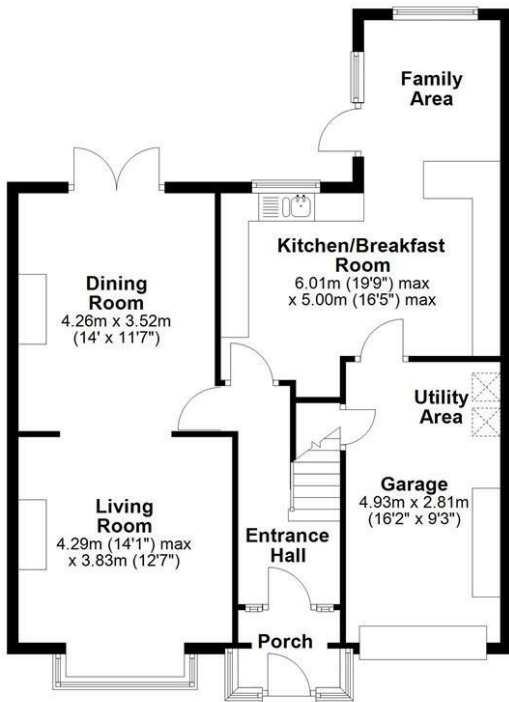
[Directions](#)



Floor Plan

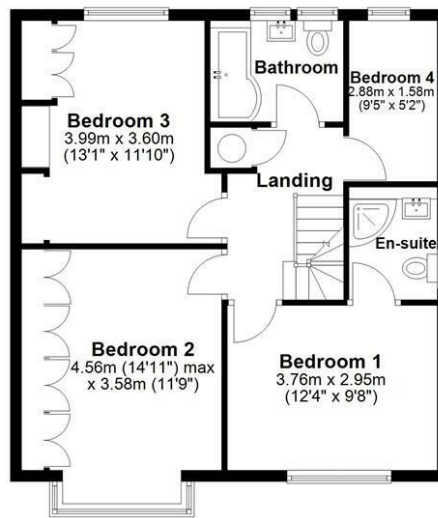
Ground Floor

Approx. 79.0 sq. metres (849.9 sq. feet)



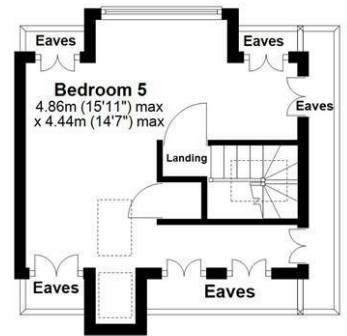
First Floor

Approx. 61.7 sq. metres (664.5 sq. feet)



Second Floor

Approx. 20.4 sq. metres (219.3 sq. feet)



Total area: approx. 161.1 sq. metres (1733.6 sq. feet)

Sketch layout only. Not to scale. Plan produced for Whittaker & Co.

Plan produced using PlanUp.

These particulars, whilst believed to be accurate are set out as a general outline only for guidance and do not constitute any part of an offer or contract. Intending purchasers should not rely on them as statements of representation of fact, but must satisfy themselves by inspection or otherwise as to their accuracy. No person in this firm's employment has the authority to make or give any representation or warranty in respect of the property.

