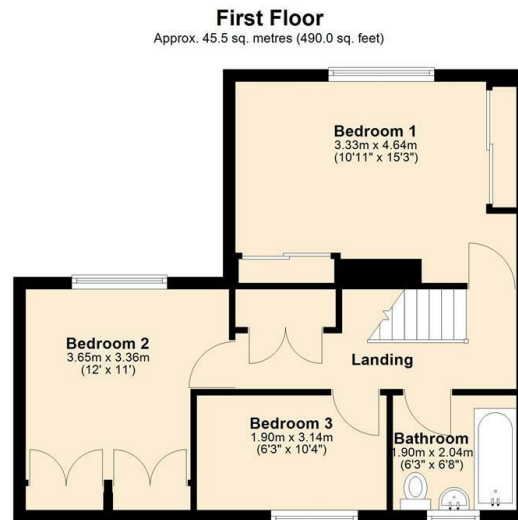




27 Heath Road, Sheffield, S6 1JR

Offers In The Region Of £229,950

- Semi Detached Family Home
- Three Bedrooms
- Gas Central Heating
- Popular Residential Area
- NO CHAIN
- Close To A Wide Range Of Amenities
- Gardens To Front And Rear
- Well Presented Accommodation
- uPVC Double Glazing
- Off Road Parking



Total area: approx. 91.4 sq. metres (983.8 sq. feet)



Directions

Viewings

Viewings by arrangement only. Call 0114 283 4050 to make an appointment.

Council Tax Band

B

EPC Rating:

D

Energy Efficiency Rating		Current	Potential
Very energy efficient - lower running costs			
(92 plus)	A		
(81-91)	B		82
(69-80)	C		
(55-68)	D	65	
(39-54)	E		
(21-38)	F		
(1-20)	G		
Not energy efficient - higher running costs			
England & Wales		EU Directive 2002/91/EC	