

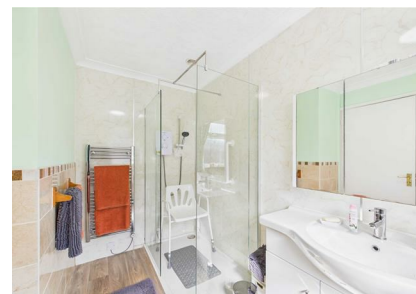


Pashford Close, Brandon, IP27 9EB

Rent - £250,000 Deposit -

A detached three bedroom bungalow situated on an established development of similar properties in the popular village of Lakenheath. The bungalow occupies a generous plot and benefits from Upvc double glazing and a detached garage. Available 'chain Free', viewings are recommended.

- DETACHED BUNGALOW
- LOUNGE/DINING AREA
- THREE BEDROOMS
- ELECTRIC NIGHT STORAGE HEATING
- GARAGE
- POPULAR WELL SERVED VILLAGE
- KITCHEN
- SHOWER ROOM
- UPVC DOUBLE GLAZING
- GOOD SIZE GARDENS & DRIVEWAY/PARKING AREA



Council Tax Band: B - EPC Rating: E 41

