



CARVERS

SALES & LETTINGS

Pierremont Crescent

Darlington, DL3 9PB

£650 Per calendar month

Apartment



AVAILABLE 11TH AUGUST - Situated in the charming West End of Darlington, this larger-than-average one-bedroom apartment offers a delightful blend of modern living and period elegance. Set within a beautifully converted period property, the apartment boasts the added convenience of private parking to the rear, ensuring ease of access to local amenities, bus routes, and major road links.

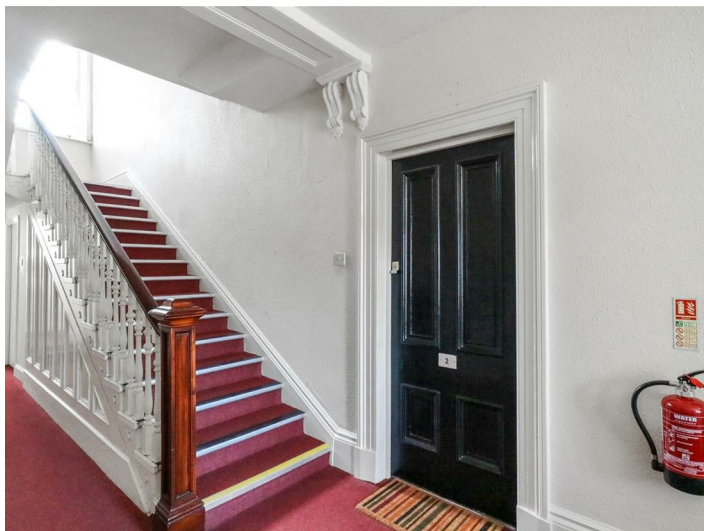
Upon entering through the grand front door, you are welcomed into a communal hallway that exudes character. The apartment door, located conveniently to the right, features a secure intercom system for enhanced safety. Inside, the hallway leads you to a spacious lounge, adorned with an electric feature fire and a bay window that overlooks the front of the property, creating a warm and inviting atmosphere.

Adjacent to the lounge, the well-appointed kitchen is equipped with wall and floor units, a fitted oven and hob, as well as a washing machine and fridge freezer, making it a practical space for culinary endeavours. The modern bathroom suite is thoughtfully designed, featuring a bath, WC, wash hand basin, and a separate shower cubicle. For added convenience, a large cupboard area opposite the bathroom provides ample storage.

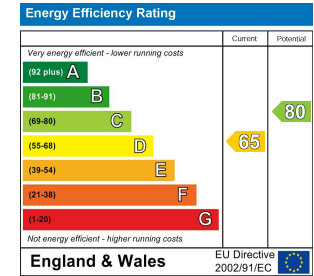
The generously sized double bedroom, located further down the hallway, offers plenty of space for bedroom furniture and overlooks the car parking area, which can also be accessed through the rear door of the communal area. Additionally, the property includes a personal storage area in the basement, securely locked with its own door, along with a communal door providing access to the car park.

This apartment presents an excellent opportunity for those seeking a comfortable and stylish home in a prime location.

Council Tax: A
EPC: D







Property size taken from EPC sq ft



Searching 1,000s of mortgages
 Access to 12,000+ products from 90+ lenders across the UK.
 Call: 01325 370341 Visit: Any of our offices
 Web: mortgageadvicebureau.com/carvers

Mortgage Advice Bureau

Your home may be repossessed if you do not keep up repayments on your mortgage.
 There may be a fee for mortgage advice. The actual amount you pay will depend upon your circumstances.
 The fee is up to 1% but a typical fee is 0.3% of the amount borrowed.







These particulars do not constitute any part of an offer or contract. None of the statements contained in these particulars are to be relied on as statements or representations of fact and any intending purchaser must satisfy themselves by inspection or otherwise to the correctness of each of the statements contained in these particulars. The vendor does not make or give, and neither Carvers nor any person in their employment has any authority to make or give any representation or warranty whatever in relation to this property.