



## Queensway, W2

£865 Per week

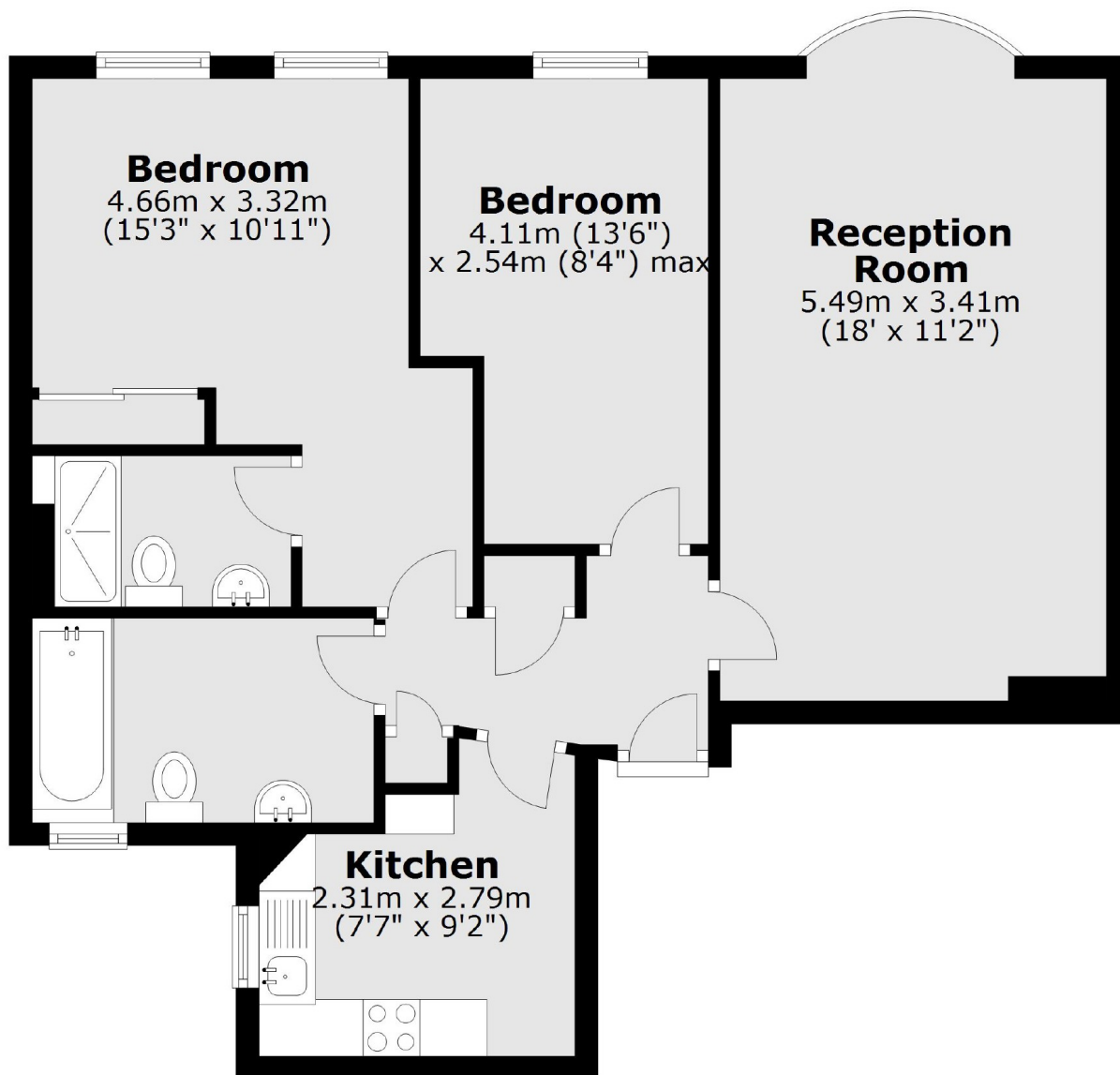
A spacious two bedroom, two bathroom apartment in a portered block on Queensway. With lift access, layout includes wood flooring throughout, a separate modern kitchen and two double double bedrooms.

Princess Court is a period mansion building on Queensway among many shops and restaurants and just north of Kensington Gardens.

### Features

- Two Bedrooms
- Two Bathrooms
- Wood Floors
- Modern Kitchen
- Portered
- Lift Access

# Queensway, London, W2



Total area: approx. 63.5 sq. metres (683.7 sq. feet)