



Albert Road, Epsom

In Excess of **£525,000**



Albert Road

Epsom

Immaculate 2-bed Victorian cottage in sought-after College Area. Modern kitchen, stylish shower room, south-west garden. Close to town centre and station. Character and contemporary comfort throughout. Call to view now!

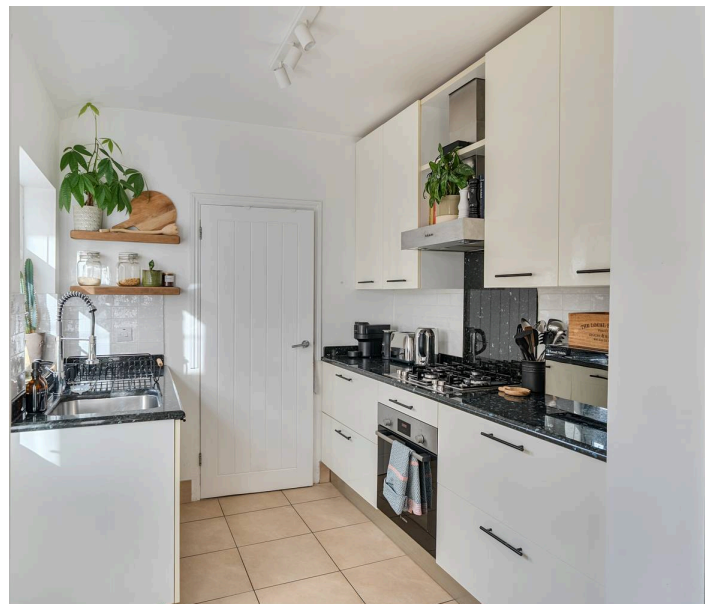
Council Tax band: D

Tenure: Freehold

EPC Energy Efficiency Rating: C

EPC Environmental Impact Rating: G

- Mid Terrace Victorian Cottage
- Beautifully Presented
- Character Features
- Sought After College Area
- Two Generous Receptions
- Contemporary Kitchen
- Modern Shower Room
- Two Double Bedrooms
- Sunny South West Facing Garden
- Close To Town Centre & Station



This immaculately presented mid-terrace Victorian cottage is set within the highly sought-after College Area, seamlessly combining period character with stylish contemporary living.

The property opens into a generous living room, complemented by a separate dining room, offering flexible and inviting spaces ideal for both everyday living and entertaining. The modern kitchen has been carefully designed with sleek cabinetry and ample work surfaces, perfectly suited to modern lifestyles. A well-appointed contemporary shower room further enhances the home, featuring quality fittings and a fresh, neutral finish.

To the first floor are two well-proportioned double bedrooms. The principal bedroom benefits from fitted wardrobes, providing excellent storage, while the second bedroom is equally versatile and well suited for guests, children, or use as a home office. Tasteful décor throughout allows the new owners to move straight in and enjoy the property immediately. To the rear, the cottage enjoys a generously sized, sunny south-west facing garden.

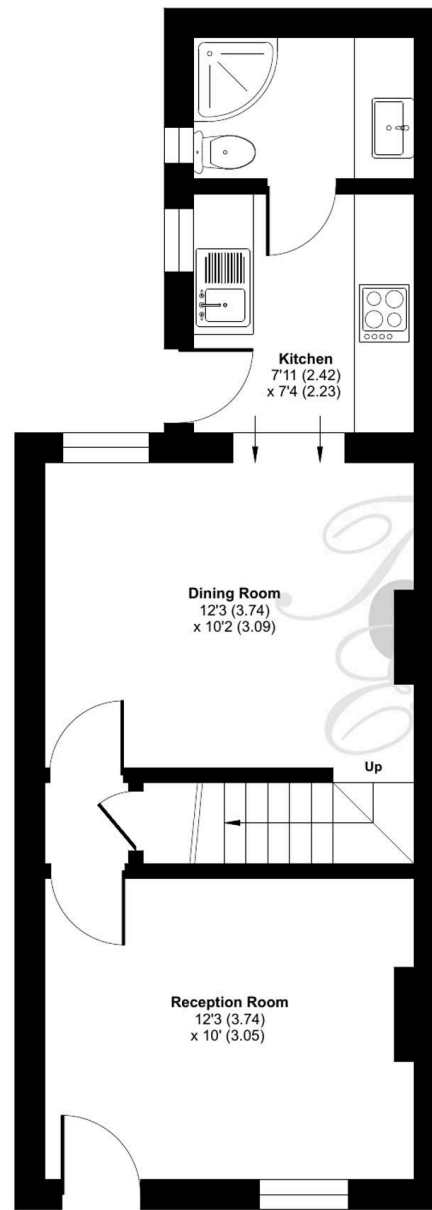
Ideally located within easy reach of the vibrant town centre and mainline station, the property offers excellent connectivity for commuters alongside a wide selection of local amenities. Combining character features, modern comforts, and an enviable location, this charming Victorian cottage presents a rare opportunity to acquire a home of real quality in one of the area's most desirable neighbourhoods.

Early viewing is strongly recommended to fully appreciate the charm and standard of accommodation on offer.

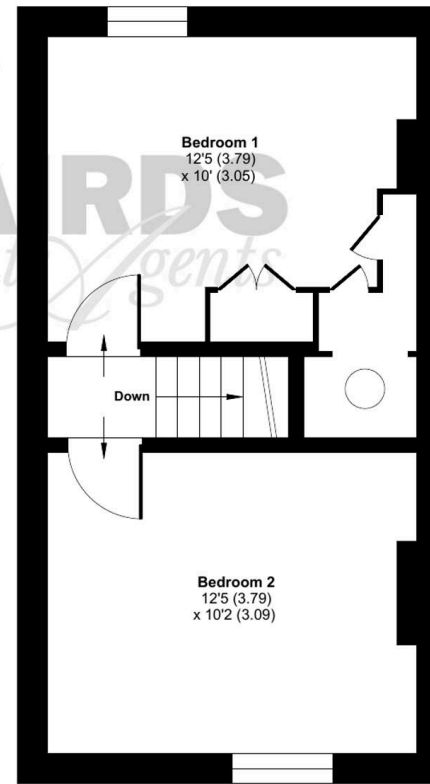
Albert Road, Epsom, KT17

Approximate Area = 687 sq ft / 63.8 sq

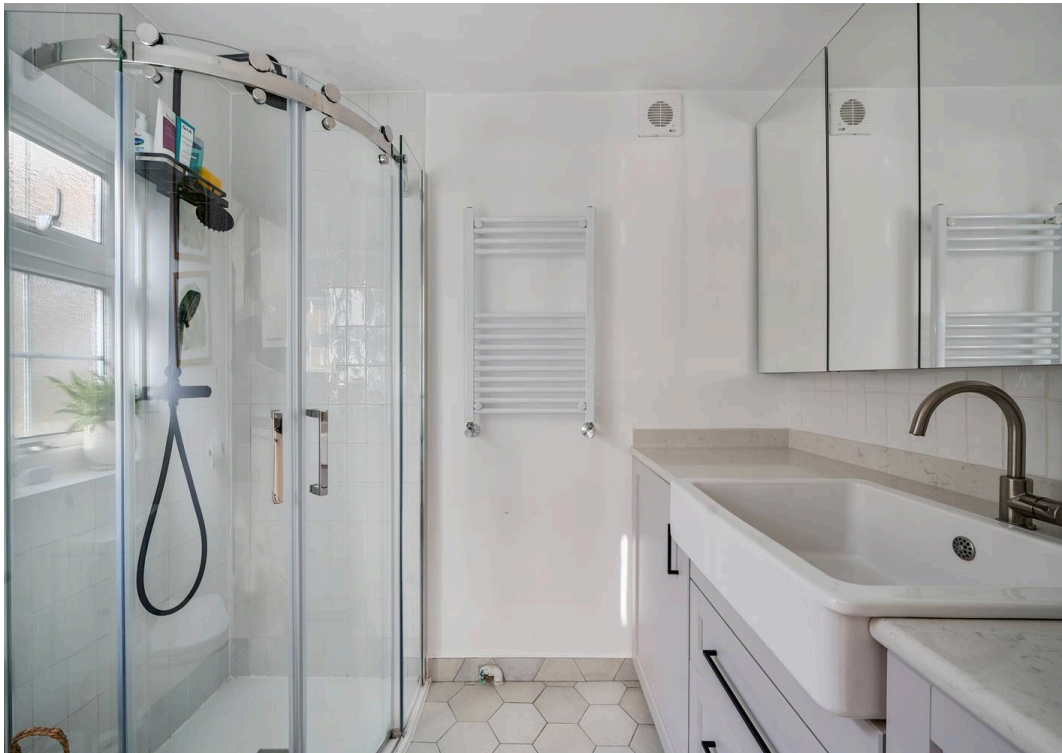
For identification only - Not to scale



Ground Floor



First Floor





Cairds The Estate Agents

Cairds The Estate Agents, 128-130 High Street - KT19 8BT

01372 743033 • homes@cairds.co.uk • www.cairds.co.uk