



Guide Price
£200,000

Leasehold

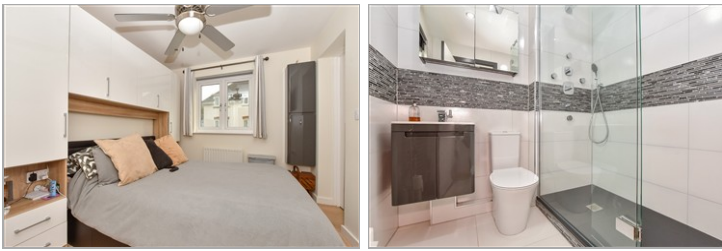
2x  2x  1x 

**Ingram Close, Larkfield,
Aylesford, Kent, ME20**

OVER 60?

Secure this property
for up to **59% less!**

Wards
Helping you move forwards



Main features

- Well presented throughout
- Enjoy the luxury of both an en-suite shower room & a bathroom
- Sociable kitchen & lounge/diner - perfect for entertaining
- Good schools, amenities & leisure facilities all within walking distance
- Excellent commuter links by road & rail close by

Accommodation

FIRST FLOOR

Entrance Hall

Lounge/Diner: 16'4 x 11'1 (4.98m x 3.38m)

Kitchen: 9'2 x 9'2 (2.80m x 2.80m)

Bedroom 1: 14'0 x 8'6 (4.27m x 2.59m)

En-Suite Shower Room

Bedroom 2: 11'1 x 8'1 (3.38m x 2.47m)

Bathroom

OUTSIDE

Car Port For 1 Car

Communal Garden

First Floor

Approx. 61.5 sq. metres (661.9 sq. feet)



Call Larkfield - 01732 847877 ■ wardsofkent.co.uk

- Legal advice should be taken to verify fixtures/fittings, planning, alterations and/or lease details
- Appliances & services are untested, dimensions are approximate and floor plans are not to scale
- Through a Homewise Home For Life Plan people aged 60+ can secure this property for up to 50% less, by purchasing a Lifetime Lease.



12935504/20251020/CK/JT