



Northfield Road, W13

£475,000

A smartly presented two bedroom flat on the second floor of this select private development set in this great Northfields spot.

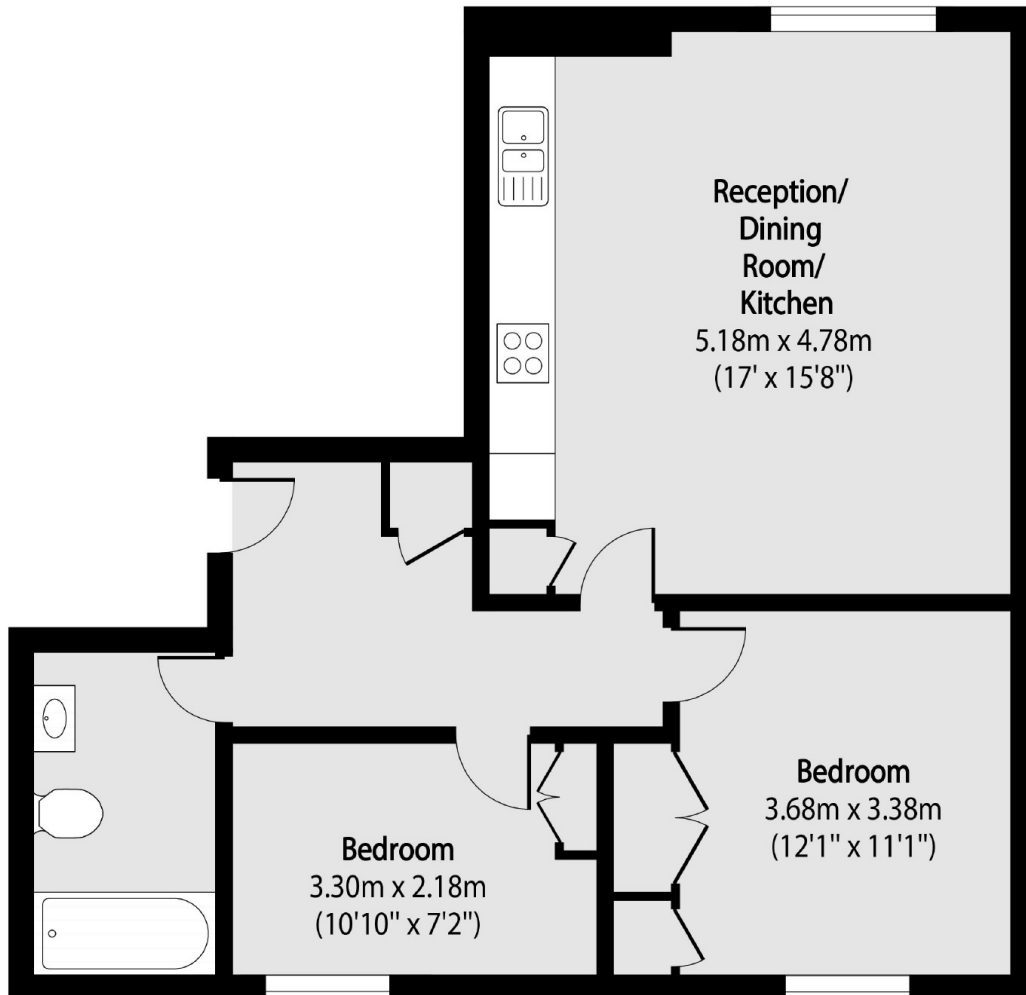
Enjoys lots of natural light, share of freehold and allocated secure off street parking.

Located just moments from local shops and cafés, with easy access to the Piccadilly line at Northfields station and West Ealing station for the Elizabeth Line.

Features

- Second Floor Flat
- Allocated Secure Parking
- Excellent Condition
- Two Bedrooms
- Close to Shops & Transport Links
- Share of Freehold

Northfield Road,
London, W13



Total area (approx): 57.88 sq m (623 sq. ft)

Dexters

Northfields
140 Northfield Avenue
London
W13 9SB
Sales
020 8545 8588

Energy Rating: . We aim to make our particulars both accurate and reliable. However they are not guaranteed; nor do they form part of an offer or contract. If you require clarification on any points then please contact us, especially if you're traveling some distance to view. Please note that appliances and heating systems have not been tested and therefore no warranties can be given as to their good working order.

 **RICS** | Regulated
Estate Agent
and Letting Agent

[dexters.co.uk](https://www.dexters.co.uk)