



## 50 Belvoir Close, London, SE9 4TE

Offers Over £365,000

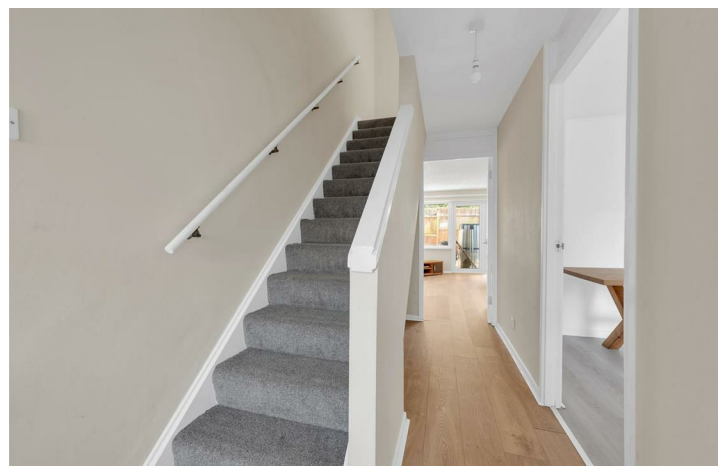
- End of Terrace
- 15' Lounge
- First Floor Bathroom
- Three Bedrooms
- 16'10 Kitchen/Diner
- Vacant Possession

# 50 Belvoir Close, London SE9 4TE

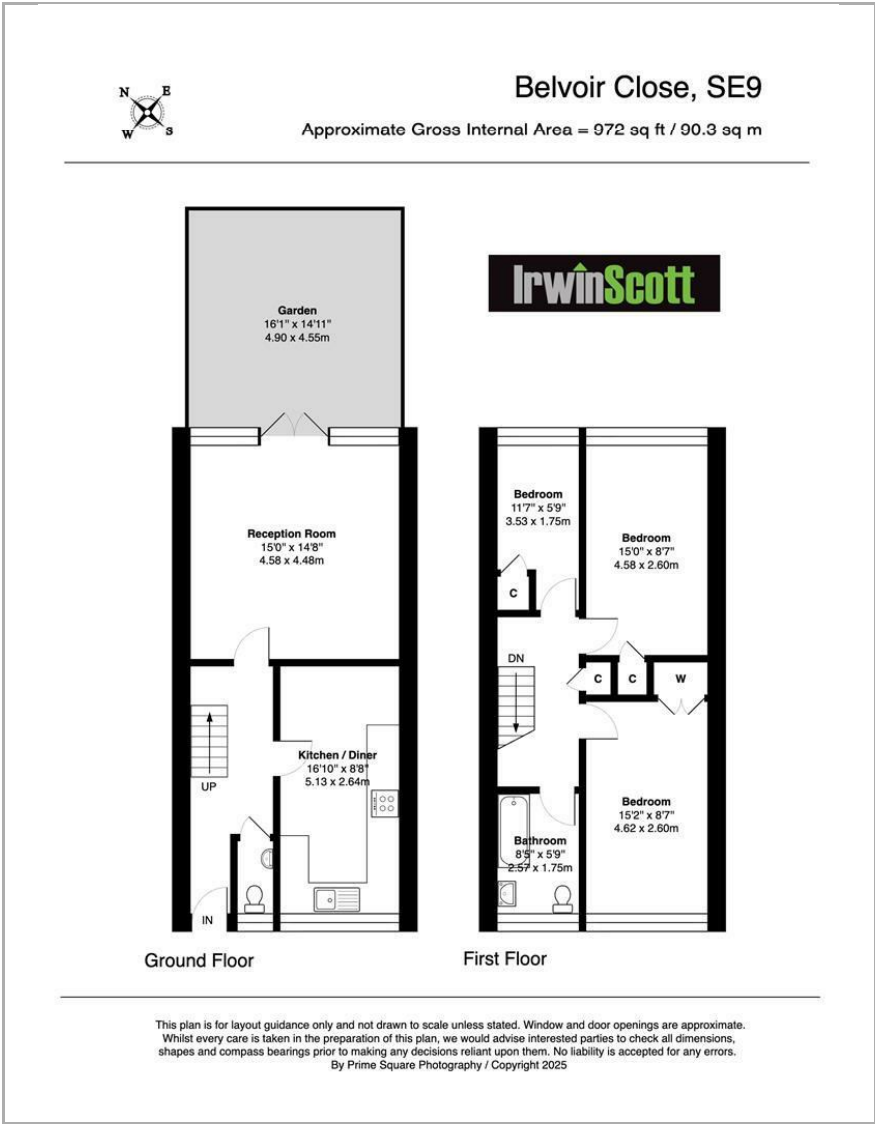
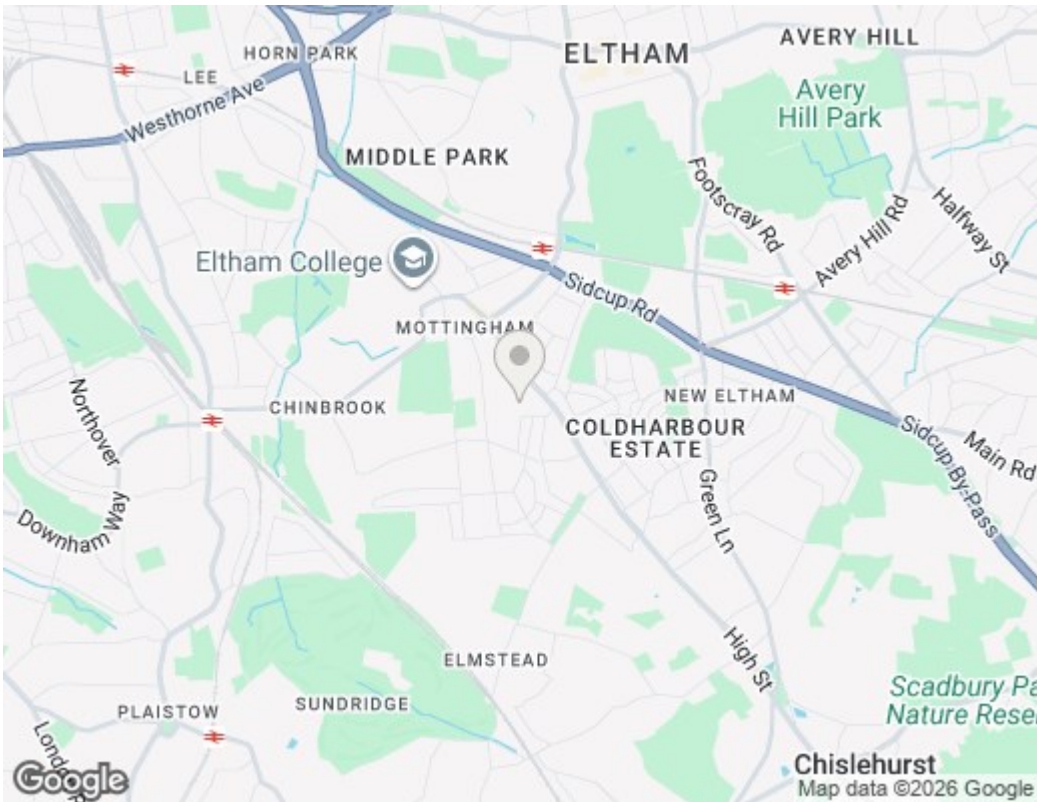
Situated close to Mottingham Village with all its local shops and amenities is this three bedroom end of terrace family home. Having recently been updated the property offers a 15' lounge, 16'10 kitchen/diner as well as a ground floor cloakroom. Whilst on the first floor you will find two double bedrooms, one single bedroom and a family bathroom. Offered with vacant possession makes this home a great buy!



Council Tax Band: C







## Viewings

Viewings by arrangement only.  
Call 0208 859 1100 to make an appointment.

## EPC Rating:

D

