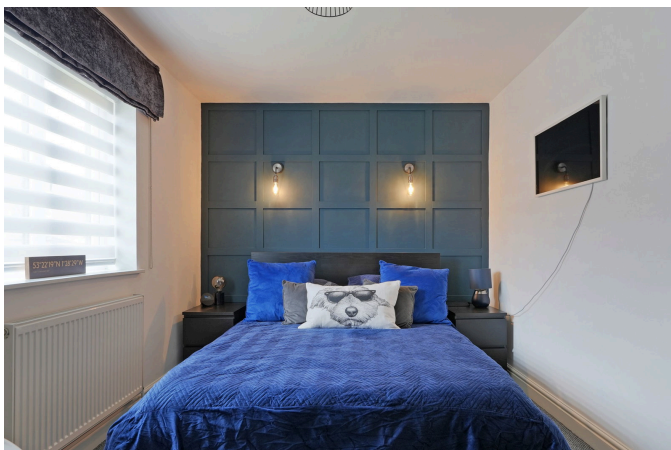


Jubilee Works, Middlecroft Road, Staveley

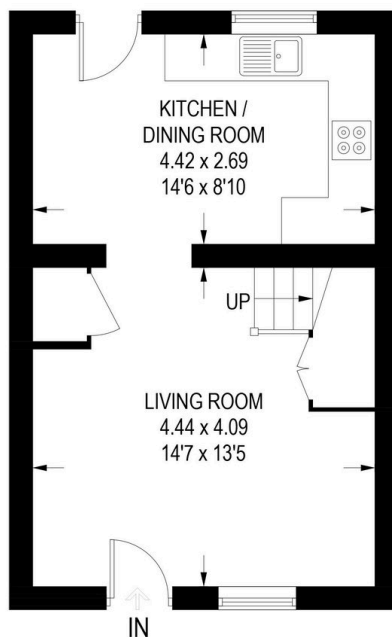
Guide Price £130,000 - £140,000

2 1 1

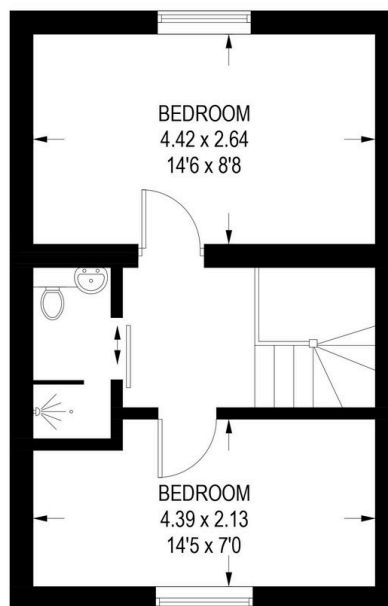


- Stylish Modern Terraced Home
- Bright Living Room
- Integrated Kitchen Appliances
- Low Maintenance Outdoor Space
- Ideal First-Time Purchase
- Two Well-Proportioned Bedrooms
- Contemporary Kitchen Dining Room
- Modern Shower Room
- Convenient Location
- Property Reference: RB0377

APPROXIMATE GROSS INTERNAL AREA = 62.7 SQ M / 675 SQ FT



GROUND FLOOR
31.5 SQ M / 339 SQ FT



FIRST FLOOR
31.2 SQ M / 336 SQ FT

Illustration is for identification purposes only, measurements are approximate, not to scale.

A stylish and contemporary two-bedroom terraced home that offers well-presented accommodation throughout, making it an ideal purchase for first-time buyers, young professionals or those looking to downsize. Thoughtfully designed with modern finishes, bright living spaces and a low-maintenance garden, the property combines comfort and practicality in a convenient location close to local amenities and transport links.

Property Reference: RB0377

