



Bridgewater Square, EC2Y

£3,000 Per calendar month

A well proportioned two bedroom, two bathroom apartment in a quiet square in the heart of the City. With separate kitchen, a bright west-facing aspect and a daytime porter, this is the perfect property for professional sharers.

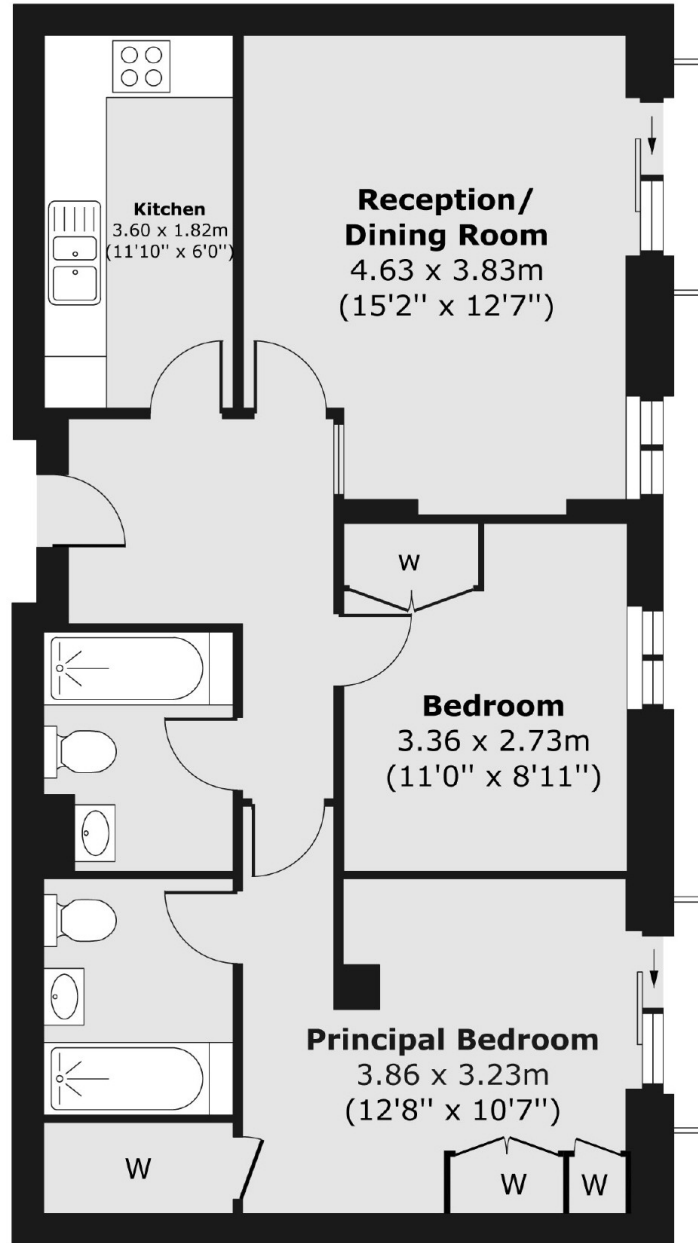
The apartment is located close to Barbican Underground station, and within walking distance of Farringdon and Moorgate Stations. Local amenities are all located nearby with supermarkets, St Paul's One New Change and Smithfield Market round the corner.

Features

- Two Bedrooms
- Two Bathrooms
- Daytime Porter
- Juliet Balcony
- Solid Flooring Throughout
- Quiet Cul-De-Sac Location

Bridgewater Square, London, EC2Y

Third Floor



Total area (approx.) 63.84 sq. m (687 sq. ft)
Balcony area (approx.) 1.52 sq. m (16 sq. ft)