



Beech Mews, Davenport Park, SK2 6LB

£425,000

**GASCOIGNE  
HALMAN**

THE AREA'S LEADING ESTATE AGENCY

This three bedroom family residence is positioned in a wonderful quiet cul-de-sac location. The property offers versatile living accommodation spread across three levels. Having undergone a superb level of refurbishment throughout, the property now reveals stunning sleeping quarters and reception area's for the whole family to enjoy. The property sits within walking distance of Davenport train station as well as an array of amenities within the village. The property enjoys a privileged location close to outstanding primary & secondary schools, reaffirming that this home is more than suitable for families.

Council Tax Band: C

Tenure: Freehold

EPC Rating: D

- Spacious Townhouse Revealing 1400 sq/ft of Wonderful Living Accommodation
- Highly Desirable Residential Cul-De-Sac Location Within The Beautiful Davenport Conversation Area
- Beautiful Landscaped Courtyard Style Rear Garden With Stunning Established Borders
- New Stylish Fitted Kitchen & Re-Designed Contemporary Family Bathroom
- Within Walking Distance of Davenport Train Station & Excellent Primary & Secondary Schools
- Three Well Proportioned Bedrooms & Spacious Open Plan Reception Area, Ideal for Entertaining

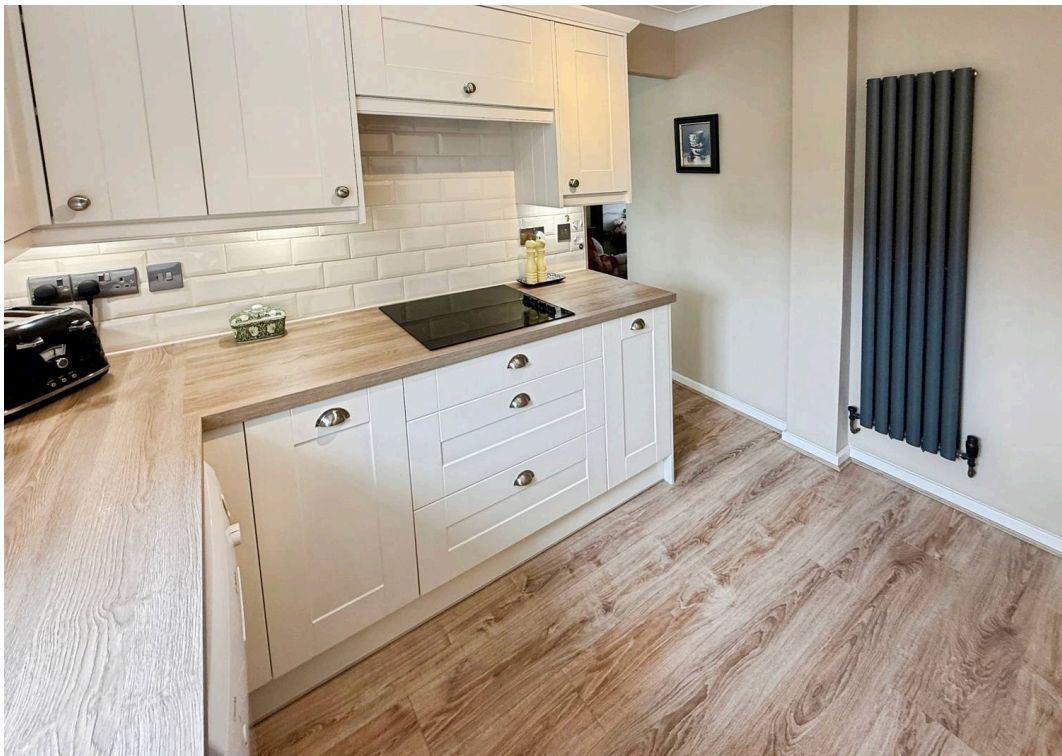




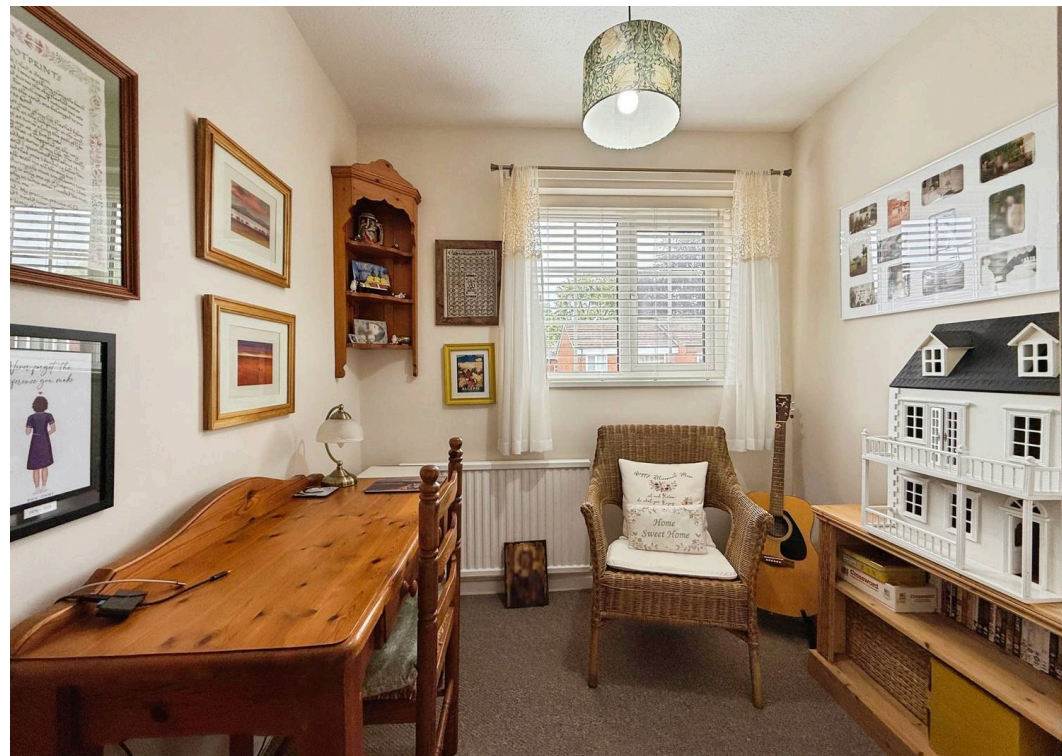


Situated in arguably one of the best positions in this small select development of Davenport Park, this spacious townhouse is positioned in a quiet cul-de-sac and reveals contemporary accommodation in the region of 1400 sq/ft. This lovely family residence has been superbly modernised throughout and offers excellent family accommodation. The entrance hall includes a useful cloaks cupboard. A spacious utility room and W/C as well as a tastefully presented conservatory complete the ground floor accommodation. A larger than average integral garage provides ideal storage but equally the garage could be transformed into stylish usable additional living space (subject to permissions). To the first floor there is a landing area leading to a stunning large living room which displays an open plan arrangement to the dining room. This immaculate open plan living space provides a functional and sociable entertaining area for friends and family. A newly fitted kitchen provides a practical space for preparing meals and includes a range of modern day to day appliances for additional convenience. To the second floor there are three well proportioned bedrooms, the master bedroom incorporating bespoke contemporary fitted wardrobes. A newly installed family bathroom has been re-designed with elegance and style. To the front there is a double driveway giving access to the large integral garage, complete with electric garage door. To the rear there is a courtyard style garden which has been expertly landscaped and includes beautiful established borders and a large patio area which is ideal for outdoor dining.



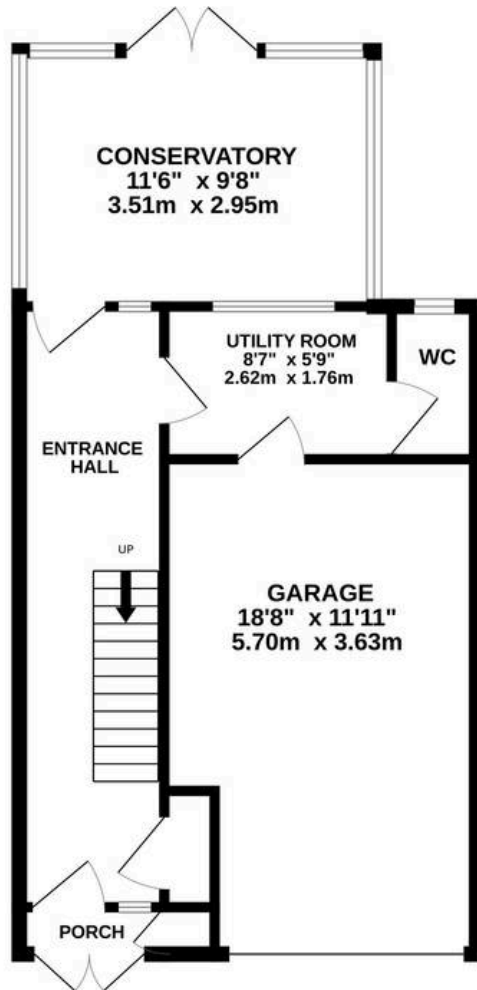




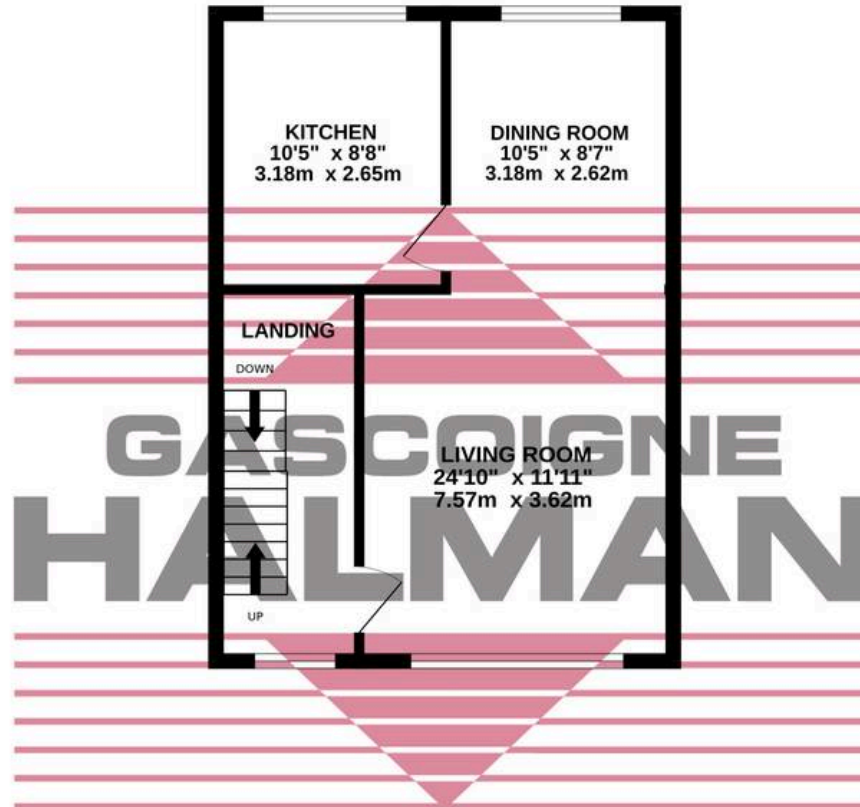




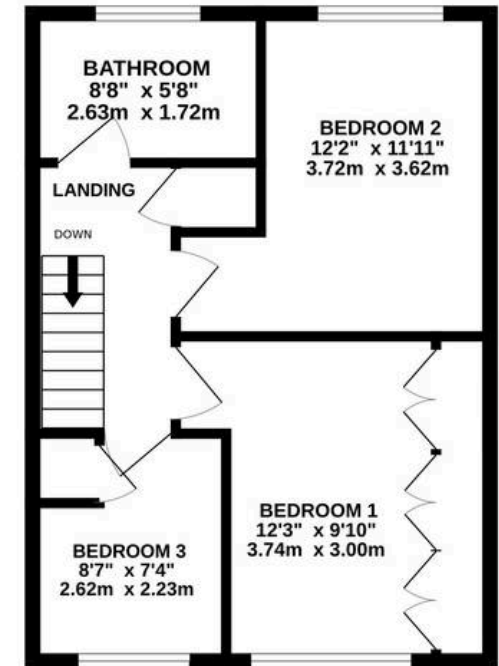
GROUND FLOOR  
553 sq.ft. (51.3 sq.m.) approx.



1ST FLOOR  
423 sq.ft. (39.3 sq.m.) approx.



2ND FLOOR  
423 sq.ft. (39.3 sq.m.) approx.



TOTAL FLOOR AREA : 1399 sq.ft. (130.0 sq.m.) approx.

Measurements are approximate. Not to scale. Illustrative purposes only  
Made with Metropix ©2025



## Gascoigne Halman

Gascoigne Halman, 9 Ack Lane East - SK7 2BE

0161 439 5555

[bramhall@gascoignehalman.co.uk](mailto:bramhall@gascoignehalman.co.uk)

[www.gascoignehalman.co.uk/](http://www.gascoignehalman.co.uk/)





THE AREA'S LEADING ESTATE AGENCY