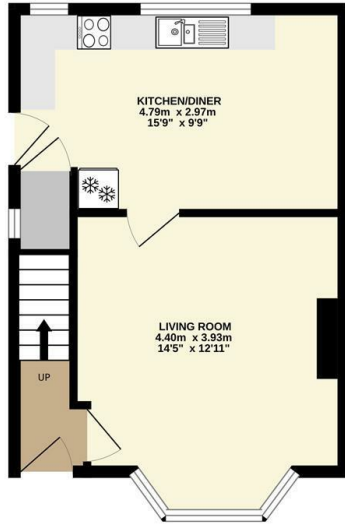


28 Robertson Road, Sheffield, S6 5DX

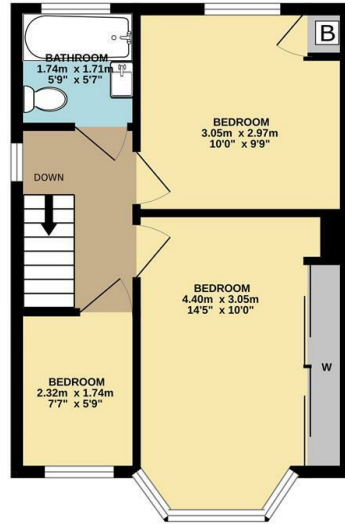
Offers Over £260,000

- Semi detached home
- Spacious living room
- Freehold
- Beautiful countryside nearby
- South-east facing rear garden
- Modern kitchen diner
- Close to Bole Hills
- Stunning views over Rivelin Valley
- Two double bedrooms and one single bedroom/home office
- Short walk to Walkley and Crookes

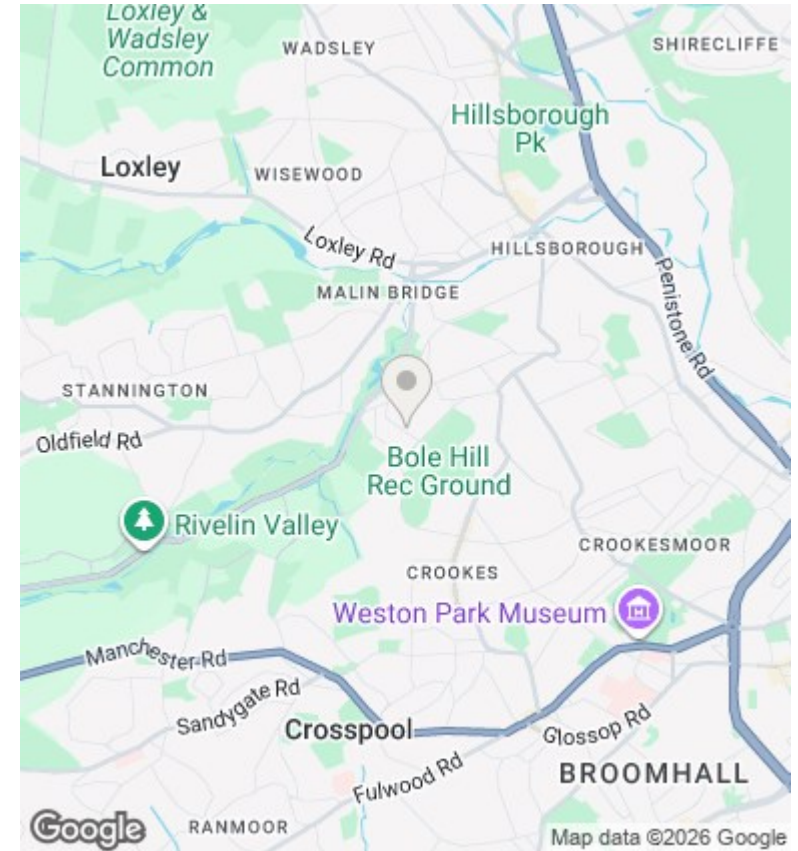
GROUND FLOOR
33.1 sq.m. (356 sq.ft.) approx.



1ST FLOOR
33.2 sq.m. (358 sq.ft.) approx.



TOTAL FLOOR AREA : 66.3 sq.m. (714 sq.ft.) approx.
Measurements are approximate. Not to scale. Illustrative purposes only
Made with Metroplan ©2026



Directions

Viewings

Viewings by arrangement only. Call 01142 687777 to make an appointment.

Council Tax Band

C

EPC Rating:

C

Energy Efficiency Rating		Current	Potential
Very energy efficient - lower running costs			
(92 plus) A			
(81-91) B			
(69-80) C		72	79
(55-68) D			
(39-54) E			
(21-38) F			
(1-20) G			
Not energy efficient - higher running costs			
England & Wales		EU Directive 2002/91/EC	